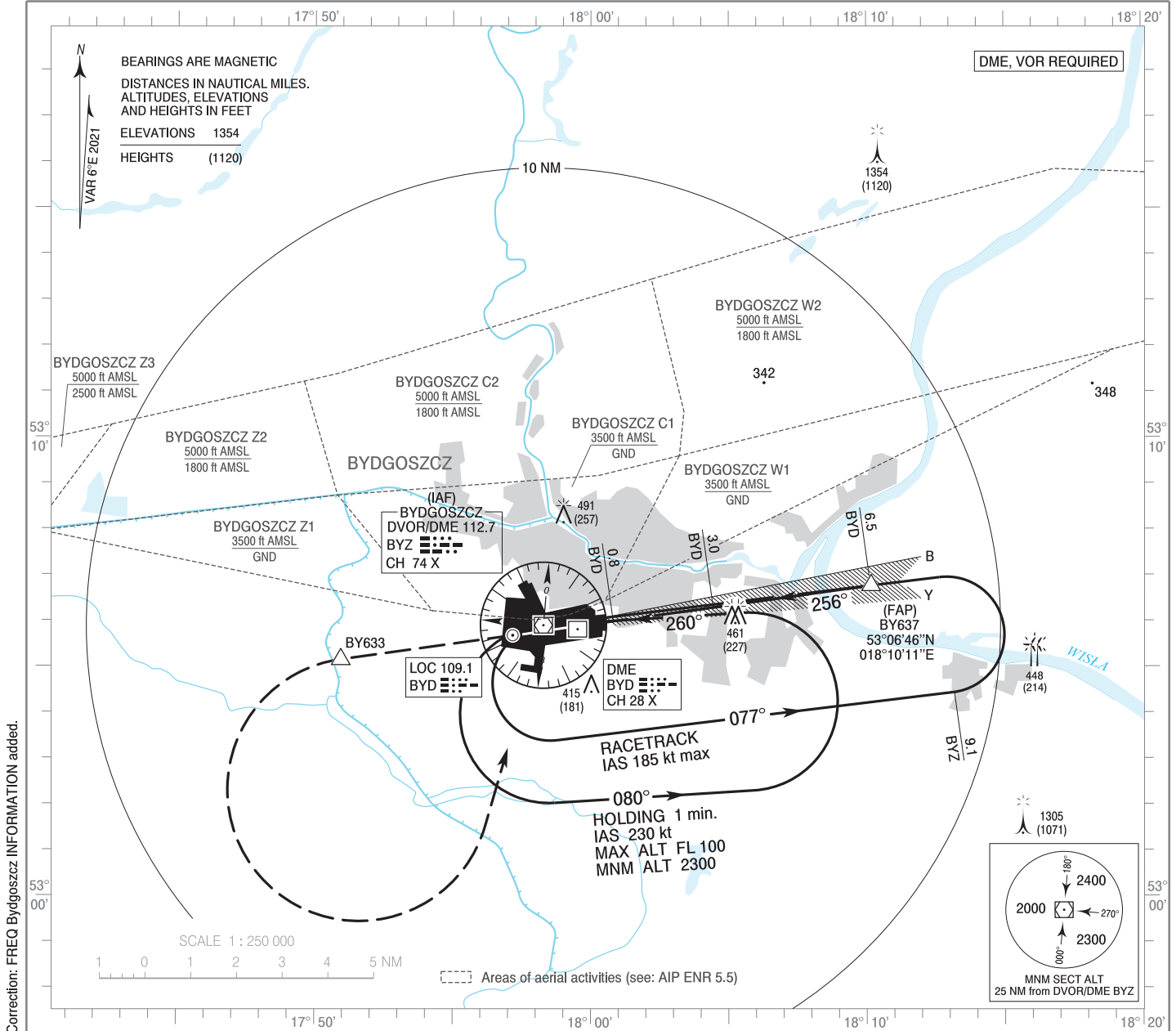


**INSTRUMENT
APPROACH
CHART - ICAO**

AERODROME ELEV 236 ft
THR RWY 26 ELEV 234 ft
HEIGHTS RELATED TO THR RWY 26

Bydgoszcz TOWER 131.005
Bydgoszcz INFORMATION 131.005
ATIS 129.330

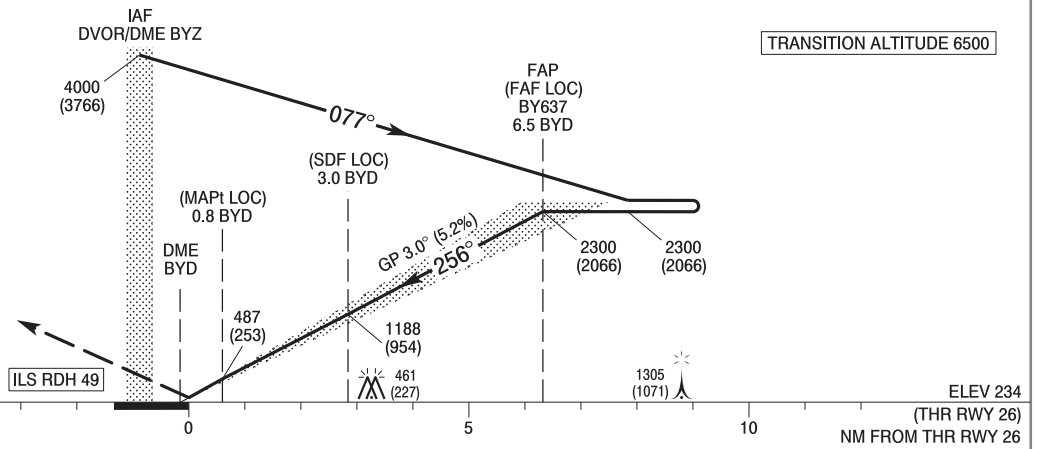
**Bydgoszcz
ILS y or LOC y
RWY 26 (CAT A/B/C/D)**



Correction: FREQ Bydgoszcz INFORMATION added.

MISSED APPROACH

Climb straight ahead to BY633, then turn left to DVOR/DME BYZ and join holding at BYZ climbing to 2300 (2066). Turn limited to 220 kt IAS max.



| OCA (OCH) | | | | | Distance FAF - RW26 6.3 NM | | | | | | | | |
|--------------------------------|--------|---------------|-----------|-----------|----------------------------|---|-----------|-------------|-------------|------------|-----------|--------|--------|
| Cat. of ACFT | Cat. I | A | B | C | D | Speed | kt | 80 | 100 | 120 | 140 | 160 | 180 |
| | | Straight - in | LOC | 434 (200) | 446 (212) | 454 (220) | 465 (231) | Time | min : s | 4 : 46 | 3 : 49 | 3 : 11 | 2 : 43 |
| When stepdown fix not received | | | | | Rate of descent | ft / min | 420 | 530 | 630 | 740 | 840 | 950 | |
| | | 710 (476) | 710 (476) | 710 (476) | 710 (476) | Final approach distance/altitude (height) | | | | | | | |
| Circling (OCH AAL) | | 710 (474) | 790 (554) | 890 (654) | 930 (694) | Distance | | 5 | 4 | 3 | 2 | | |
| | | | | | | Altitude (height) | | 1830 (1596) | 1510 (1276) | 1190 (956) | 870 (636) | | |

**INSTRUMENT
APPROACH
CHART - ICAO**

Bydgoszcz
ILS y or LOC y
RWY 26 (CAT A/B/C/D)

| FIX / POINT | LATITUDE | LONGITUDE | FIX FORMATION | |
|-------------------------------------|--------------|---------------|---------------------------------------|--------------------|
| IAF DVOR/DME BYZ | 53°05'54.3"N | 017°58'18.2"E | | |
| FAP (FAF LOC) BY637 | 53°06'46.1"N | 018°10'10.9"E | 262.02° GEO (256° MAG) LOC BYD | 6.49 NM DME BYD |
| SDF (LOC) | 53°06'17.5"N | 018°04'26.5"E | 262.02° GEO (256° MAG) LOC BYD | 3.00 NM DME BYD |
| MAPt (LOC) | 53°05'59.4"N | 018°00'49.4"E | 262.02° GEO (256° MAG) LOC BYD | 0.80 NM DME BYD |
| BY633 | 53°05'07.6"N | 017°50'36.9"E | 260.51° GEO (255° MAG) DVOR BYZ | 4.70 NM DME BYZ |
| Final approach descent angle: 3.00° | | | | |