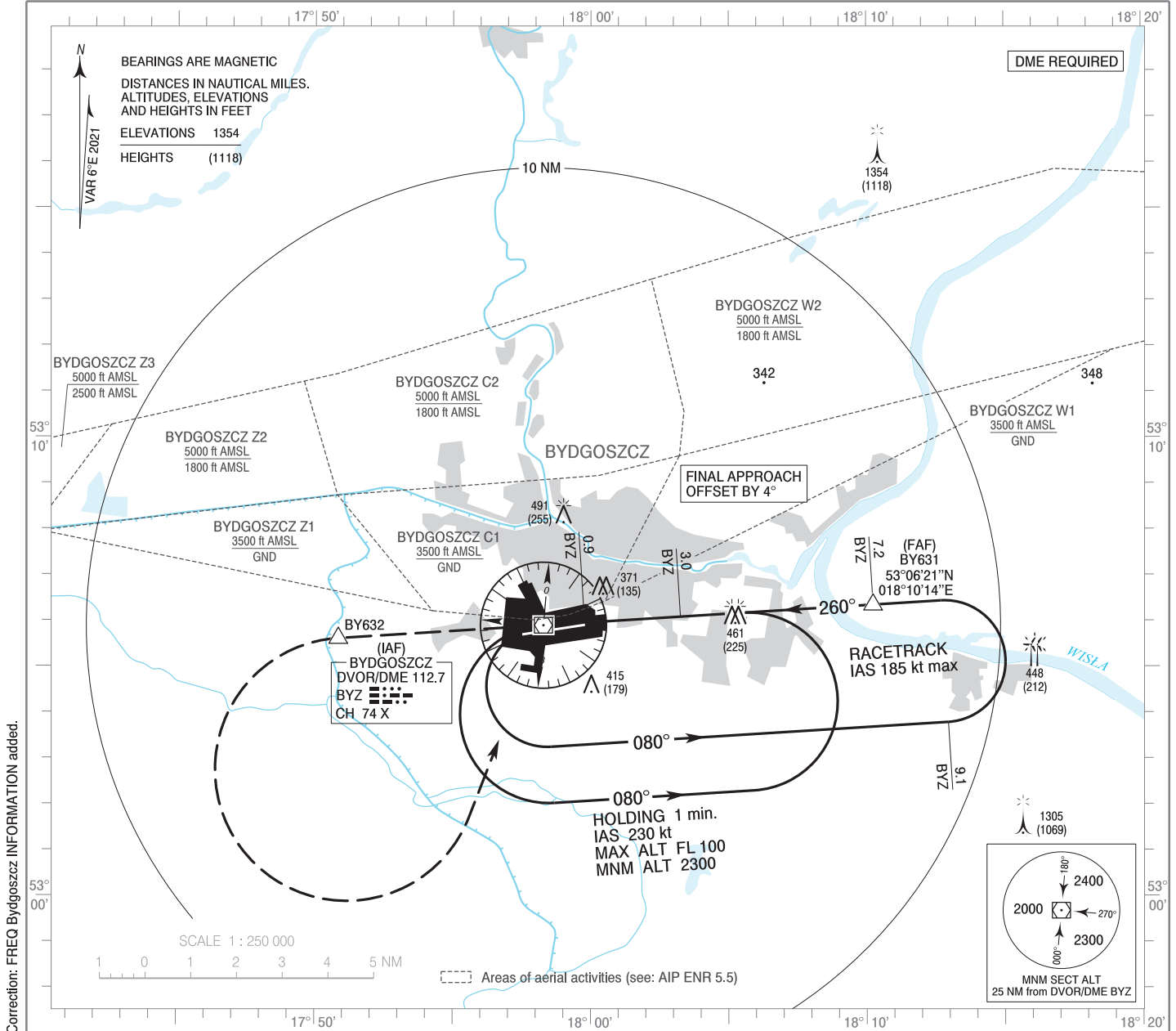


**INSTRUMENT
APPROACH
CHART - ICAO**

AERODROME ELEV 236 ft
THR RWY 26 ELEV 234 ft
HEIGHTS RELATED TO AD ELEV

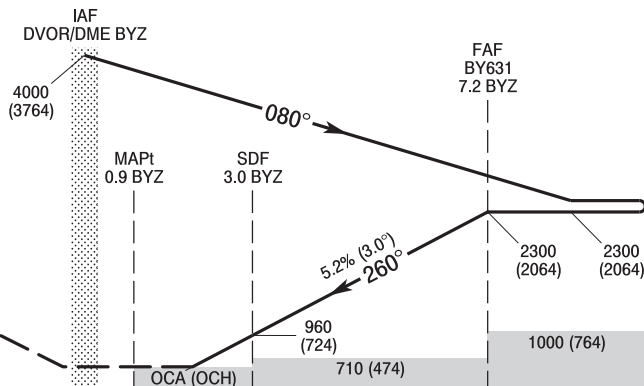
Bydgoszcz TOWER 131.005
Bydgoszcz INFORMATION 131.005
ATIS 129.330

**Bydgoszcz
VOR
RWY 26 (CAT A/B/C/D)**



Correction: FREQ Bydgoszcz INFORMATION added.

MISSED APPROACH
Climb straight ahead to BY632, then turn left to DVOR/DME BYZ and join holding at BYZ climbing 2300 (2064). Turn limited to 220 kt IAS max.



ELEV 236
(AD ELEV)
SCALE 1 : 250 000

TRANSITION ALTITUDE 6500

OCA (OCH)					Distance FAF - RW26 6.3 NM							
Cat. of ACFT	A	B	C	D	Speed	kt	80	100	120	140	160	180
Straight-in	620 (384)	620 (384)	620 (384)	620 (384)	Time	min : s	4 : 45	3 : 48	3 : 10	2 : 43	2 : 23	2 : 07
	When stepdown fix not received				Rate of descent	ft / min	420	530	630	740	850	950
	710 (474)	710 (474)	710 (474)	710 (474)	Final approach distance/altitude (height)							
Circling	710 (474)	790 (554)	890 (654)	930 (694)	Distance	6	5	4	3			
					Altitude (height)	1920 (1684)	1600 (1364)	1280 (1044)	960 (724)			

**INSTRUMENT
APPROACH
CHART - ICAO**

Bydgoszcz
VOR
RWY 26 (CAT A/B/C/D)

FIX / POINT	LATITUDE	LONGITUDE	FIX FORMATION	
IAF DVOR/DME BYZ	53°05'54.3"N	017°58'18.2"E		
FAF BY631	53°06'20.8"N	018°10'14.2"E	086.40° GEO (080° MAG) DVOR BYZ	7.21 NM DME BYZ
SDF	53°06'05.5"N	018°03'16.2"E	086.40° GEO (080° MAG) DVOR BYZ	3.00 NM DME BYZ
MAPt	53°05'57.6"N	017°59'45.6"E	086.40° GEO (080° MAG) DVOR BYZ	0.88 NM DME BYZ
BY632	53°05'37.1"N	017°50'51.2"E	266.40° GEO (260° MAG) DVOR BYZ	4.50 NM DME BYZ
Final approach descent angle: 3.00°				