

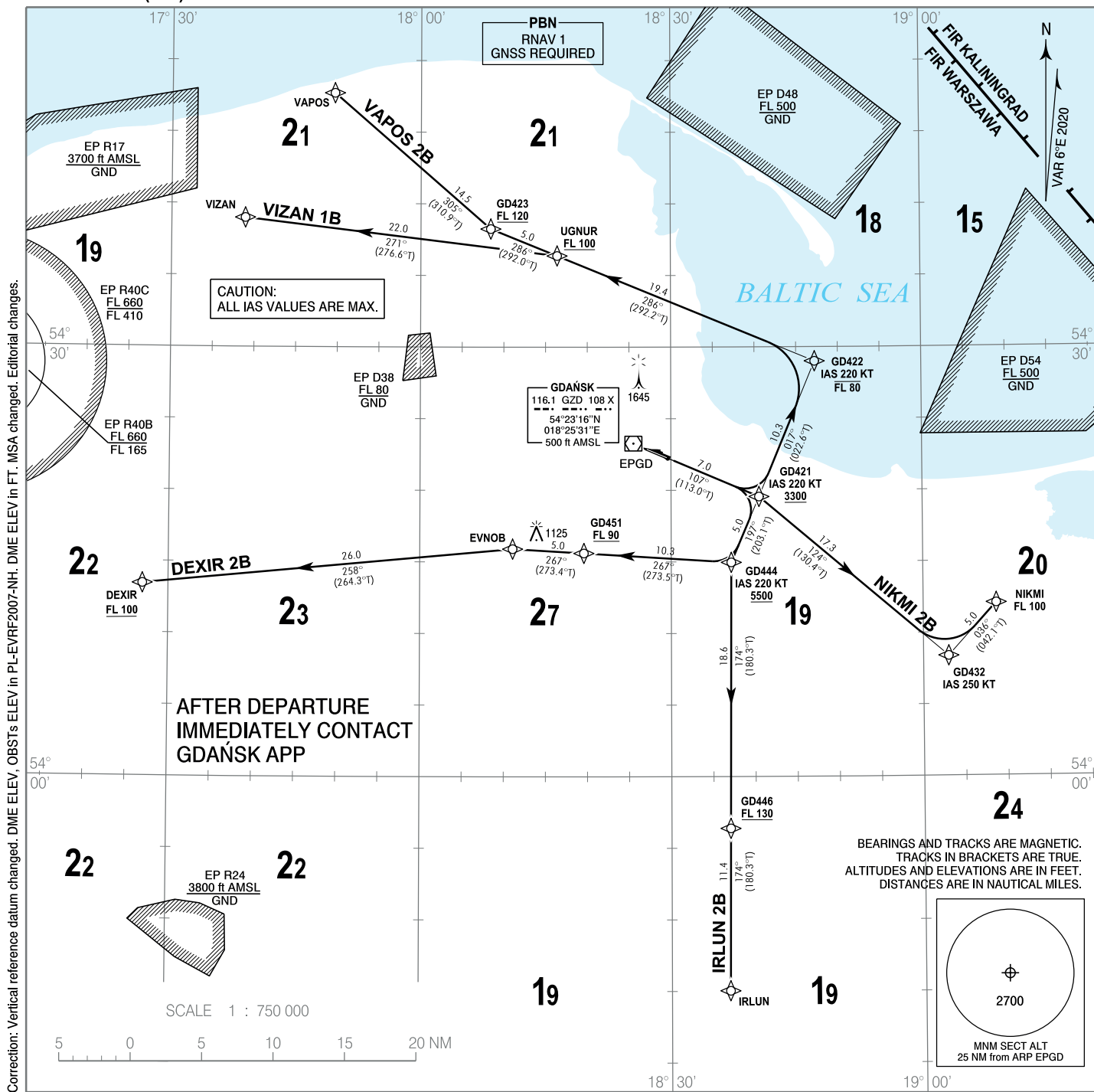
**STANDARD DEPARTURE CHART
INSTRUMENT (SID) - ICAO**

TRANSITION ALTITUDE 6500

Gdańsk APPROACH 127.280, 133.660
Gdańsk GROUND 131.330
Gdańsk TOWER 118.105

**GDAŃSK Lech Walesa
RNAV RWY 11**

DEXIR 2B IRLUN 2B NIKMI 2B
VAPOS 2B VIZAN 1B



Correction: Vertical reference datum changed. DME ELEV, OBST's ELEV in PL-EVRF2007-NH. DME ELEV in FT. MSA changed. Editorial changes.

- RNAV 1 approval required to conduct these procedures without additional restrictions. However it is possible to utilize RNAV 1 trajectories by RNAV 5 only approved a/c. The following restriction apply: a/c equipped with RNAV 5 systems without navigation database, and requiring manual data input are exempted from the utilization of RNAV 1 procedures.
- All a/c which can not follow and utilize RNAV 1 procedures shall advise ATC before start-up. Radar vectoring will be provided, usually along published procedures.
- Expect direct routing/shortcuts by ATC whenever possible (especially during off-peak hours).
- MAX IAS during initial turn as indicated in route description.
- A/c unable to achieve SID profile restrictions must request non-standard departure from ATC before start-up.

RADIO COMMUNICATION FAILURE PROCEDURE

Set the transponder to 7600.

If the climbing clearance did not include a time or geographical limit, maintain for 7 minutes the level and speed cleared by ATC, then continue in accordance with the FPL.
If the a/c was radar vectored, continue for 3 minutes on the assigned heading, then proceed in the most direct manner to the last SID point, climbing to the FPL flight level.

**STANDARD DEPARTURE CHART
INSTRUMENT (SID) - ICAO**

**GDAŃSK Lech Wałesa
RNAV RWY 11
DEXIR 2B IRLUN 2B NIKMI 2B VAPOS 2B VIZAN 1B**

DEXIR 2B

PDG 7% REQUIRED DUE TO OPERATIONAL REASONS UNTIL FL90

SEQUENCE NUMBER	PATH TERMINATOR	WAYPOINT IDENTIFIER	FLY - OVER	COURSE/TRACK °M (°T)	DISTANCE (NM)	TURN DIRECTION	ALTITUDE	SPEED (kt)	NAV SPEC
001	CF	GD421	-	107 (113.0)	6.99	-	+3300 ft	-220	RNAV 1
002	TF	GD444	-	197 (203.1)	5.00	-	+5500 ft	-220	RNAV 1
003	TF	GD451	-	267 (273.5)	10.33	-	+FL90	-	RNAV 1
004	TF	EVNOB	-	267 (273.4)	5.00	-	-	-	RNAV 1
005	TF	DEXIR	-	258 (264.3)	26.01	-	+FL100	-	RNAV 1

IRLUN 2B

PDG 7% REQUIRED DUE TO OPERATIONAL REASONS UP TO GD446

SEQUENCE NUMBER	PATH TERMINATOR	WAYPOINT IDENTIFIER	FLY - OVER	COURSE/TRACK °M (°T)	DISTANCE (NM)	TURN DIRECTION	ALTITUDE	SPEED (kt)	NAV SPEC
001	CF	GD421	-	107 (113.0)	6.99	-	+3300 ft	-220	RNAV 1
002	TF	GD444	-	197 (203.1)	5.00	-	+5500 ft	-	RNAV 1
003	TF	GD446	-	174 (180.3)	18.61	-	+FL130	-	RNAV 1
004	TF	IRLUN	-	174 (180.3)	11.36	-	-	-	RNAV 1

NIKMI 2B

PDG 7% REQUIRED DUE TO OPERATIONAL REASONS UNTIL FL100

SEQUENCE NUMBER	PATH TERMINATOR	WAYPOINT IDENTIFIER	FLY - OVER	COURSE/TRACK °M (°T)	DISTANCE (NM)	TURN DIRECTION	ALTITUDE	SPEED (kt)	NAV SPEC
001	CF	GD421	-	107 (113.0)	6.99	-	+3300 ft	-	RNAV 1
002	TF	GD432	-	124 (130.4)	17.30	-	-	-250	RNAV 1
003	TF	NIKMI	-	036 (042.1)	5.00	-	FL100	-	RNAV 1

VAPOS 2B

PDG 7% REQUIRED DUE TO OPERATIONAL REASONS UP TO GD423

SEQUENCE NUMBER	PATH TERMINATOR	WAYPOINT IDENTIFIER	FLY - OVER	COURSE/TRACK °M (°T)	DISTANCE (NM)	TURN DIRECTION	ALTITUDE	SPEED (kt)	NAV SPEC
001	CF	GD421	-	107 (113.0)	6.99	-	+3300 ft	-220	RNAV 1
002	TF	GD422	-	017 (022.6)	10.25	-	-FL80	-220	RNAV 1
003	TF	UGNUR	-	286 (292.2)	19.42	-	+FL100	-	RNAV 1
004	TF	GD423	-	286 (292.0)	5.00	-	+FL120	-	RNAV 1
005	TF	VAPOS	-	305 (310.9)	14.46	-	-	-	RNAV 1

VIZAN 1B

PDG 7% REQUIRED DUE TO OPERATIONAL REASONS UP TO UGNUR

SEQUENCE NUMBER	PATH TERMINATOR	WAYPOINT IDENTIFIER	FLY - OVER	COURSE/TRACK °M (°T)	DISTANCE (NM)	TURN DIRECTION	ALTITUDE	SPEED (kt)	NAV SPEC
001	CF	GD421	-	107 (113.0)	6.99	-	+3300 ft	-220	RNAV 1
002	TF	GD422	-	017 (022.6)	10.25	-	-FL80	-220	RNAV 1
003	TF	UGNUR	-	286 (292.2)	19.42	-	+FL100	-	RNAV 1
004	TF	VIZAN	-	271 (276.6)	21.96	-	-	-	RNAV 1

WAYPOINT IDENTIFIER	COORDINATES	
DER11	54 22 16.6 N	018 29 30.2 E
DEXIR	54 13 27.0 N	017 26 56.0 E
EVNOB	54 15 53.9 N	018 11 04.7 E
GD421	54 19 32.6 N	018 40 30.5 E
GD422	54 28 59.7 N	018 47 13.4 E
GD423	54 38 14.7 N	018 08 24.9 E
GD432	54 08 22.8 N	019 02 59.9 E
GD444	54 14 57.2 N	018 37 09.9 E
GD446	53 56 22.6 N	018 36 59.4 E
GD451	54 15 36.0 N	018 19 35.1 E
IRLUN	53 45 02.1 N	018 36 53.5 E
NIKMI	54 12 04.7 N	019 08 42.3 E
UGNUR	54 36 22.2 N	018 16 22.8 E
VAPOS	54 47 43.0 N	017 49 36.0 E
VIZAN	54 39 00.0 N	017 38 52.0 E