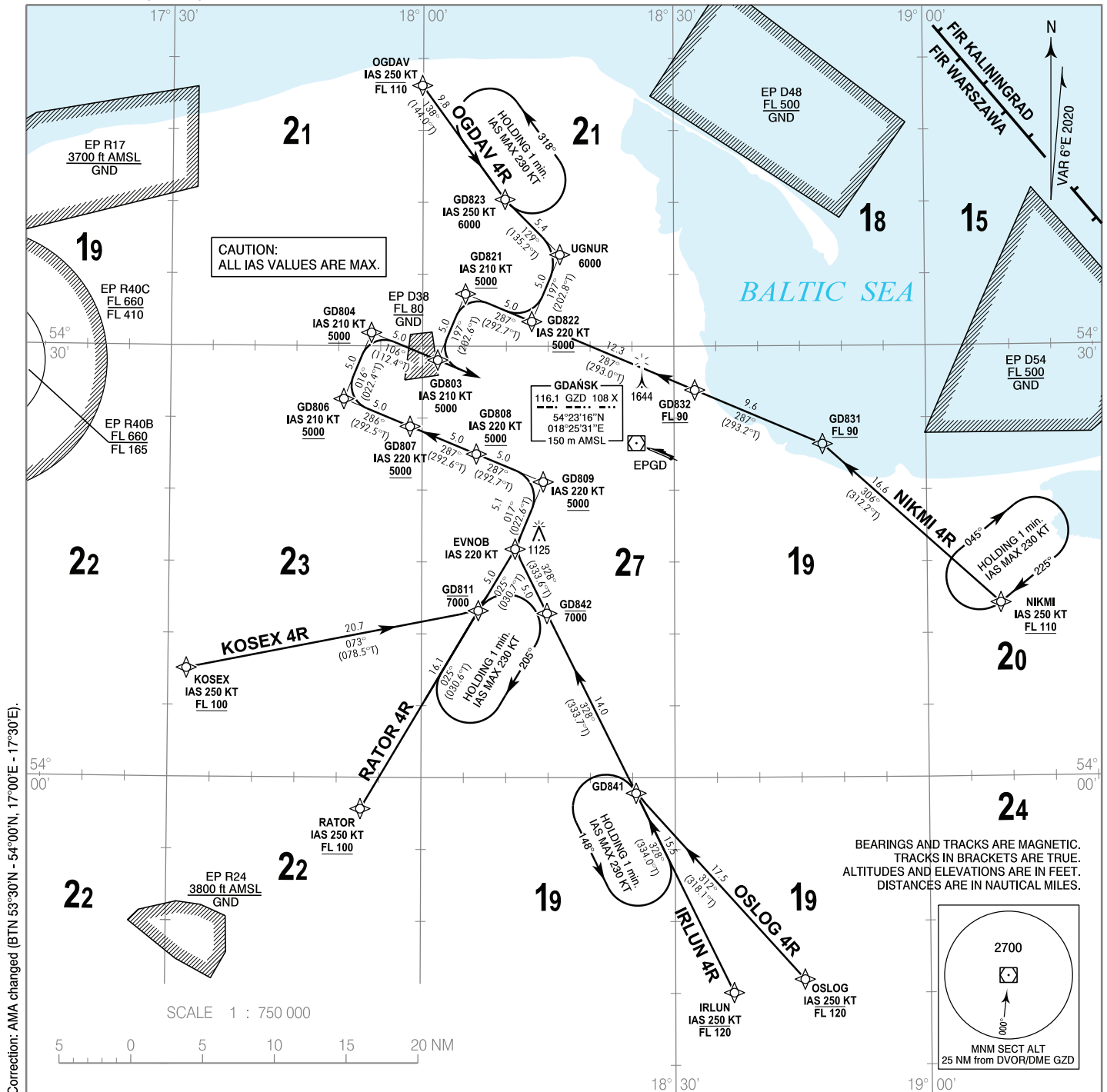


**RNAV 1 (GNSS)  
STANDARD ARRIVAL CHART  
INSTRUMENT (STAR) - ICAO**

TRANSITION ALTITUDE 6500

Gdańsk APPROACH	127.280, 133.660
Gdańsk TOWER	118.105
ATIS	129.630

**GDAŃSK Lech Walesa  
RWY 11**



Correction: AMA changed (BTN 53°30'N - 54°00'N, 17°00'E - 17°30'E).

- RNAV 1 approval required to conduct these procedures without additional restrictions. However it is possible to utilize RNAV 1 trajectories by RNAV 5 only approved a/c. The following restriction apply: a/c equipped with RNAV 5 systems without navigation database, and requiring manual data input are exempted from the utilization of RNAV 1 procedures.
- All a/c which can not follow and utilize RNAV 1 procedures shall advise ATC upon first contact. Radar vectoring will be provided, usually along published procedures.
- Holding patterns as directed by ATC, available for non RNAV 1 approved a/c.
- Vertical planning information: air crews should plan for possible descent clearance in accordance with vertical restrictions specified on chart. Actual descent clearance will be as directed by ATC. If possible, CDA technique should be applied.
- Expect direct routing/shortcuts by ATC whenever possible (especially during off-peak hours). The turn to final approach is usually performed by radar vectors to expedite traffic handling and for separation reasons.

**RADIO COMMUNICATION FAILURE PROCEDURE**

**RNAV 1 APPROVED AIRCRAFT**

- If a STAR was assigned and the flight crew acknowledged it, set the transponder to 7600, continue in accordance with the FPL and follow the assigned STAR, then execute an (ILS or VOR) approach and land. The descent shall be performed after 2 minutes from setting 7600, in accordance with the vertical restrictions specified on the chart.
- If a STAR was assigned, the flight crew acknowledged it and vectoring was initiated, set the transponder to 7600 and continue for 2 minutes (from setting 7600) on the assigned heading and at the last assigned and acknowledged altitude. Thereafter continue directly to the FAF/FAP, execute an (ILS or VOR) approach and land. The descent shall be carried out in accordance with the vertical restrictions specified on the chart.
- If no STAR was assigned, set the transponder to 7600 and continue in accordance with the FPL. Thereafter execute an (ILS or VOR) approach and land. The descent shall be performed in accordance with the vertical restrictions specified on the chart.

**RNAV 1 NOT APPROVED AIRCRAFT**

Set the transponder to 7600. Maintain the last assigned and acknowledged altitude/flight level. Proceed to DVOR/DME GZD. Over GZD descend to 4000 ft AMSL and then proceed to REP UVRIK (IF) VOR RWY 11 (R 287° MAG / D 10.0 NM DVOR/DME GZD) or REP IPLAM (IF) ILS RWY 29 and VOR RWY 29 (R 107° MAG / D 16.0 NM DVOR/DME GZD). Thereafter execute approach and land on the most convenient RWY depending on the wind direction and other conditions (ILS, VOR RWY 29 or VOR RWY 11).

RNAV 1 (GNSS)  
STANDARD ARRIVAL CHART  
INSTRUMENT (STAR) - ICAOGDAŃSK Lech Walesa  
RWY 11

## OGDAV 4R

SEQUENCE NUMBER	PATH TERMINATOR	WAYPOINT IDENTIFIER	COURSE / TRACK °M (°T)	DISTANCE (NM)	ALTITUDE	SPEED (kt)	NAV SPEC
001	IF	OGDAV	-	-	-FL110	-250	RNAV 1
002	TF	GD823	138 (144.0)	9.80	6000 ft	-250	RNAV 1
003	TF	UGNUR	129 (135.2)	5.42	6000 ft	-	RNAV 1
004	TF	GD822	197 (202.8)	5.05	+5000 ft	-220	RNAV 1
005	TF	GD821	287 (292.7)	5.00	+5000 ft	-210	RNAV 1
006	TF	GD803 (IAF)	197 (202.6)	5.00	5000 ft	-210	RNAV 1

## NIKMI 4R

SEQUENCE NUMBER	PATH TERMINATOR	WAYPOINT IDENTIFIER	COURSE / TRACK °M (°T)	DISTANCE (NM)	ALTITUDE	SPEED (kt)	NAV SPEC
001	IF	NIKMI	-	-	+FL110	-250	RNAV 1
002	TF	GD831	306 (312.2)	16.61	+FL90	-	RNAV 1
003	TF	GD832	287 (293.2)	9.64	+FL90	-	RNAV 1
004	TF	GD822	287 (293.0)	12.30	+5000 ft	-	RNAV 1
005	TF	GD821	287 (292.7)	5.00	+5000 ft	-210	RNAV 1
006	TF	GD803 (IAF)	197 (202.6)	5.00	5000 ft	-210	RNAV 1

## OSLOG 4R

SEQUENCE NUMBER	PATH TERMINATOR	WAYPOINT IDENTIFIER	COURSE / TRACK °M (°T)	DISTANCE (NM)	ALTITUDE	SPEED (kt)	NAV SPEC
001	IF	OSLOG	-	-	-FL120	-250	RNAV 1
002	TF	GD841	312 (318.1)	17.51	-	-	RNAV 1
003	TF	GD842	328 (333.7)	13.98	-7000 ft	-	RNAV 1
004	TF	EVNOB	328 (333.6)	5.00	-	-220	RNAV 1
005	TF	GD809	017 (022.6)	5.07	+5000 ft	-220	RNAV 1
006	TF	GD808	287 (292.7)	5.05	+5000 ft	-220	RNAV 1
007	TF	GD807	287 (292.6)	5.00	+5000 ft	-220	RNAV 1
008	TF	GD806	286 (292.5)	5.00	+5000 ft	-210	RNAV 1
009	TF	GD804	016 (022.4)	5.00	+5000 ft	-210	RNAV 1
010	TF	GD803 (IAF)	106 (112.4)	5.00	5000 ft	-210	RNAV 1

### IRLUN 4R

SEQUENCE NUMBER	PATH TERMINATOR	WAYPOINT IDENTIFIER	COURSE / TRACK °M (°T)	DISTANCE (NM)	ALTITUDE	SPEED (kt)	NAV SPEC
001	IF	IRLUN	-	-	-FL120	-250	RNAV 1
002	TF	GD841	328 (334.0)	15.49	-	-	RNAV 1
003	TF	GD842	328 (333.7)	13.98	-7000 ft	-	RNAV 1
004	TF	EVNOB	328 (333.6)	5.00	-	-220	RNAV 1
005	TF	GD809	017 (022.6)	5.07	+5000 ft	-220	RNAV 1
006	TF	GD808	287 (292.7)	5.05	+5000 ft	-220	RNAV 1
007	TF	GD807	287 (292.6)	5.00	+5000 ft	-220	RNAV 1
008	TF	GD806	286 (292.5)	5.00	+5000 ft	-210	RNAV 1
009	TF	GD804	016 (022.4)	5.00	+5000 ft	-210	RNAV 1
010	TF	GD803 (IAF)	106 (112.4)	5.00	5000 ft	-210	RNAV 1

### RATOR 4R

SEQUENCE NUMBER	PATH TERMINATOR	WAYPOINT IDENTIFIER	COURSE / TRACK °M (°T)	DISTANCE (NM)	ALTITUDE	SPEED (kt)	NAV SPEC
001	IF	RATOR	-	-	+FL100	-250	RNAV 1
002	TF	GD811	025 (030.6)	16.06	-7000 ft	-	RNAV 1
003	TF	EVNOB	025 (030.7)	5.00	-	-	RNAV 1
004	TF	GD809	017 (022.6)	5.07	+5000 ft	-220	RNAV 1
005	TF	GD808	287 (292.7)	5.05	+5000 ft	-220	RNAV 1
006	TF	GD807	287 (292.6)	5.00	+5000 ft	-220	RNAV 1
007	TF	GD806	286 (292.5)	5.00	+5000 ft	-210	RNAV 1
008	TF	GD804	016 (022.4)	5.00	+5000 ft	-210	RNAV 1
009	TF	GD803 (IAF)	106 (112.4)	5.00	5000 ft	-210	RNAV 1

### KOSEX 4R

SEQUENCE NUMBER	PATH TERMINATOR	WAYPOINT IDENTIFIER	COURSE / TRACK °M (°T)	DISTANCE (NM)	ALTITUDE	SPEED (kt)	NAV SPEC
001	IF	KOSEX	-	-	+FL100	-250	RNAV 1
002	TF	GD811	073 (078.5)	20.72	-7000 ft	-	RNAV 1
003	TF	EVNOB	025 (030.7)	5.00	-	-	RNAV 1
004	TF	GD809	017 (022.6)	5.07	+5000 ft	-220	RNAV 1
005	TF	GD808	287 (292.7)	5.05	+5000 ft	-220	RNAV 1
006	TF	GD807	287 (292.6)	5.00	+5000 ft	-220	RNAV 1
007	TF	GD806	286 (292.5)	5.00	+5000 ft	-210	RNAV 1
008	TF	GD804	016 (022.4)	5.00	+5000 ft	-210	RNAV 1
009	TF	GD803 (IAF)	106 (112.4)	5.00	5000 ft	-210	RNAV 1

WAYPOINT IDENTIFIER	COORDINATES	
NIKMI	54 12 04.7 N	019 08 42.3 E
KOSEX	54 07 34.4 N	017 32 10.3 E
RATOR	53 57 49.2 N	017 52 49.6 E
OGDAV	54 48 07.0 N	017 59 53.5 E
OSLOG	53 45 56.9 N	018 45 12.6 E
IRLUN	53 45 02.1 N	018 36 53.5 E
EVNOB	54 15 53.9 N	018 11 04.7 E
UGNUR	54 36 22.2 N	018 16 22.8 E
GD803 (IAF)	54 29 02.0 N	018 01 49.2 E
GD804	54 30 56.2 N	017 53 54.2 E
GD806	54 26 19.2 N	017 50 38.4 E
GD807	54 24 25.2 N	017 58 32.7 E
GD808	54 22 30.6 N	018 06 26.9 E
GD809	54 20 34.3 N	018 14 24.7 E
GD811	54 11 36.6 N	018 06 43.3 E
GD821	54 33 38.4 N	018 05 06.8 E
GD822	54 31 43.2 N	018 13 01.7 E
GD823	54 40 12.5 N	018 09 49.5 E
GD831	54 23 11.0 N	018 47 39.5 E
GD832	54 26 57.2 N	018 32 28.4 E
GD841	53 58 55.4 N	018 25 23.9 E
GD842	54 11 25.8 N	018 14 52.1 E