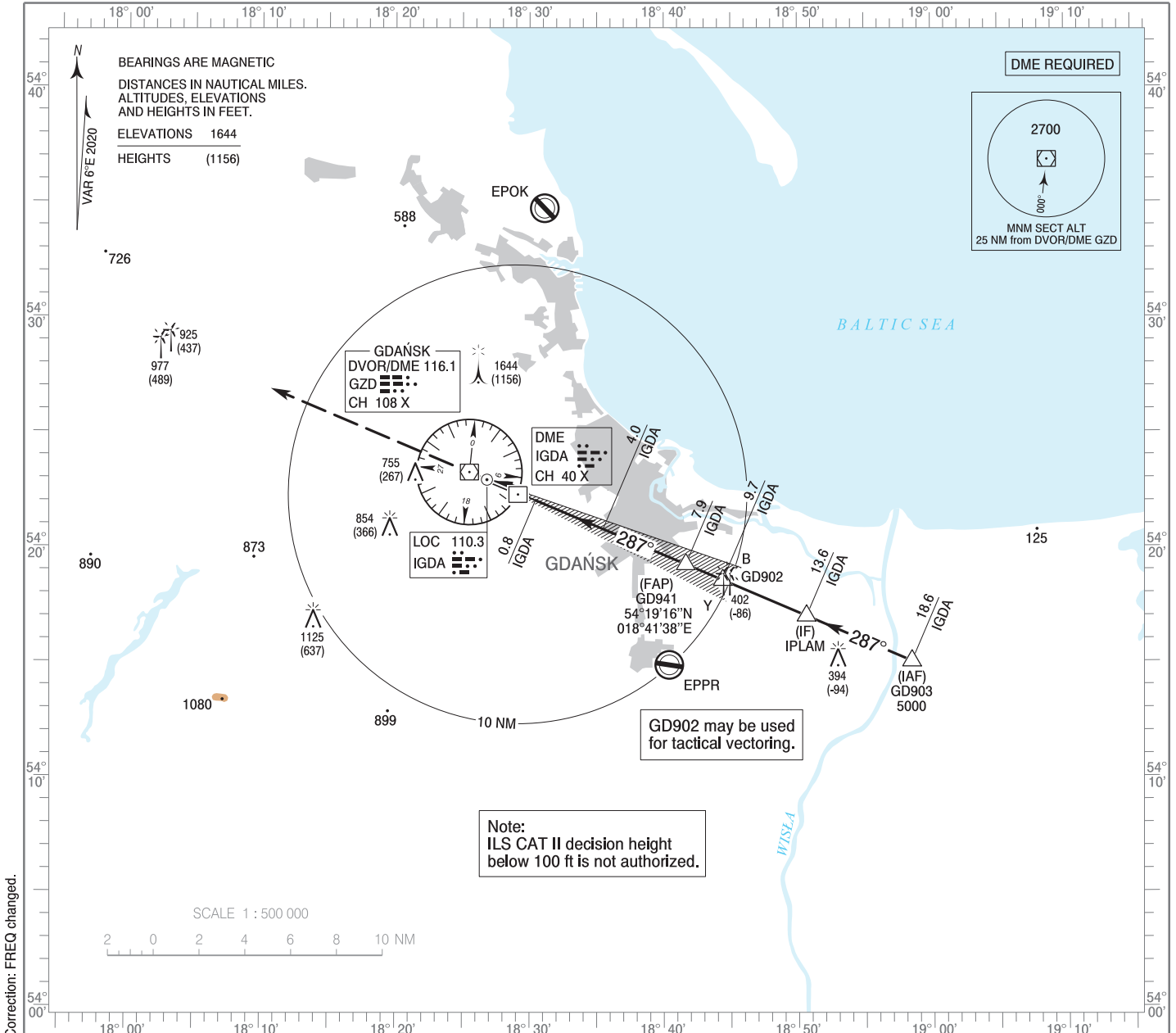


**INSTRUMENT  
APPROACH  
CHART - ICAO**

AERODROME ELEV 489 ft  
THR RWY 29 ELEV 488 ft  
HEIGHTS RELATED TO THR RWY 29

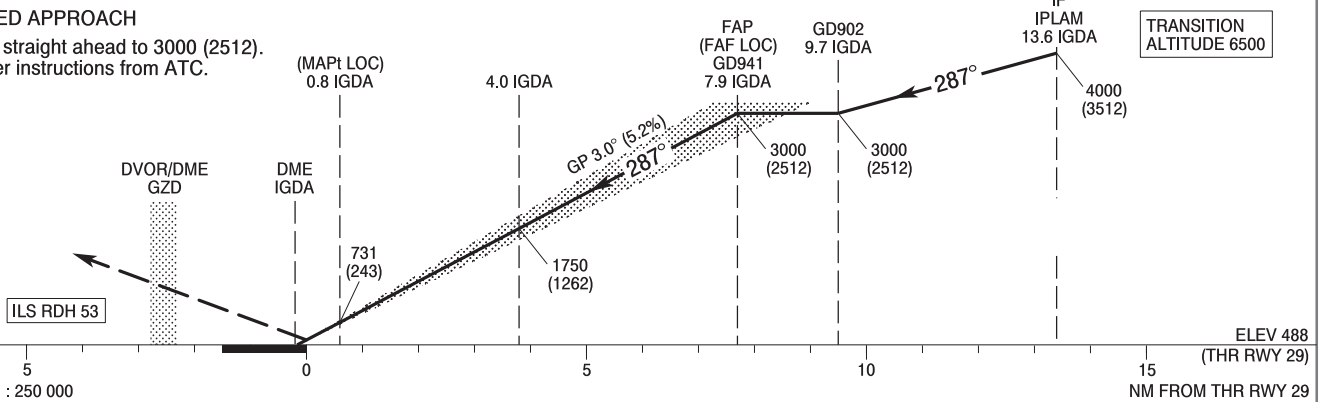
Gdańsk APPROACH 127.280, 133.660  
Gdańsk TOWER 118.105  
ATIS 129.630

**GD AŃSK Lech Wałęsa  
ILS CAT II & III or LOC  
RWY 29 (CAT A/B/C/D)**



**MISSED APPROACH**

Climb straight ahead to 3000 (2512).  
Further instructions from ATC.



OCA (OCH)					Distance FAF - MAPt 7.1 NM								
Cat. of ACFT		A	B	C	D	Speed	kt	80	100	120	140	160	180
		Straight - in	Cat. I	688 (200)	700 (212)	708 (220)	719 (231)	Time	min : s	5 : 48	4 : 38	3 : 52	3 : 19
Cat. II	557 (69)		574 (86)	586 (98)	600 (112)	Rate of descent	ft / min	420	530	630	740	840	950
LOC	830 (342)		830 (342)	830 (342)	830 (342)		Final approach distance/altitude (height)						
ILS CAT IIIb approved.						Distance		7	6	5	4		
Circling (OCH AAL)*		960 (471)	990 (501)	1160 (671)	1250 (761)	Altitude (height)		2710 (2222)	2390 (1902)	2070 (1582)	1750 (1262)		

\*ACFT cat. D circling south of aerodrome only.

INSTRUMENT  
APPROACH  
CHART - ICAOGDAŃSK Lech Walesa  
ILS CAT II & III or LOC  
RWY 29 (CAT A/B/C/D)

FIX / POINT	LATITUDE	LONGITUDE	FIX FORMATION	
IAF GD903	54°15'02.5"N	018°58'26.8"E	293.34° GEO (287° MAG) LOC IGDA	18.64 NM DME IGDA
IF IPLAM	54°17'00.8"N	018°50'37.0"E	293.26° GEO (287° MAG) LOC IGDA	13.64 NM DME IGDA
GD902	54°18'34.5"N	018°44'23.3"E	293.15° GEO (287° MAG) LOC IGDA	9.67 NM DME IGDA
FAP (FAF LOC) GD941	54°19'15.7"N	018°41'38.3"E	293.12° GEO (287° MAG) LOC IGDA	7.92 NM DME IGDA
MAPt (LOC)	54°22'02.7"N	018°30'26.2"E	292.92° GEO (287° MAG) LOC IGDA	0.80 NM DME IGDA
Final approach descent angle: 3.00°				