

AERODROME CHART - ICAO

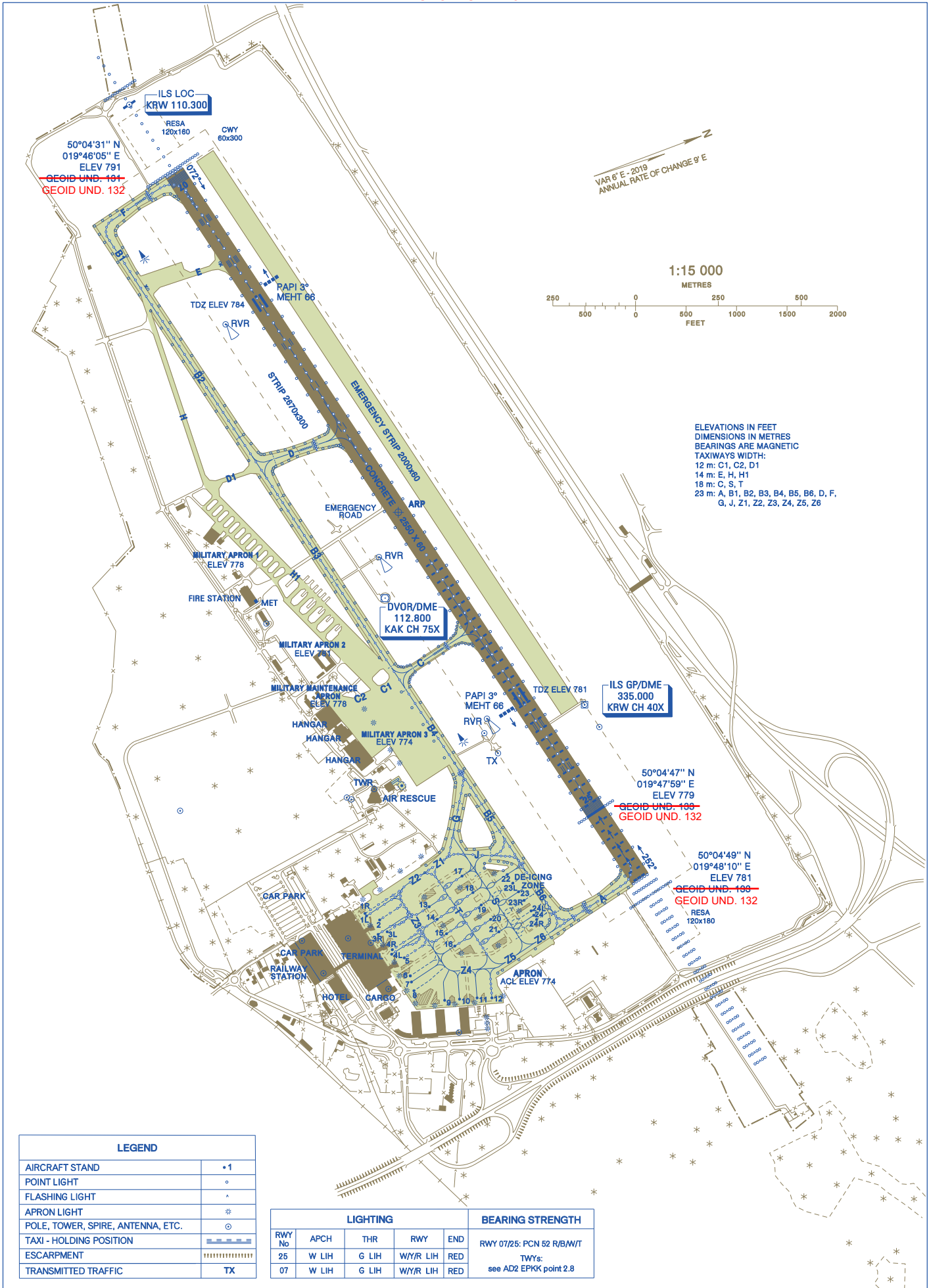
50°04'40" N
019°47'05" E

ELEV 791 ft

~~GEOID UND. 131 ft~~
GEOID UND. 132 ft

Kraków GROUND 118.105
Kraków TOWER 123.255

Kraków - Balice



ELEVATIONS IN FEET
DIMENSIONS IN METRES
BEARINGS ARE MAGNETIC
TAXIWAYS WIDTH:
12 m: C1, C2, D1
14 m: E, H, H1
18 m: C, S, T
23 m: A, B1, B2, B3, B4, B5, B6, D, F,
G, J, Z1, Z2, Z3, Z4, Z5, Z6

LEGEND	
AIRCRAFT STAND	• 1
POINT LIGHT	o
FLASHING LIGHT	*
APRON LIGHT	*
POLE, TOWER, SPIRE, ANTENNA, ETC.	o
TAXI - HOLDING POSITION	—
ESCARPMENT	
TRANSMITTED TRAFFIC	TX

LIGHTING					BEARING STRENGTH	
RWY No	APCH	THR	RWY	END	RWY 07/25: PCN 52 R/B/W/T	
25	W LIH	G LIH	W/YR LIH	RED	TWYs: see AD2 EPKK point 2.8	
07	W LIH	G LIH	W/YR LIH	RED		