

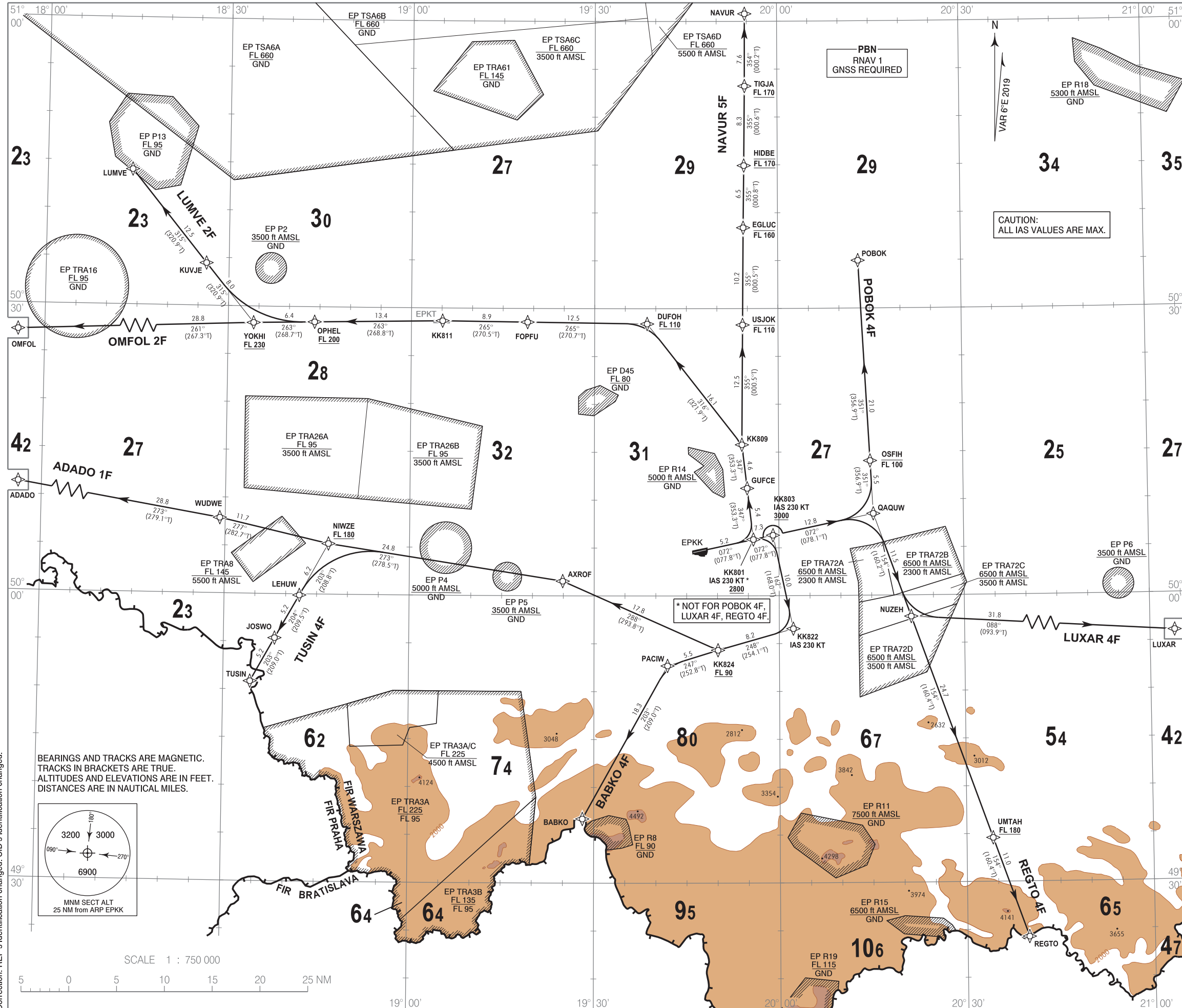
STANDARD DEPARTURE CHART
INSTRUMENT (SID) - ICAO

TRANSITION ALTITUDE 6500

Kraków APPROACH 121.075, 126.530, 126.975
Kraków DELIVERY 121.980
Kraków GROUND 118.105
Kraków TOWER 123.255

Kraków - Balice
RNAV RWY 07

ADADO 1F BABKO 4F LUMVE 2F LUXAR 4F NAVUR 5F
OMFOL 2F POBOK 4F REGTO 4F TUSIN 4F



1. All aircraft which cannot follow and utilize RNAV 1 procedures shall advise ATC before start up. Radar vectoring will be provided.
2. All aircraft unable to achieve SID profile restrictions shall advise ATC before start up.
3. MAX IAS during initial turn as indicated in route description.
4. Initial SID climb to 6000, unless otherwise cleared by ATC.

RADIO COMMUNICATION FAILURE PROCEDURE

1. Set transponder to 7600.
2. Continue on assigned and acknowledged SID. After 3 minutes climb to FPL flight level.
3. If being vectored, continue on assigned heading. After 3 minutes proceed direct to last SID WPT climbing to FPL flight level.

CAUTION:
ALL IAS VALUES ARE MAX.

* NOT FOR POBOK 4F,
LUXAR 4F, REGTO 4F.

Correction: REP's identification changed. SID's identification changed.

**STANDARD DEPARTURE CHART
INSTRUMENT (SID) - ICAO**

**Kraków - Balice
RNAV RWY 07**

ADADO 1F BABKO 4F LUMVE 2F LUXAR 4F NAVUR 5F OMFOL 2F POBOK 4F REGTO 4F TUSIN 4F

ADADO 1F

PDG 7% REQUIRED UP TO AXROF

SEQUENCE NUMBER	PATH TERMINATOR	WAYPOINT IDENTIFIER	COURSE/TRACK °M (°T)	DISTANCE (NM)	ALTITUDE	SPEED (kt)	NAV SPEC
001	CF	KK803	072 (077.8)	7.28	+3000 ft	-230	RNAV 1
002	TF	KK822	162 (168.0)	10.00	-	-230	RNAV 1
003	TF	KK824	248 (254.1)	8.19	+FL090	-	RNAV 1
004	TF	AXROF	288 (293.8)	17.78	-	-	RNAV 1
005	TF	NIWZE	273 (278.5)	24.82	+FL180	-	RNAV 1
006	TF	WUDWE	277 (282.7)	11.69	-	-	RNAV 1
007	TF	ADADO	273 (279.1)	28.83	-	-	RNAV 1

BABKO 4F

PDG 7% REQUIRED UP TO BABKO

SEQUENCE NUMBER	PATH TERMINATOR	WAYPOINT IDENTIFIER	COURSE/TRACK °M (°T)	DISTANCE (NM)	ALTITUDE	SPEED (kt)	NAV SPEC
001	CF	KK803	072 (077.8)	7.28	+3000 ft	-230	RNAV 1
002	TF	KK822	162 (168.0)	10.00	-	-230	RNAV 1
003	TF	KK824	248 (254.1)	8.19	+FL090	-	RNAV 1
004	TF	PACIW	247 (252.8)	5.53	-	-	RNAV 1
005	TF	BABKO	203 (209.0)	18.32	-	-	RNAV 1

LUMVE 2F

PDG 7% REQUIRED UP TO FOPFU

SEQUENCE NUMBER	PATH TERMINATOR	WAYPOINT IDENTIFIER	COURSE/TRACK °M (°T)	DISTANCE (NM)	ALTITUDE	SPEED (kt)	NAV SPEC
001	CF	KK801	072 (077.8)	5.18	+2800 ft	-230	RNAV 1
002	TF	GUFCE	347 (353.3)	5.39	-	-	RNAV 1
003	TF	KK809	347 (353.3)	4.59	-	-	RNAV 1
004	TF	DUFOH	316 (321.9)	16.05	+FL110	-	RNAV 1
005	TF	FOPFU	265 (270.7)	12.50	-	-	RNAV 1
006	TF	KK811	265 (270.5)	8.89	-	-	RNAV 1
007	TF	OPHEL	263 (268.8)	13.39	+FL200	-	RNAV 1
008	TF	YOKHI	263 (268.7)	6.38	+FL230	-	RNAV 1
009	TF	KUVJE	315 (320.9)	7.95	-	-	RNAV 1
010	TF	LUMVE	315 (320.9)	12.48	-	-	RNAV 1

LUXAR 4F

PDG 7% REQUIRED UP TO QAQUW

SEQUENCE NUMBER	PATH TERMINATOR	WAYPOINT IDENTIFIER	COURSE/TRACK °M (°T)	DISTANCE (NM)	ALTITUDE	SPEED (kt)	NAV SPEC
001	CF	KK801	072 (077.8)	5.18	+2800 ft	-	RNAV 1
002	TF	QAQUW	072 (078.1)	12.83	-	-	RNAV 1
003	TF	NUZEH	154 (160.2)	11.45	-	-	RNAV 1
004	TF	LUXAR	088 (093.9)	31.80	-	-	RNAV 1

NAVUR 5F

PDG 7% REQUIRED UP TO EGLUC

SEQUENCE NUMBER	PATH TERMINATOR	WAYPOINT IDENTIFIER	COURSE/TRACK °M (°T)	DISTANCE (NM)	ALTITUDE	SPEED (kt)	NAV SPEC
001	CF	KK801	072 (077.8)	5.18	+2800 ft	-230	RNAV 1
002	TF	GUFCE	347 (353.3)	5.39	-	-	RNAV 1
003	TF	KK809	347 (353.3)	4.59	-	-	RNAV 1
004	TF	USJOK	355 (000.5)	12.53	-FL110	-	RNAV 1
005	TF	EGLUC	355 (000.5)	10.17	-FL160	-	RNAV 1
006	TF	HIDBE	355 (000.8)	6.50	+/-FL170	-	RNAV 1
007	TF	TIGJA	355 (000.6)	8.31	+FL170	-	RNAV 1
008	TF	NAVUR	354 (000.2)	7.56	-	-	RNAV 1

OMFOL 2F

PDG 7% REQUIRED UP TO FOPFU

SEQUENCE NUMBER	PATH TERMINATOR	WAYPOINT IDENTIFIER	COURSE/TRACK °M (°T)	DISTANCE (NM)	ALTITUDE	SPEED (kt)	NAV SPEC
001	CF	KK801	072 (077.8)	5.18	+2800 ft	-230	RNAV 1
002	TF	GUFCE	347 (353.3)	5.39	-	-	RNAV 1
003	TF	KK809	347 (353.3)	4.59	-	-	RNAV 1
004	TF	DUFOH	316 (321.9)	16.05	+FL110	-	RNAV 1
005	TF	FOPFU	265 (270.7)	12.50	-	-	RNAV 1
006	TF	KK811	265 (270.5)	8.89	-	-	RNAV 1
007	TF	OPHEL	263 (268.8)	13.39	+FL200	-	RNAV 1
008	TF	YOKHI	263 (268.7)	6.38	+FL230	-	RNAV 1
009	TF	OMFOL	261 (267.3)	28.78	-	-	RNAV 1

POBOK 4F

PDG 7% REQUIRED UP TO POBOK

SEQUENCE NUMBER	PATH TERMINATOR	WAYPOINT IDENTIFIER	COURSE/TRACK °M (°T)	DISTANCE (NM)	ALTITUDE	SPEED (kt)	NAV SPEC
001	CF	KK801	072 (077.8)	5.18	+2800 ft	-	RNAV 1
002	TF	QAQUW	072 (078.1)	12.83	-	-	RNAV 1
003	TF	OSFIH	351 (356.9)	5.54	-FL100	-	RNAV 1
004	TF	POBOK	351 (356.9)	20.97	-	-	RNAV 1

REGTO 4F

PDG 7% REQUIRED UP TO UMTAH

SEQUENCE NUMBER	PATH TERMINATOR	WAYPOINT IDENTIFIER	COURSE/TRACK °M (°T)	DISTANCE (NM)	ALTITUDE	SPEED (kt)	NAV SPEC
001	CF	KK801	072 (077.8)	5.18	+2800 ft	-	RNAV 1
002	TF	QAQUW	072 (078.1)	12.83	-	-	RNAV 1
003	TF	NUZEH	154 (160.2)	11.45	-	-	RNAV 1
004	TF	UMTAH	154 (160.4)	24.67	+FL180	-	RNAV 1
005	TF	REGTO	154 (160.4)	11.00	-	-	RNAV 1

TUSIN 4F

PDG 7% REQUIRED UP TO AXROF

SEQUENCE NUMBER	PATH TERMINATOR	WAYPOINT IDENTIFIER	COURSE/TRACK °M (°T)	DISTANCE (NM)	ALTITUDE	SPEED (kt)	NAV SPEC
001	CF	KK803	072 (077.8)	7.28	+3000 ft	-230	RNAV 1
002	TF	KK822	162 (168.0)	10.00	-	-230	RNAV 1
003	TF	KK824	248 (254.1)	8.19	+FL090	-	RNAV 1

004	TF	AXROF	288 (293.8)	17.78	-	-	RNAV 1
005	TF	NIWZE	273 (278.5)	24.82	+FL180	-	RNAV 1
006	TF	LEHUW	203 (208.8)	6.18	-	-	RNAV 1
007	TF	JOSWO	204 (209.5)	5.16	-	-	RNAV 1
008	TF	TUSIN	203 (209.0)	5.19	-	-	RNAV 1

WAYPOINT IDENTIFIER	COORDINATES	
DER07	50 04 47.3 N	019 47 58.8 E
ADADO	50 12 34.1 N	017 44 52.6 E
AXROF	50 01 31.9 N	019 24 54.0 E
BABKO	49 36 42.0 N	019 28 10.0 E
DUFOH	50 28 24.2 N	019 38 35.3 E
FOPFU	50 28 34.4 N	019 19 01.4 E
GUFCE	50 11 13.5 N	019 54 52.1 E
HIDBE	50 44 56.1 N	019 54 29.1 E
JOSWO	49 55 22.9 N	018 38 16.0 E
KK801	50 05 52.6 N	019 55 50.9 E
KK803	50 06 19.0 N	019 59 02.3 E
KK809	50 15 46.5 N	019 54 01.9 E
KK811	50 28 39.7 N	019 05 06.4 E
KK822	49 56 32.8 N	020 02 16.4 E
KK824	49 54 19.2 N	019 50 04.2 E
LEHUW	49 59 52.1 N	018 42 12.0 E
EGLUC	50 38 26.6 N	019 54 20.9 E
LUMVE	50 44 07.0 N	018 13 56.0 E
LUXAR	49 55 48.0 N	021 10 31.0 E
NAVUR	51 00 47.0 N	019 54 40.0 E
NIWZE	50 05 16.8 N	018 46 49.7 E
NUZEH	49 57 46.6 N	020 21 23.1 E
OPHEL	50 28 24.8 N	018 44 09.0 E
OMFOL	50 27 04.0 N	017 49 10.0 E
OSFIH	50 14 03.8 N	020 14 53.7 E
KUVJE	50 34 26.4 N	018 26 18.0 E
PACIW	49 52 41.5 N	019 41 53.9 E
POBOK	50 34 59.0 N	020 13 08.0 E
QAQUW	50 08 32.4 N	020 15 21.3 E
REGTO	49 24 13.0 N	020 39 53.0 E
TIGJA	50 53 14.1 N	019 54 37.6 E
TUSIN	49 50 51.0 N	018 34 22.2 E
UMTAH	49 34 34.4 N	020 34 13.4 E
USJOK	50 28 17.3 N	019 54 12.3 E
WUDWE	50 07 52.4 N	018 29 07.4 E
YOKHI	50 28 16.4 N	018 34 09.5 E