

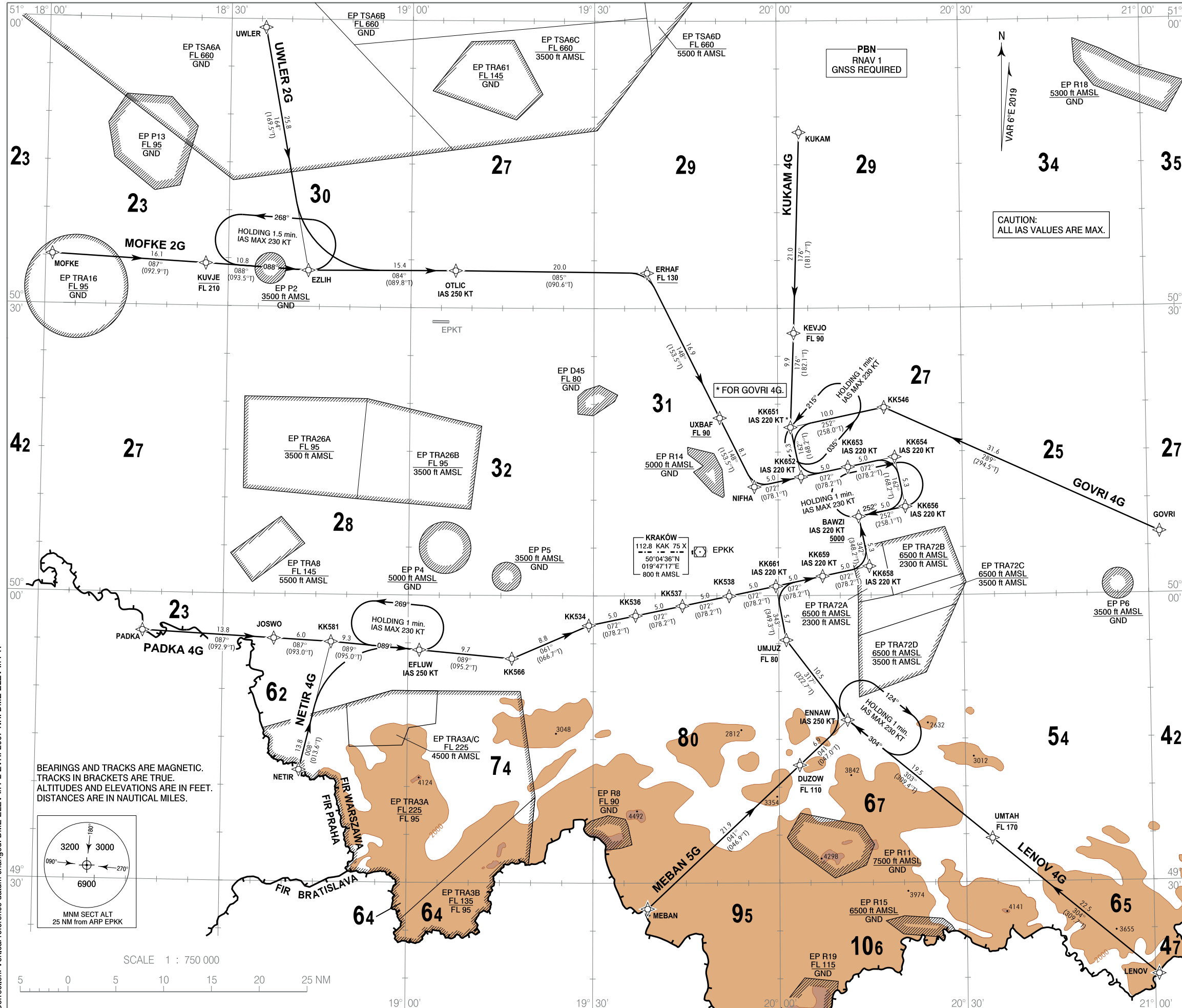
STANDARD ARRIVAL CHART
INSTRUMENT (STAR) - ICAO

TRANSITION ALTITUDE 6500

Kraków APPROACH 121.075, 126.530, 126.975
Kraków GROUND 118.105
Kraków TOWER 123.255

Kraków - Balice
RNAV RWY 25

GOVRI 4G KUKAM 4G LENOV 4G MEBAN 5G
MOFKE 2G NETIR 4G PADKA 4G UWLER 2G



1. All aircraft which cannot follow and utilize RNAV 1 procedures shall advise Kraków APP upon first contact. Radar vectoring will be provided.
2. Type of expected approach will be broadcasted by ATIS. Crews willing to perform other approach type shall advise Kraków APP upon first contact.
3. Holding patterns as directed by ATC, available for non RNAV 1 approved aircraft.
4. During peak hours expect radar vectoring at downwind position to expedite traffic handling and for separation reasons.
5. For descent planning expect base turn abeam 10-15 NM final.

RADIO COMMUNICATION FAILURE PROCEDURE

1. Set transponder to 7600.
2. Continue with assigned STAR or on previously assigned heading. Descend to last cleared and acknowledged level.
3. After 3 minutes proceed direct to KAK DVOR/DME and hold. Descend in holding pattern. Execute VOR approach to preferred runway and land.

CAUTION:
ALL IAS VALUES ARE MAX.

Correction: Vertical reference datum changed. DME ELEV in PL-EVRF2007-NH. DME ELEV in FT.

**STANDARD ARRIVAL CHART
INSTRUMENT (STAR) - ICAO**

**Kraków - Balice
RNAV RWY 25**

GOVRI 4G KUKAM 4G LENOV 4G MEBAN 5G MOFKE 2G NETIR 4G PADKA 4G UWLER 2G

GOVRI 4G

SEQUENCE NUMBER	PATH TERMINATOR	WAYPOINT IDENTIFIER	COURSE / TRACK °M (°T)	DISTANCE (NM)	ALTITUDE	SPEED (kt)	NAV SPEC
001	IF	GOVRI	-	-	-	-	RNAV 1
002	TF	KK546	289 (294.5)	31.55	-	-	RNAV 1
003	TF	KK651	252 (258.0)	9.98	-	-220	RNAV 1
004	TF	KK652	162 (168.2)	5.30	-	-220	RNAV 1
005	TF	KK653	072 (078.2)	5.00	-	-220	RNAV 1
006	TF	KK654	072 (078.2)	5.00	-	-220	RNAV 1
007	TF	KK656	162 (168.2)	5.30	-	-220	RNAV 1
008	TF	BAWZI	252 (258.1)	5.00	+5000 ft	-220	RNAV 1

KUKAM 4G

SEQUENCE NUMBER	PATH TERMINATOR	WAYPOINT IDENTIFIER	COURSE / TRACK °M (°T)	DISTANCE (NM)	ALTITUDE	SPEED (kt)	NAV SPEC
001	IF	KUKAM	-	-	-	-	RNAV 1
002	TF	KEVJO	176 (181.7)	21.00	-FL090	-	RNAV 1
003	TF	KK651	176 (182.1)	9.85	-	-	RNAV 1
004	TF	KK652	162 (168.2)	5.30	-	-220	RNAV 1
005	TF	KK653	072 (078.2)	5.00	-	-220	RNAV 1
006	TF	KK654	072 (078.2)	5.00	-	-220	RNAV 1
007	TF	KK656	162 (168.2)	5.30	-	-220	RNAV 1
008	TF	BAWZI	252 (258.1)	5.00	+5000 ft	-220	RNAV 1

LENOV 4G

SEQUENCE NUMBER	PATH TERMINATOR	WAYPOINT IDENTIFIER	COURSE / TRACK °M (°T)	DISTANCE (NM)	ALTITUDE	SPEED (kt)	NAV SPEC
001	IF	LENOV	-	-	-	-	RNAV 1
002	TF	UMTAH	304 (309.7)	22.45	-FL170	-	RNAV 1
003	TF	ENNAW	303 (309.4)	19.52	-	-250	RNAV 1
004	TF	UMJUJ	317 (322.7)	10.52	-FL080	-	RNAV 1
005	TF	KK661	343 (349.3)	5.74	-	-220	RNAV 1
006	TF	KK659	072 (078.2)	5.00	-	-220	RNAV 1
007	TF	KK658	072 (078.2)	5.00	-	-220	RNAV 1
008	TF	BAWZI	342 (348.2)	5.30	+5000 ft	-220	RNAV 1

MEBAN 5G

SEQUENCE NUMBER	PATH TERMINATOR	WAYPOINT IDENTIFIER	COURSE / TRACK °M (°T)	DISTANCE (NM)	ALTITUDE	SPEED (kt)	NAV SPEC
001	IF	MEBAN	-	-	-	-	RNAV 1
002	TF	DUZOW	041 (046.9)	21.90	-FL110	-	RNAV 1
003	TF	ENNAW	041 (047.0)	6.89	-	-250	RNAV 1
004	TF	UMJUJZ	317 (322.7)	10.52	-FL080	-	RNAV 1
005	TF	KK661	343 (349.3)	5.74	-	-220	RNAV 1
006	TF	KK659	072 (078.2)	5.00	-	-220	RNAV 1
007	TF	KK658	072 (078.2)	5.00	-	-220	RNAV 1
008	TF	BAWZI	342 (348.2)	5.30	+5000 ft	-220	RNAV 1

MOFKE 2G

SEQUENCE NUMBER	PATH TERMINATOR	WAYPOINT IDENTIFIER	COURSE / TRACK °M (°T)	DISTANCE (NM)	ALTITUDE	SPEED (kt)	NAV SPEC
001	IF	MOFKE	-	-	-	-	RNAV 1
002	TF	KUVJE	087 (092.9)	16.08	-FL210	-	RNAV 1
003	TF	EZLIH	088 (093.5)	10.76	-	-	RNAV 1
004	TF	OTLIC	084 (089.8)	15.41	-	-250	RNAV 1
005	TF	ERHAF	085 (090.6)	20.00	+FL130	-	RNAV 1
006	TF	UXBAF	148 (153.5)	16.93	+FL090	-	RNAV 1
007	TF	NIFHA	148 (153.5)	8.07	-	-	RNAV 1
008	TF	KK652	072 (078.1)	5.00	-	-220	RNAV 1
009	TF	KK653	072 (078.2)	5.00	-	-220	RNAV 1
010	TF	KK654	072 (078.2)	5.00	-	-220	RNAV 1
011	TF	KK656	162 (168.2)	5.30	-	-220	RNAV 1
012	TF	BAWZI	252 (258.1)	5.00	+5000 ft	-220	RNAV 1

NETIR 4G

SEQUENCE NUMBER	PATH TERMINATOR	WAYPOINT IDENTIFIER	COURSE / TRACK °M (°T)	DISTANCE (NM)	ALTITUDE	SPEED (kt)	NAV SPEC
001	IF	NETIR	-	-	-	-	RNAV 1
002	TF	KK581	008 (013.6)	13.79	-	-	RNAV 1
003	TF	EFLUW	089 (095.0)	9.28	-	-250	RNAV 1
004	TF	KK566	089 (095.2)	9.73	-	-	RNAV 1
005	TF	KK534	061 (066.7)	8.76	-	-	RNAV 1
006	TF	KK536	072 (078.2)	5.00	-	-	RNAV 1
007	TF	KK537	072 (078.2)	5.00	-	-	RNAV 1
008	TF	KK538	072 (078.2)	5.00	-	-	RNAV 1
009	TF	KK661	072 (078.2)	5.00	-	-220	RNAV 1
010	TF	KK659	072 (078.2)	5.00	-	-220	RNAV 1
011	TF	KK658	072 (078.2)	5.00	-	-220	RNAV 1
012	TF	BAWZI	342 (348.2)	5.30	+5000ft	-220	RNAV 1

PADKA 4G

SEQUENCE NUMBER	PATH TERMINATOR	WAYPOINT IDENTIFIER	COURSE / TRACK °M (°T)	DISTANCE (NM)	ALTITUDE	SPEED (kt)	NAV SPEC
001	IF	PADKA	-	-	-	-	RNAV 1
002	TF	JOSWO	087 (092.9)	13.76	-	-	RNAV 1
003	TF	KK581	087 (093.0)	6.00	-	-	RNAV 1
004	TF	EFLUW	089 (095.0)	9.28	-	-250	RNAV 1
005	TF	KK566	089 (095.2)	9.73	-	-	RNAV 1
006	TF	KK534	061 (066.7)	8.76	-	-	RNAV 1
007	TF	KK536	072 (078.2)	5.00	-	-	RNAV 1
008	TF	KK537	072 (078.2)	5.00	-	-	RNAV 1
009	TF	KK538	072 (078.2)	5.00	-	-	RNAV 1
010	TF	KK661	072 (078.2)	5.00	-	-220	RNAV 1
011	TF	KK659	072 (078.2)	5.00	-	-220	RNAV 1
012	TF	KK658	072 (078.2)	5.00	-	-220	RNAV 1
013	TF	BAWZI	342 (348.2)	5.30	+5000ft	-220	RNAV 1

UWLER 2G

SEQUENCE NUMBER	PATH TERMINATOR	WAYPOINT IDENTIFIER	COURSE / TRACK °M (°T)	DISTANCE (NM)	ALTITUDE	SPEED (kt)	NAV SPEC
001	IF	UWLER	-	-	-	-	RNAV 1
002	TF	EZLIH	164 (169.5)	25.77	-	-	RNAV 1
003	TF	OTLIC	084 (089.8)	15.41	-	-250	RNAV 1
004	TF	ERHAF	085 (090.6)	20.00	+FL130	-	RNAV 1
005	TF	UXBAF	148 (153.5)	16.93	+FL090	-	RNAV 1
006	TF	NIFHA	148 (153.5)	8.07	-	-	RNAV 1
007	TF	KK652	072 (078.1)	5.00	-	-220	RNAV 1
008	TF	KK653	072 (078.2)	5.00	-	-220	RNAV 1
009	TF	KK654	072 (078.2)	5.00	-	-220	RNAV 1
010	TF	KK656	162 (168.2)	5.30	-	-220	RNAV 1
011	TF	BAWZI	252 (258.1)	5.00	+5000ft	-220	RNAV 1

WAYPOINT IDENTIFIER	COORDINATES	
BAWZI	50 08 13.7 N	020 13 04.5 E
EFLUW	49 54 16.7 N	019 01 49.6 E
ERHAF	50 33 41.9 N	019 38 40.7 E
ENNAW	49 46 59.9 N	020 11 04.1 E
EZLIH	50 33 48.5 N	018 43 08.4 E
GOVRI	50 06 25.3 N	021 01 54.0 E
DUZOW	49 42 17.9 N	020 03 18.5 E
JOSWO	49 55 22.9 N	018 38 16.0 E
KEVJO	50 27 23.8 N	020 02 38.3 E
KK534	49 56 53.4 N	019 29 15.3 E
KK536	49 57 55.0 N	019 36 49.9 E
KK537	49 58 56.5 N	019 44 24.7 E
KK538	49 59 58.1 N	019 51 59.7 E
KK546	50 19 37.1 N	020 17 18.1 E
KK651	50 17 34.0 N	020 02 03.8 E

NIFHA	50 11 21.5 N	019 56 08.3 E
KK566	49 53 24.6 N	019 16 48.7 E
KK652	50 12 23.1 N	020 03 45.2 E
KK653	50 13 24.6 N	020 11 22.3 E
KK654	50 14 26.2 N	020 18 59.6 E
KK656	50 09 15.3 N	020 20 40.9 E
KK661	50 00 59.6 N	019 59 34.8 E
KK659	50 02 01.2 N	020 07 10.1 E
KK658	50 03 02.7 N	020 14 45.6 E
KK581	49 55 04.6 N	018 47 31.5 E
KUKAM	50 48 22.0 N	020 03 38.0 E
LENOV	49 20 11.0 N	021 00 37.0 E
MEBAN	49 27 18.0 N	019 38 48.0 E
MOFKE	50 35 12.0 N	018 01 06.0 E
NETIR	49 41 40.8 N	018 42 32.4 E
OTLIC	50 33 53.8 N	019 07 18.8 E
KUVJE	50 34 26.4 N	018 26 18.0 E
PADKA	49 56 02.0 N	018 16 59.8 E
UMJUZ	49 55 21.8 N	020 01 13.7 E
UMTAH	49 34 34.4 N	020 34 13.4 E
UWLER	50 59 07.0 N	018 35 41.0 E
UXBAF	50 18 34.0 N	019 50 31.2 E