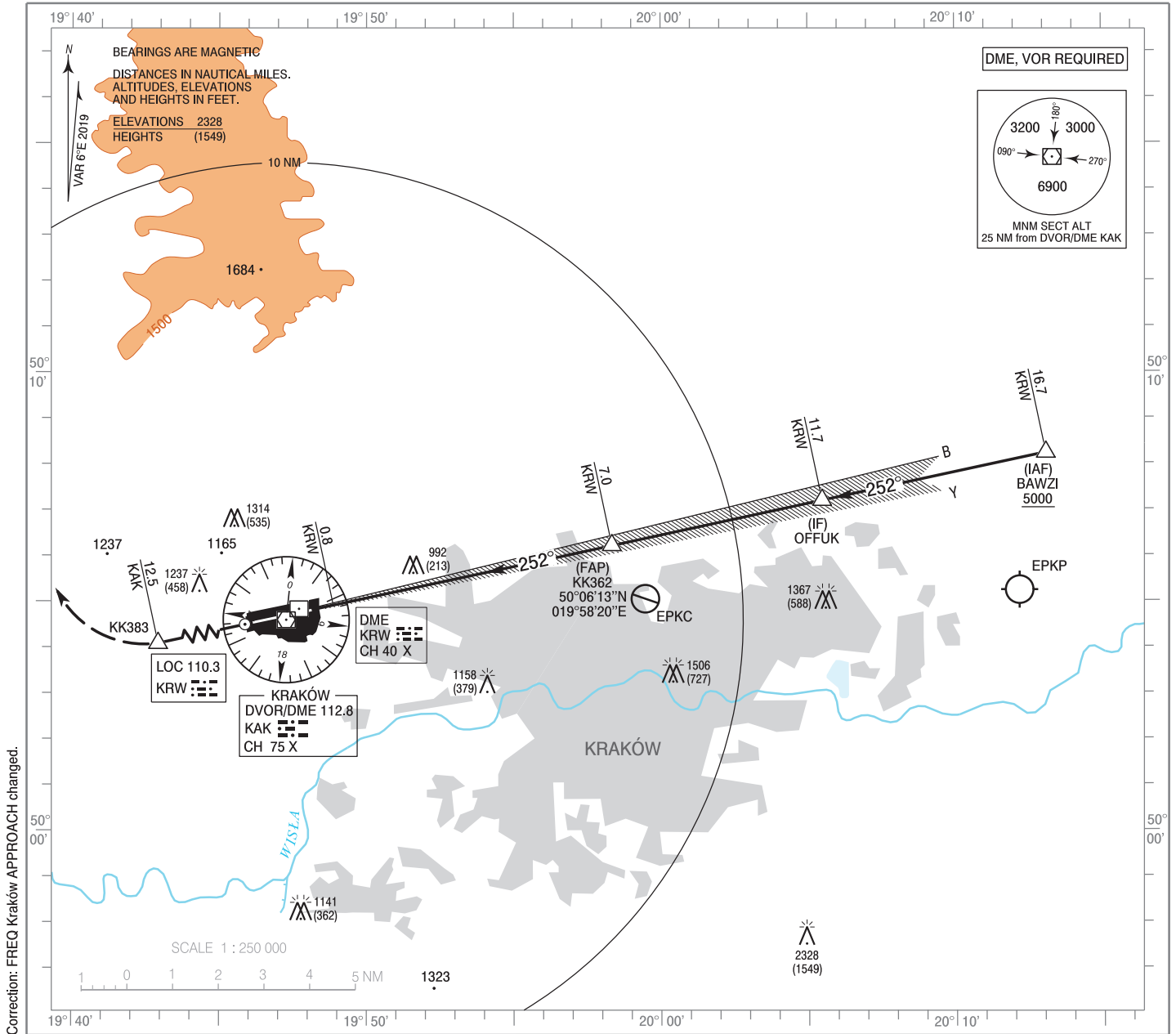


**INSTRUMENT  
APPROACH  
CHART - ICAO**

AERODROME ELEV 791 ft  
THR RWY 25 ELEV 779 ft  
HEIGHTS RELATED TO THR RWY 25

Kraków APPROACH 121.075, 126.530, 126.975  
Kraków TOWER 123.255  
ATIS 112.800, 126.130

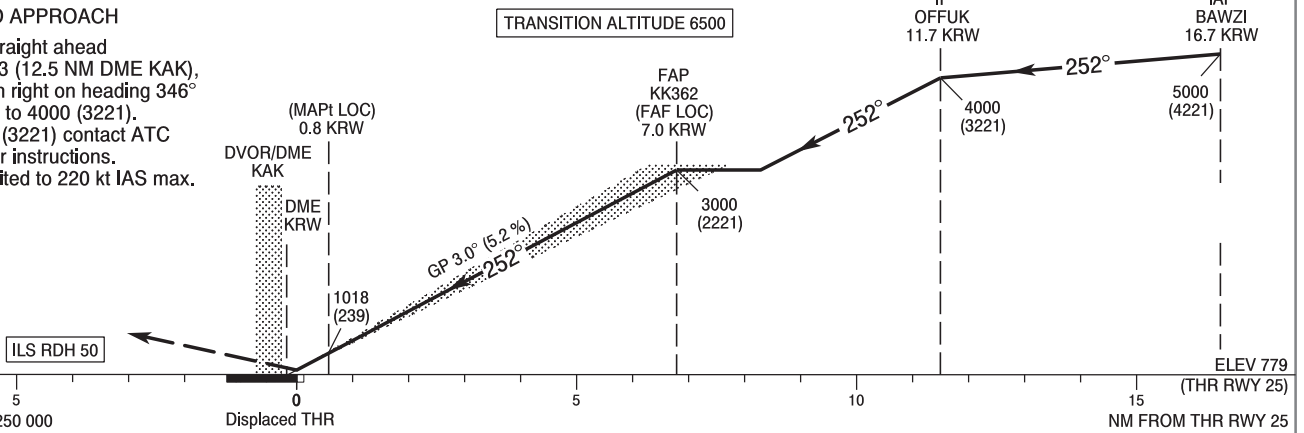
**Kraków - Balice  
ILS or LOC  
RWY 25 (CAT A/B/C/D)**



Correction: FREQ Kraków APPROACH changed.

**MISSED APPROACH**

Climb straight ahead to KK383 (12.5 NM DME KAK), then turn right on heading 346° climbing to 4000 (3221). At 4000 (3221) contact ATC for further instructions. Turn limited to 220 kt IAS max.



OCA (OCH)					Distance FAF - MAPt 6.2 NM								
Cat. of ACFT	A	B	C	D	Speed	kt	80	100	120	140	160	180	
Straight - in	Cat. I	981 (202)	993 (214)	1001 (222)	1012 (233)	Time	min : s	4 : 40	3 : 44	3 : 07	2 : 40	2 : 20	2 : 05
	LOC	1260 (481)	1260 (481)	1260 (481)	1260 (481)	Rate of descent	ft / min	420	530	630	740	840	950
Circling (OCH AAL)*					Final approach distance/altitude (height)								
					Distance	6	5	4	3	2			
					Altitude (height)	2680 (1901)	2360 (1581)	2040 (1261)	1730 (951)	1410 (631)			

**INSTRUMENT  
APPROACH  
CHART - ICAO**

**Kraków - Balice  
ILS or LOC  
RWY 25 (CAT A/B/C/D)**

FIX / POINT	LATITUDE	LONGITUDE	FIX FORMATION	
IAF BAWZI	50°08'13.7"N	020°13'04.5"E	257.78° GEO (252° MAG) LOC KRW	16.68 NM DME KRW
IF OFFUK	50°07'11.8"N	020°05'28.3"E	257.78° GEO (252° MAG) LOC KRW	11.68 NM DME KRW
FAP KK362 (FAF LOC)	50°06'13.2"N	019°58'19.8"E	257.76° GEO (252° MAG) LOC KRW	6.98 NM DME KRW
MAPt (LOC)	50°04'54.7"N	019°48'52.6"E	257.76° GEO (252° MAG) LOC KRW	0.75 NM DME KRW
KK383	50°02'01.2"N	019°28'18.1"E	258.23° GEO (252° MAG) DVOR KAK	12.50 NM DME KAK
Final approach descent angle: 3.00°				