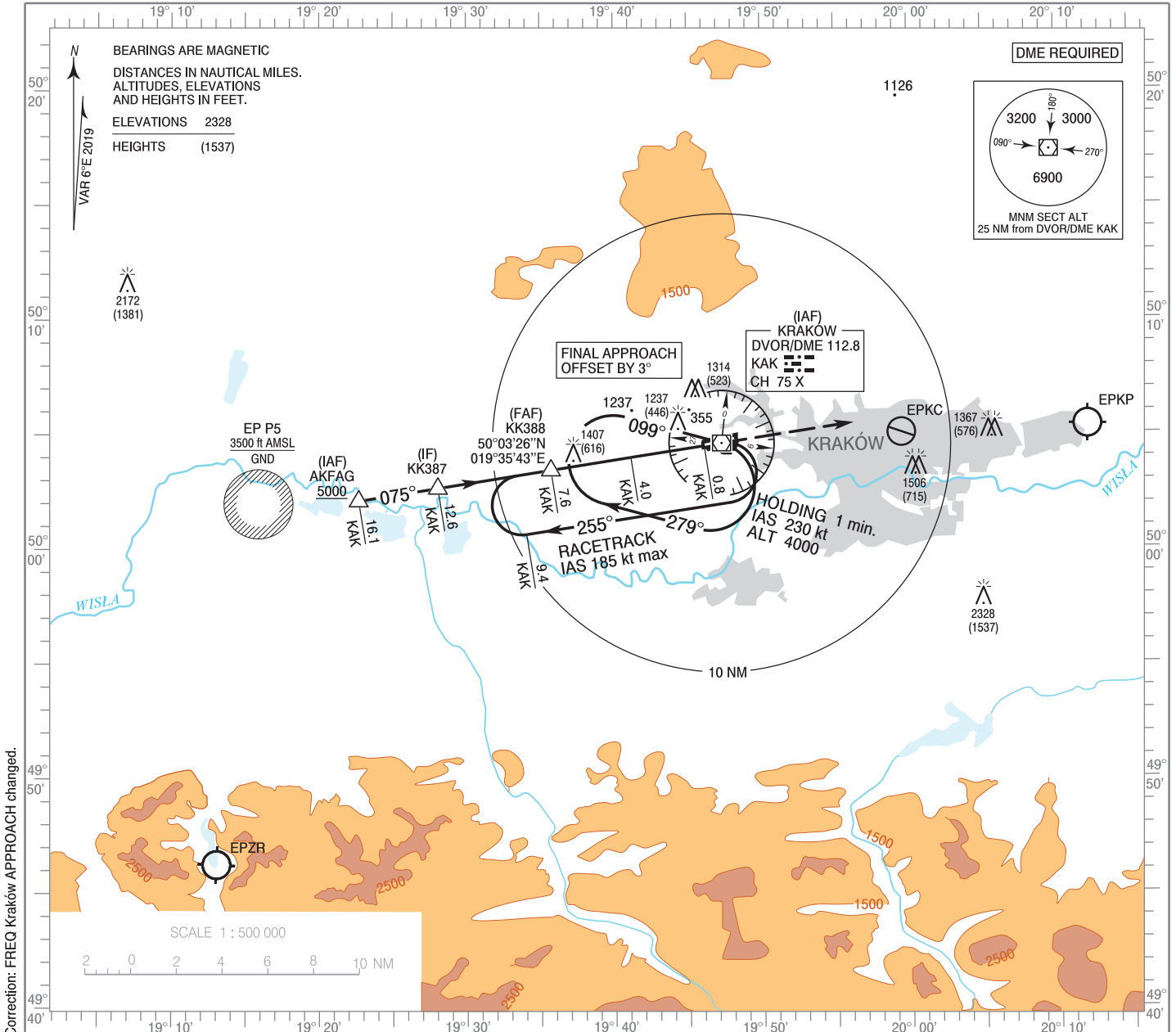


**INSTRUMENT
APPROACH
CHART - ICAO**

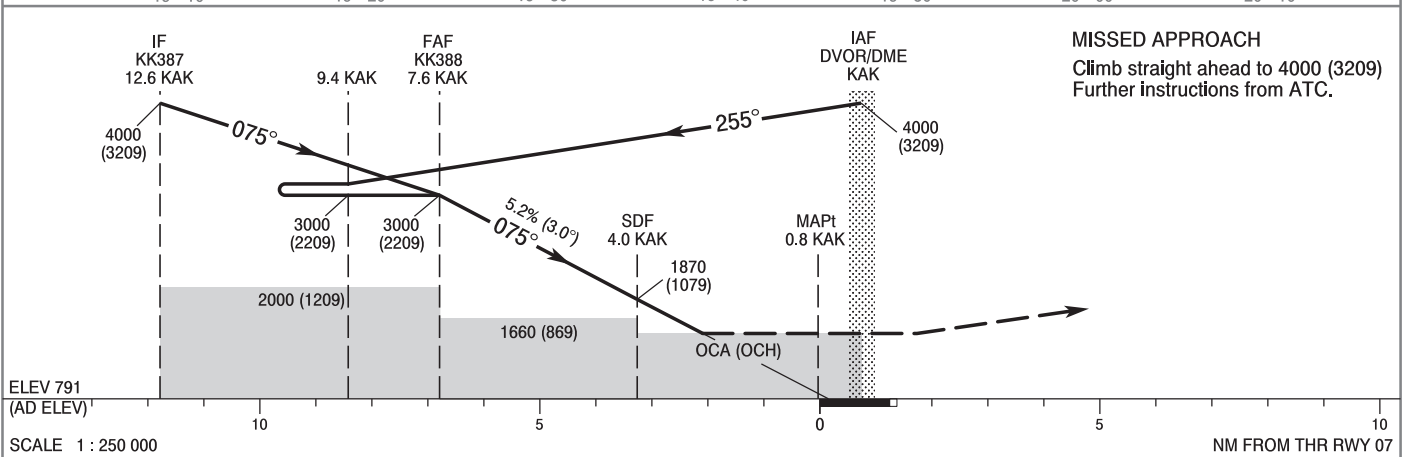
AERODROME ELEV 791 ft
THR RWY 07 ELEV 791 ft
HEIGHTS RELATED TO AD ELEV

Kraków APPROACH 121.075, 126.530, 126.975
Kraków TOWER 123.255
ATIS 112.800, 126.130

**Kraków - Balice
VOR
RWY 07 (CAT A/B/C/D)**



Correction: FREQ Kraków APPROACH changed.



MISSED APPROACH
Climb straight ahead to 4000 (3209)
Further instructions from ATC.

OCA (OCH)					Distance FAF - MAPt 6.8 NM							
Cat. of ACFT	A	B	C	D	Speed	kt	80	100	120	140	160	180
Straight - in	1500 (709)	1500 (709)	1500 (709)	1500 (709)	Time	min : s	5 : 05	4 : 04	3 : 24	2 : 55	2 : 33	2 : 16
	When stepdown fix not received				Rate of descent	ft/min	420	530	630	740	840	950
Circling*	1660 (869)	1660 (869)	1740 (949)	1960 (1169)	Final approach distance/altitude (height)							
	Distance	6	5	4	3	2						
*ACFT Cat C and D circling north of aerodrome only.					Altitude (height)	2510 (1719)	2190 (1399)	1870 (1079)	1560 (769)	1240 (449)		

INSTRUMENT
APPROACH
CHART - ICAOKraków - Balice
VOR
RWY 07 (CAT A/B/C/D)

FIX / POINT	LATITUDE	LONGITUDE	FIX FORMATION	
IAF DVOR/DME KAK	50°04'35.6"N	019°47'16.8"E		
IAF AKFAG	50°02'06.7"N	019°22'41.0"E	261.25° GEO (255° MAG) DVOR KAK	16.05 NM DME KAK
IF KK387	50°02'39.6"N	019°28'02.7"E	261.25° GEO (255° MAG) DVOR KAK	12.55 NM DME KAK
FAF KK388	50°03'26.3"N	019°35'42.5"E	261.26° GEO (255° MAG) DVOR KAK	7.55 NM DME KAK
SDF	50°03'59.0"N	019°41'08.7"E	261.26° GEO (255° MAG) DVOR KAK	4.00 NM DME KAK
MAPt	50°04'28.6"N	019°46'06.0"E	261.26° GEO (255° MAG) DVOR KAK	0.77 NM DME KAK
Final approach descent angle: 3.00°				