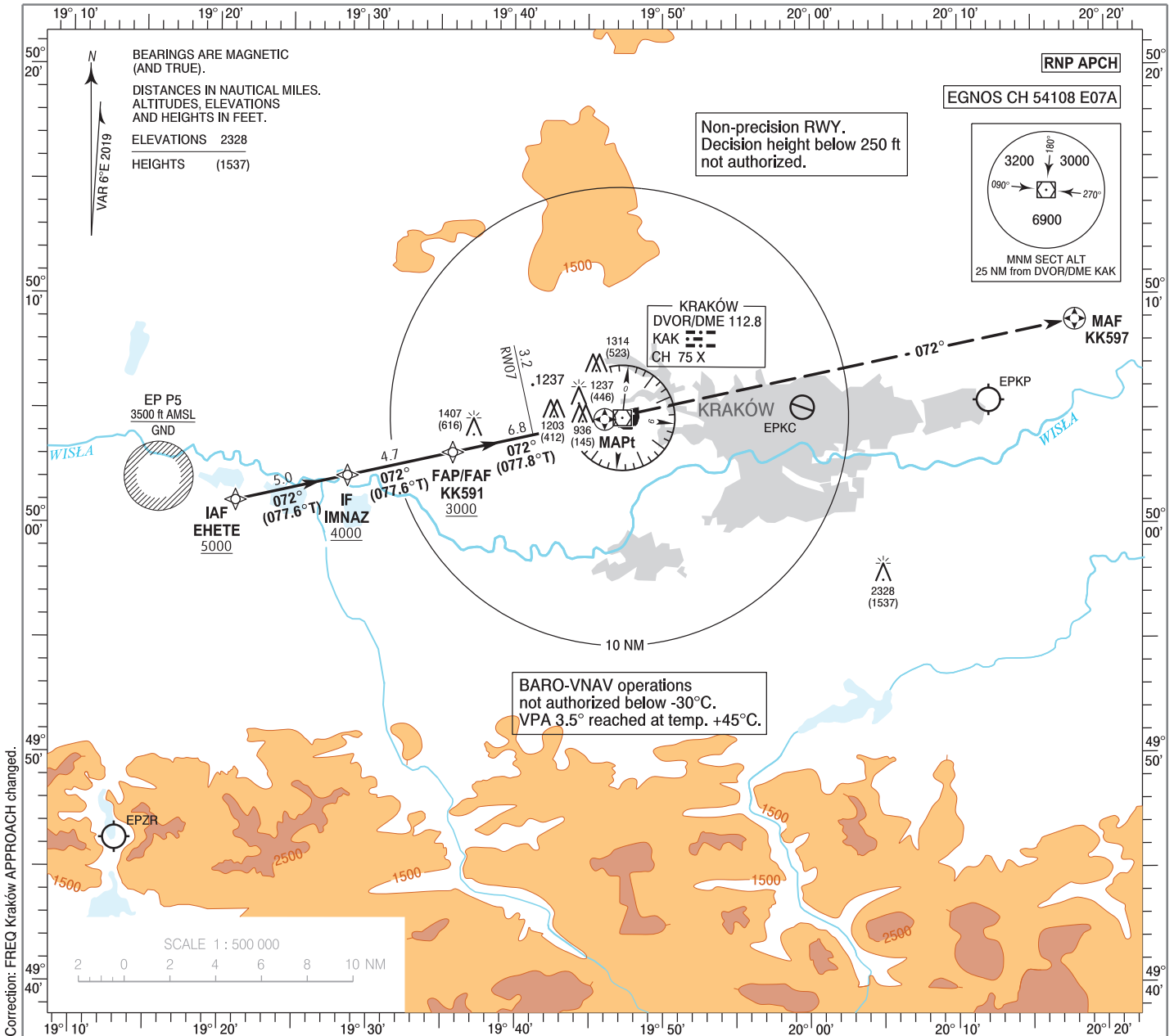


**INSTRUMENT
APPROACH
CHART - ICAO**

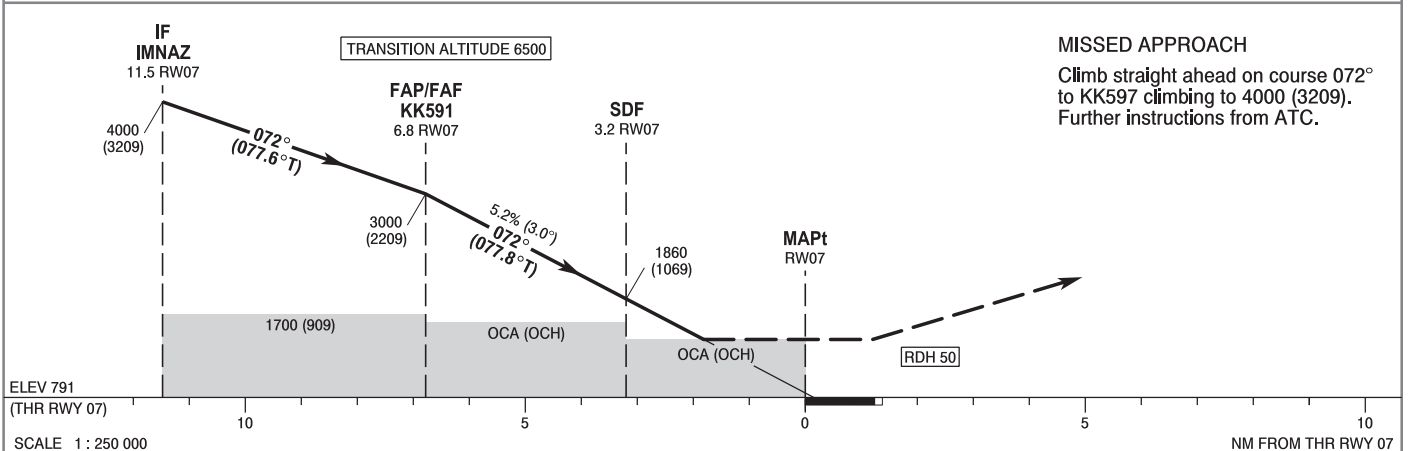
AERODROME ELEV 791 ft
THR RWY 07 ELEV 791 ft
HEIGHTS RELATED TO THR RWY 07

Kraków APPROACH 121.075, 126.530, 126.975
Kraków TOWER 123.255
ATIS 112.800, 126.130

**Kraków - Balice
RNP
RWY 07 (CAT A/B/C/D)**



Correction: FREQ Kraków APPROACH changed.



MISSED APPROACH
Climb straight ahead on course 072° to KK597 climbing to 4000 (3209). Further instructions from ATC.

		OCA (OCH)				Distance FAF - MAPt 6.8 NM							
Cat. of ACFT		A	B	C	D	Speed	kt	80	100	120	140	160	180
		Straight - in	LPV	991 (200)	1003 (212)	1011 (220)	1022 (231)	Time	min : s	5 : 06	4 : 05	3 : 24	2 : 55
LNAV / VNAV	1370 (579)		1380 (589)	1390 (599)	1400 (609)	Rate of descent	ft / min	420	530	630	740	840	950
LNAV	1420 (629)		1420 (629)	1420 (629)	1420 (629)			Final approach distance/altitude (height)					
		When stepdown fix not received				Distance		6	5	4	3		
ACFT Cat C and D circling north of aerodrome only		1610 (819)	1620 (829)	1740 (949)	1960 (1169)	Altitude (height)		2760 (1969)	2440 (1649)	2120 (1329)	1800 (1009)		

STRONA WOLNA

INTENTIONALLY LEFT BLANK

Kraków - Balice
RNP
RWY 07 (CAT A/B/C/D)

EPKK RNP RWY 07

SEQUENCE NUMBER	PATH TERMINATOR	WAYPOINT IDENTIFIER	FLY - OVER	COURSE/TRACK °M (°T)	DISTANCE (NM)	TURN DIRECTION	ALTITUDE	SPEED (kt)	VPA/TCH	NAV SPEC
001	IF	EHETE	-	-	-	-	+5000 ft	-	-	RNP APCH
002	TF	IMNAZ	-	072 (077.55)	5.00	-	+4000 ft	-	-	RNP APCH
003	TF	KK591	-	072 (077.64)	4.70	-	+3000 ft	-	-	RNP APCH
004	TF	RW07	Y	072 (077.78)	6.78	-	@841 ft	-	-3.0°/50	RNP APCH
005	CF	KK597	Y	072 (078.19)	20.97	-	+4000 ft	-	-	RNP APCH

WAYPOINT IDENTIFIER	COORDINATES	
EHETE (IAF)	50 00 59.6 N	019 21 06.8 E
IMNAZ (IF)	50 02 04.5 N	019 28 41.0 E
KK591 (FAP/FAF)	50 03 05.0 N	019 35 48.3 E
RW07 (MAPt)	50 04 31.4 N	019 46 05.1 E
KK597 (MAF)	50 08 53.0 N	020 17 56.8 E

SBAS FAS Data Block Coding Data

EPKK RNP RWY 07	
Input Data	
Parameters	Values
Operation Type:	0
SBAS Provider:	1
Airport Identifier:	EPKK
Runway:	07
Runway Direction:	0
Approach Performance Designator:	0
Route Indicator:	
Reference Path Data Selector:	0
Reference Path Identifier:	E07A
LTP/FTP Latitude:	500431.4300N
LTP/FTP Longitude:	0194605.1400E
LTP/FTP Ellipsoidal Height (metres):	281.3
FPAP Latitude:	500447.2405N
Delta FPAP Latitude (seconds):	15.8105
FPAP Longitude:	0194758.7730E
Delta FPAP Longitude (seconds):	113.6330
Threshold Crossing Height:	50.0
TCH Units Selector:	0
Glidepath Angle (degrees):	3.00
Course Width (metres):	105.00
Length Offset (metres):	0
HAL (metres):	40.0
VAL (metres):	35.0

Output Data	
Data Block	10 0B 0B 10 05 07 00 00 01 37 30 05 8C 72 7D 15 A8 C9 7B 08 FD 1E 85 7B 00 C2 77 03 F4 01 2C 01 64 00 C8 AF B6 1D 18 2C
Calculated CRC Value	B61D182C

Required Additional Data (not CRC wrapped)	
ICAO Code	KK
LTP/FTP Orthometric Height (metres)	241.1