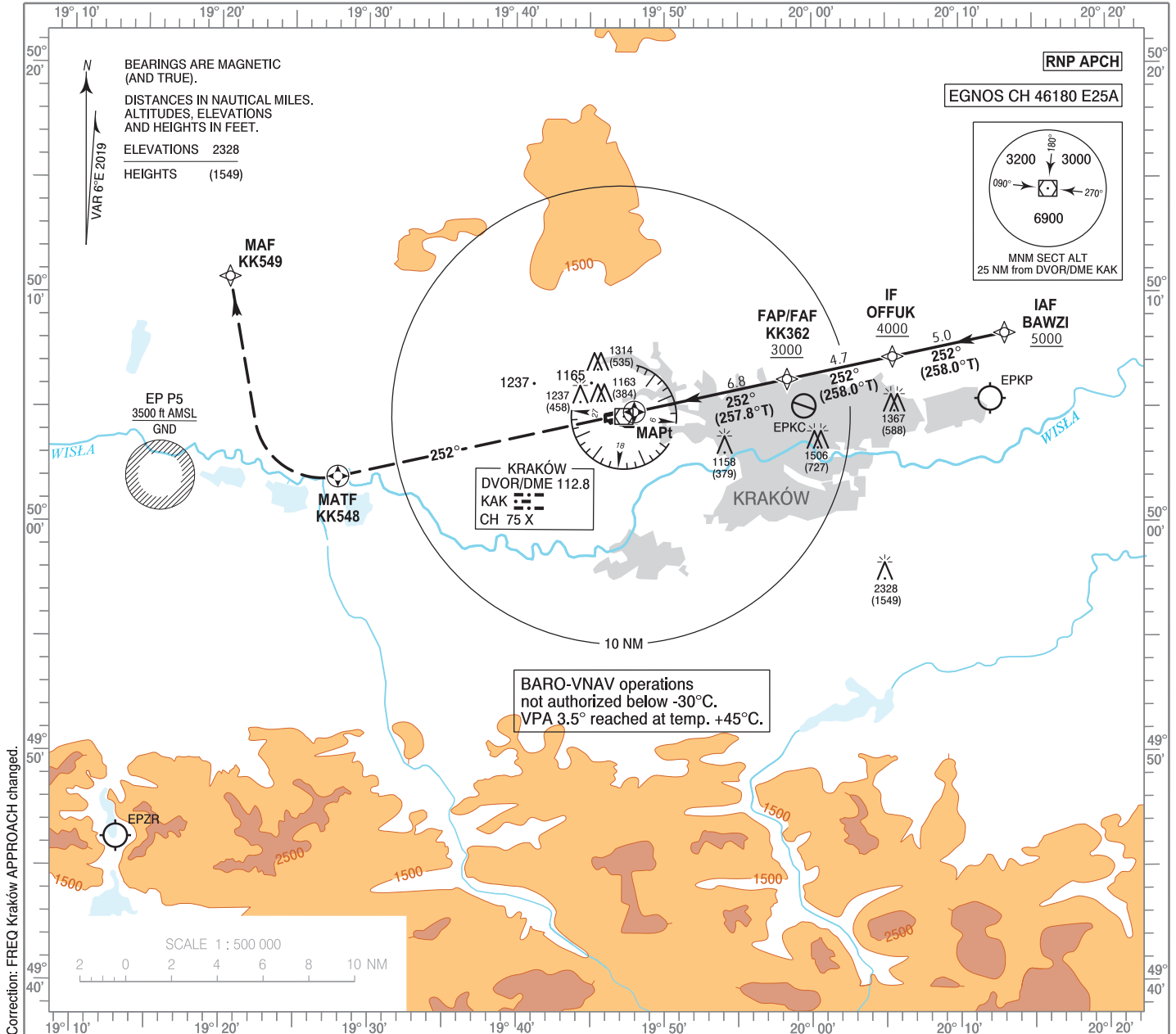


**INSTRUMENT
APPROACH
CHART - ICAO**

AERODROME ELEV 791 ft
THR RWY 25 ELEV 779 ft
HEIGHTS RELATED TO THR RWY 25

Kraków APPROACH 121.075, 126.530, 126.975
Kraków TOWER 123.255
ATIS 112.800, 126.130

**Kraków - Balice
RNP
RWY 25 (CAT A/B/C/D)**



Correction: FREQ Kraków APPROACH changed.

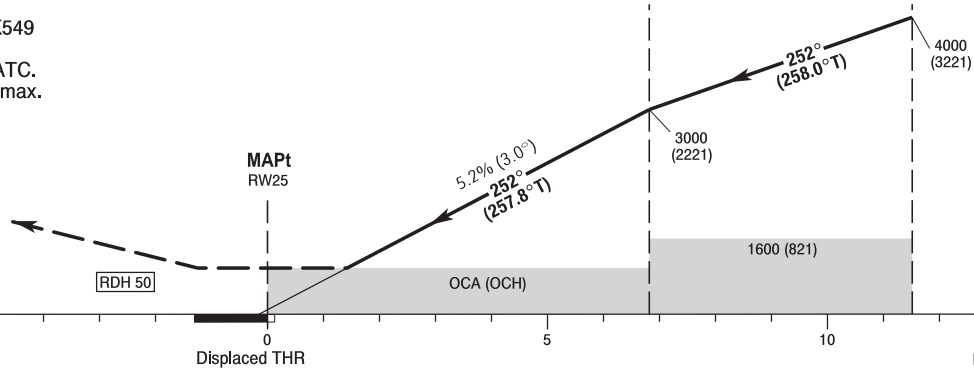
MISSED APPROACH

Climb straight ahead on course 252° to KK548, then turn right direct to KK549 climbing to 4000 (3221). Further instructions from ATC. Turn limited to 220 kt IAS max.

TRANSITION ALTITUDE 6500

FAP/FAF
KK362
6.8 RW25

IF
OFFUK
11.5 RW25



SCALE 1 : 250 000

Displaced THR

ELEV 779
(THR RWY 25)
NM FROM THR RWY 25

OCA (OCH)					Distance FAF - MAPt 6.8 NM								
Cat. of ACFT		A	B	C	D	Speed	kt	80	100	120	140	160	180
		Straight - in	LPV	980 (201)	992 (213)	1000 (221)	1011 (232)	Time	min : s	5 : 07	4 : 06	3 : 25	2 : 56
LNAV / VNAV	1110 (331)		1120 (341)	1130 (351)	1140 (361)	Rate of descent	ft / min	420	530	630	740	840	950
LNAV	1280 (501)		1280 (501)	1280 (501)	1280 (501)								
Circling (OCH AAL)*		1570 (779)	1620 (829)	1740 (949)	1960 (1169)	Distance		6	5	4	3	2	
* ACFT Cat. C and D circling north of aerodrome only.						Altitude (height)		2740 (1961)	2430 (1651)	2110 (1331)	1790 (1011)	1470 (691)	

STRONA WOLNA

INTENTIONALLY LEFT BLANK

**Kraków - Balice
RNP
RWY 25 (CAT A/B/C/D)**

EPKK RNP RWY 25

SEQUENCE NUMBER	PATH TERMINATOR	WAYPOINT IDENTIFIER	FLY - OVER	COURSE/TRACK °M (°T)	DISTANCE (NM)	TURN DIRECTION	ALTITUDE	SPEED (kt)	VPA/TCH	NAV SPEC
001	IF	BAWZI	-	-	-	-	+5000 ft	-	-	RNP APCH
002	TF	OFFUK	-	252 (258.02)	5.00	-	+4000 ft	-	-	RNP APCH
003	TF	KK362	-	252 (257.96)	4.70	-	+3000 ft	-	-	RNP APCH
004	TF	RW25	Y	252 (257.79)	6.83	-	@829 ft	-	-3.0°/50	RNP APCH
005	CF	KK548	Y	252 (257.55)	13.23	-	-	-220	-	RNP APCH
006	DF	KK549	-	-	-	R	+4000 ft	-220	-	RNP APCH

WAYPOINT IDENTIFIER	COORDINATES	
BAWZI (IAF)	50 08 13.7 N	020 13 04.5 E
OFFUK (IF)	50 07 11.8 N	020 05 28.3 E
KK362 (FAP/FAF)	50 06 13.2 N	019 58 19.8 E
RW25 (MAPt)	50 04 47.3 N	019 47 58.8 E
KK548 (MATF)	50 01 58.0 N	019 27 55.6 E
KK549 (MAF)	50 10 40.8 N	019 20 34.8 E

SBAS FAS Data Block Coding Data

EPKK RNP RWY 25	
Input Data	
Parameters	Values
Operation Type:	0
SBAS Provider:	1
Airport Identifier:	EPKK
Runway:	25
Runway Direction:	0
Approach Performance Designator:	0
Route Indicator:	
Reference Path Data Selector:	0
Reference Path Identifier:	E25A
LTP/FTP Latitude:	500447.2500N
LTP/FTP Longitude:	0194758.7700E
LTP/FTP Ellipsoidal Height (metres):	277.6
FPAP Latitude:	500431.4130N
Delta FPAP Latitude (seconds):	-15.8370
FPAP Longitude:	0194605.1455E
Delta FPAP Longitude (seconds):	-113.6245
Threshold Crossing Height:	50.0
TCH Units Selector:	0
Glidepath Angle (degrees):	3.00
Course Width (metres):	105.00
Length Offset (metres):	0
HAL (metres):	40.0
VAL (metres):	35.0

Output Data	
Data Block	10 0B 0B 10 05 19 00 00 01 35 32 05 24 EE 7D 15 64 41 7F 08 D8 1E 46 84 FF 4F 88 FC F4 01 2C 01 64 00 C8 AF 7D 95 B1 0D
Calculated CRC Value	7D95B10D

Required Additional Data (not CRC wrapped)	
ICAO Code	KK
LTP/FTP Orthometric Height (metres)	237.4