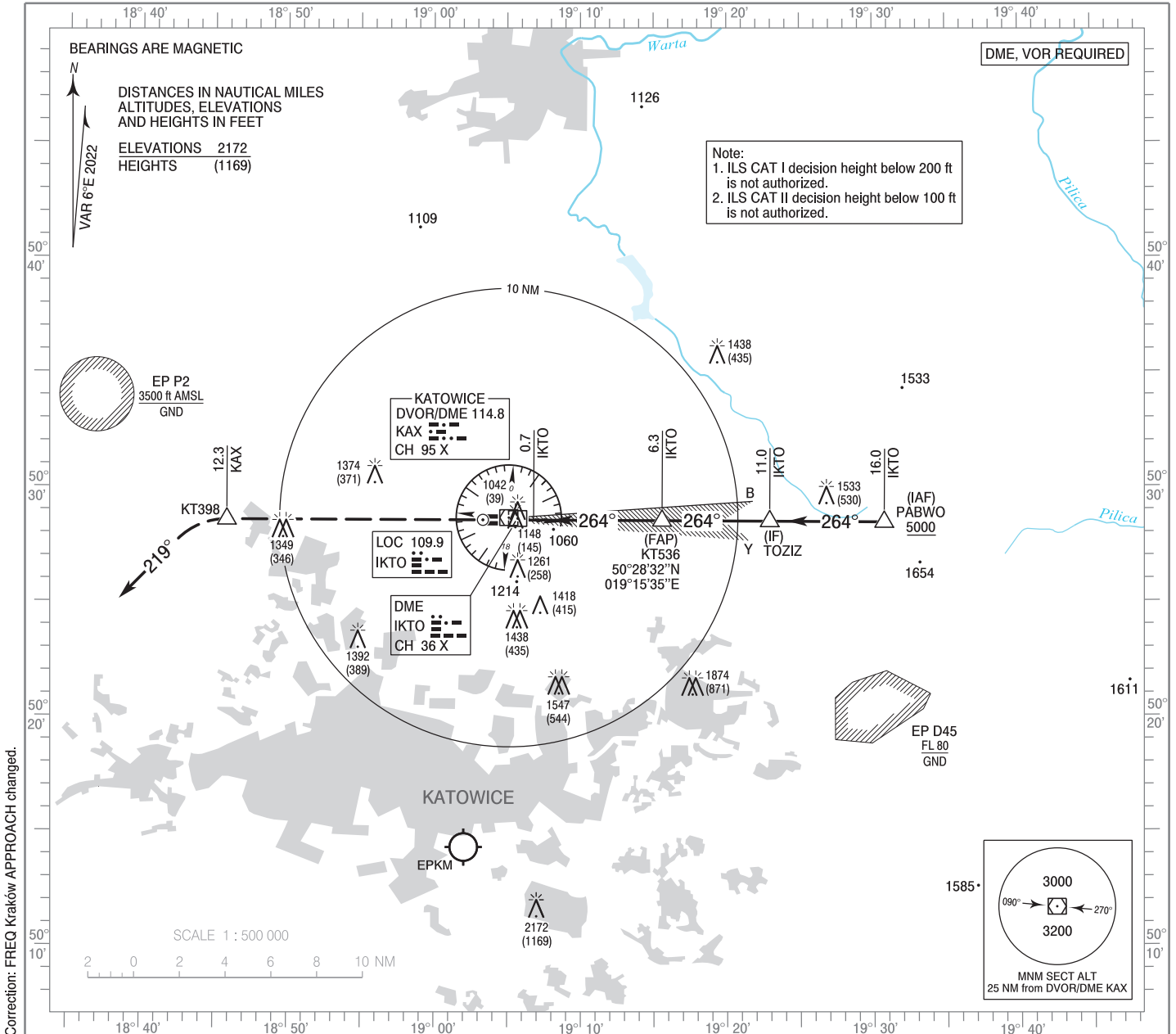


**INSTRUMENT
APPROACH
CHART - ICAO**

AERODROME ELEV 1007 ft
THR RWY 26 ELEV 1003 ft
HEIGHTS RELATED TO THR RWY 26

Kraków APPROACH 121.075, 126.975, 135.405
Katowice TOWER 129.255
ATIS 120.230

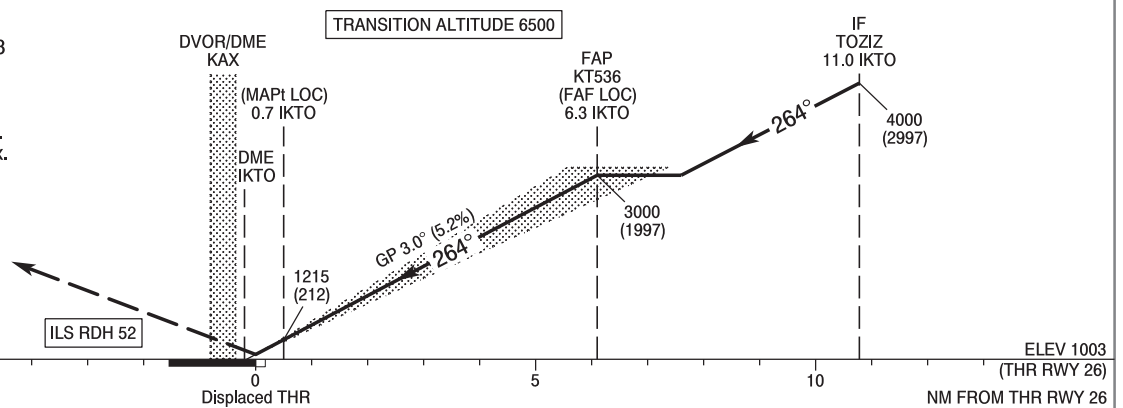
**Katowice - Pyrzowice
ILS CAT II or LOC
RWY 26 (CAT A/B/C/D)**



Correction: FREQ Kraków APPROACH changed.

MISSED APPROACH

Climb straight ahead to KT398
12.3 NM DME KAX,
then turn left on heading 219°
climbing to 4000 (2997).
Further instructions from ATC.
Turn limited to 220 kt IAS max.



SCALE 1 : 250 000

OCA (OCH)					Distance FAF - MAPt 5.6 NM								
Cat. of ACFT		A	B	C	D	Speed	kt	80	100	120	140	160	180
		Straight - in	Cat. I	1197 (194)	1209 (206)	1217 (214)	1228 (225)	Time	min : s	4 : 12	3 : 22	2 : 48	2 : 24
Cat. II	1084 (81)		1101 (98)	1113 (110)	1127 (124)	Rate of descent	ft / min	420	530	640	740	840	950
LOC	1410 (407)		1410 (407)	1410 (407)	1410 (407)		Final approach distance/altitude (height)						
Circling (OCH AAL)*		1470 (463)	1620 (613)	1820 (813)	1820 (813)	Distance		6	5	4	3	2	
						Altitude (height)		2910 (1907)	2590 (1587)	2270 (1267)	1960 (957)	1640 (637)	

*ACFT cat. D circling north of aerodrome only.

**INSTRUMENT
APPROACH
CHART - ICAO**

**Katowice - Pyrzowice
ILS CAT II or LOC
RWY 26 (CAT A/B/C/D)**

FIX / POINT	LATITUDE	LONGITUDE	FIX FORMATION	
IAF PABWO	50°28'27.2"N	019°30'45.7"E	270.19° GEO (264° MAG) LOC IKTO	16.00 NM DME IKTO
IF TOZIZ	50°28'29.8"N	019°22'56.1"E	270.18° GEO (264° MAG) LOC IKTO	11.00 NM DME IKTO
FAP KT536 (FAF LOC)	50°28'31.7"N	019°15'34.7"E	270.18° GEO (264° MAG) LOC IKTO	6.30 NM DME IKTO
MAPt (LOC)	50°28'33.3"N	019°06'48.2"E	270.20° GEO (264° MAG) LOC IKTO	0.70 NM DME IKTO
KT398	50°28'34.6"N	018°45'50.4"E	269.73° GEO (264° MAG) DVOR KAX	12.31 NM DME KAX
Final approach descent angle: 3.00°				