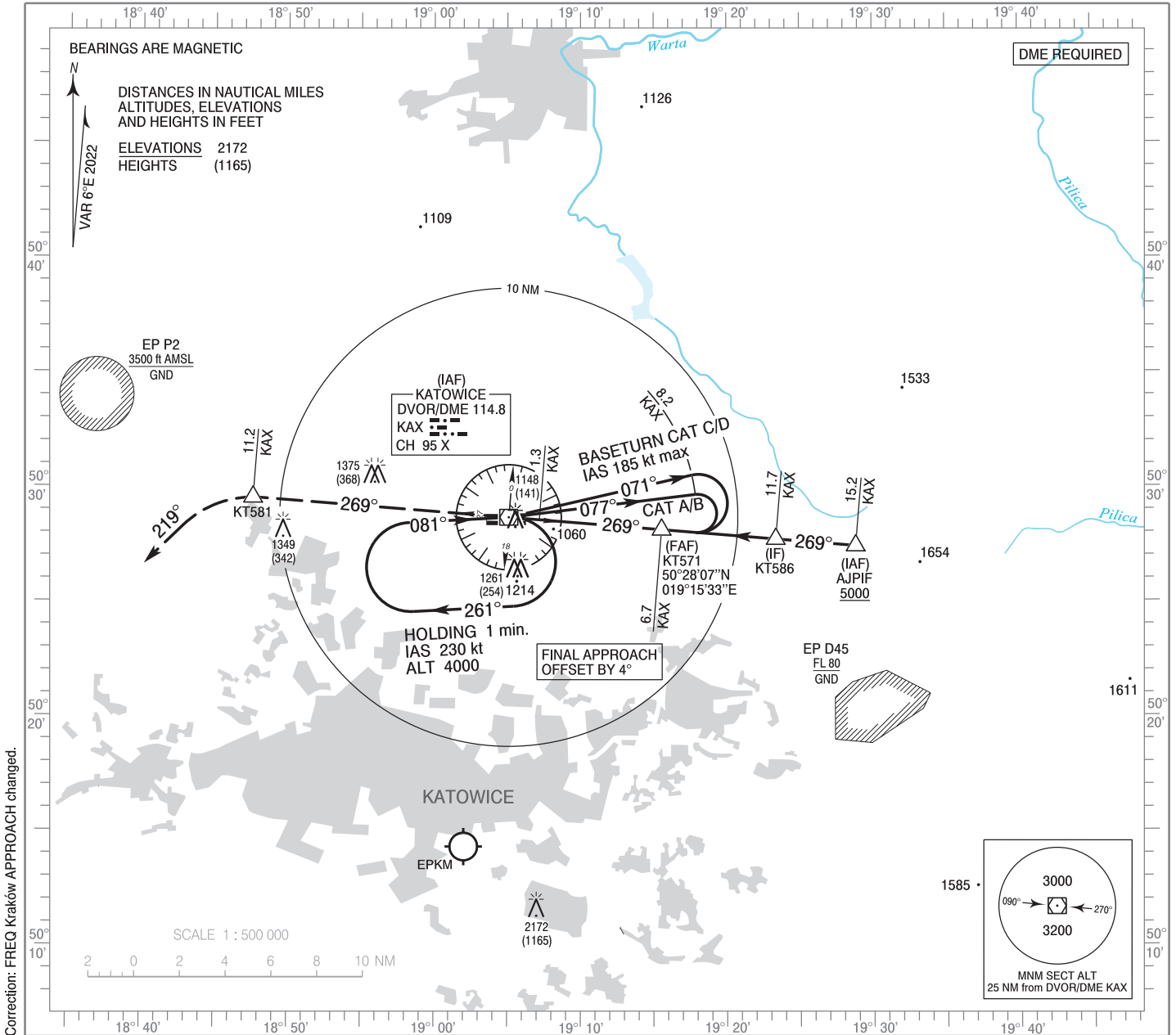


**INSTRUMENT
APPROACH
CHART - ICAO**

AERODROME ELEV 1007 ft
THR RWY 26 ELEV 1003 ft
HEIGHTS RELATED TO AD ELEV

Kraków APPROACH 121.075, 126.975, 135.405
Katowice TOWER 129.255
ATIS 120.230

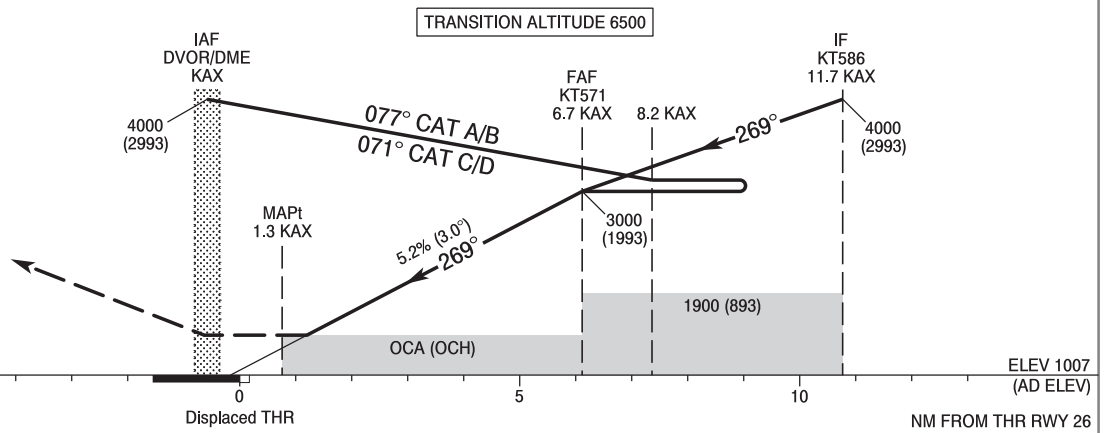
**Katowice - Pyrzowice
VOR
RWY 26 (CAT A/B/C/D)**



Correction: FREQ Kraków APPROACH changed.

MISSED APPROACH

Climb on course 269° to KT581 (11.2 NM KAX), then turn left on heading 219° climbing to 4000 (2993). Further instructions from ATC. Turn limited to 220 kt IAS max.



SCALE 1 : 250 000

Displaced THR

NM FROM THR RWY 26

Cat. of ACFT	OCA (OCH)				Speed	Distance FAF - MAPt 5.4 NM						
	A	B	C	D		kt	80	100	120	140	160	180
Straight - in	1440 (433)	1440 (433)	1440 (433)	1440 (433)	Time	min : s	4 : 01	3 : 13	2 : 41	2 : 18	2 : 00	1 : 47
					Rate of descent	ft / min	420	530	630	740	840	950
					Final approach distance/altitude (height)							
Circling*	1470 (463)	1620 (613)	1820 (813)	1820 (813)	Distance	6	5	4	3			
					Altitude (height)	2780 (1773)	2470 (1463)	2150 (1143)	1830 (823)			

*ACFT cat. D circling north of aerodrome only.

INSTRUMENT
APPROACH
CHART - ICAOKatowice - Pyrzowice
VOR
RWY 26 (CAT A/B/C/D)

FIX / POINT	LATITUDE	LONGITUDE	FIX FORMATION	
IAF DVOR/DME KAX	50°28'39.7"N	019°05'06.4"E		
IAF AJPIF	50°27'25.0"N	019°28'48.2"E	094.55° GEO (089° MAG) DVOR KAX	15.19 NM DME KAX
IF KT586	50°27'42.7"N	019°23'20.8"E	094.55° GEO (089° MAG) DVOR KAX	11.69 NM DME KAX
FAF KT571	50°28'07.4"N	019°15'32.8"E	094.55° GEO (089° MAG) DVOR KAX	6.69 NM DME KAX
MAPt	50°28'33.3"N	019°07'11.5"E	094.55° GEO (089° MAG) DVOR KAX	1.34 NM DME KAX
KT581	50°29'31.5"N	018°47'37.3"E	274.54° GEO (269° MAG) DVOR KAX	11.20 NM DME KAX
Final approach descent angle: 3.00°				