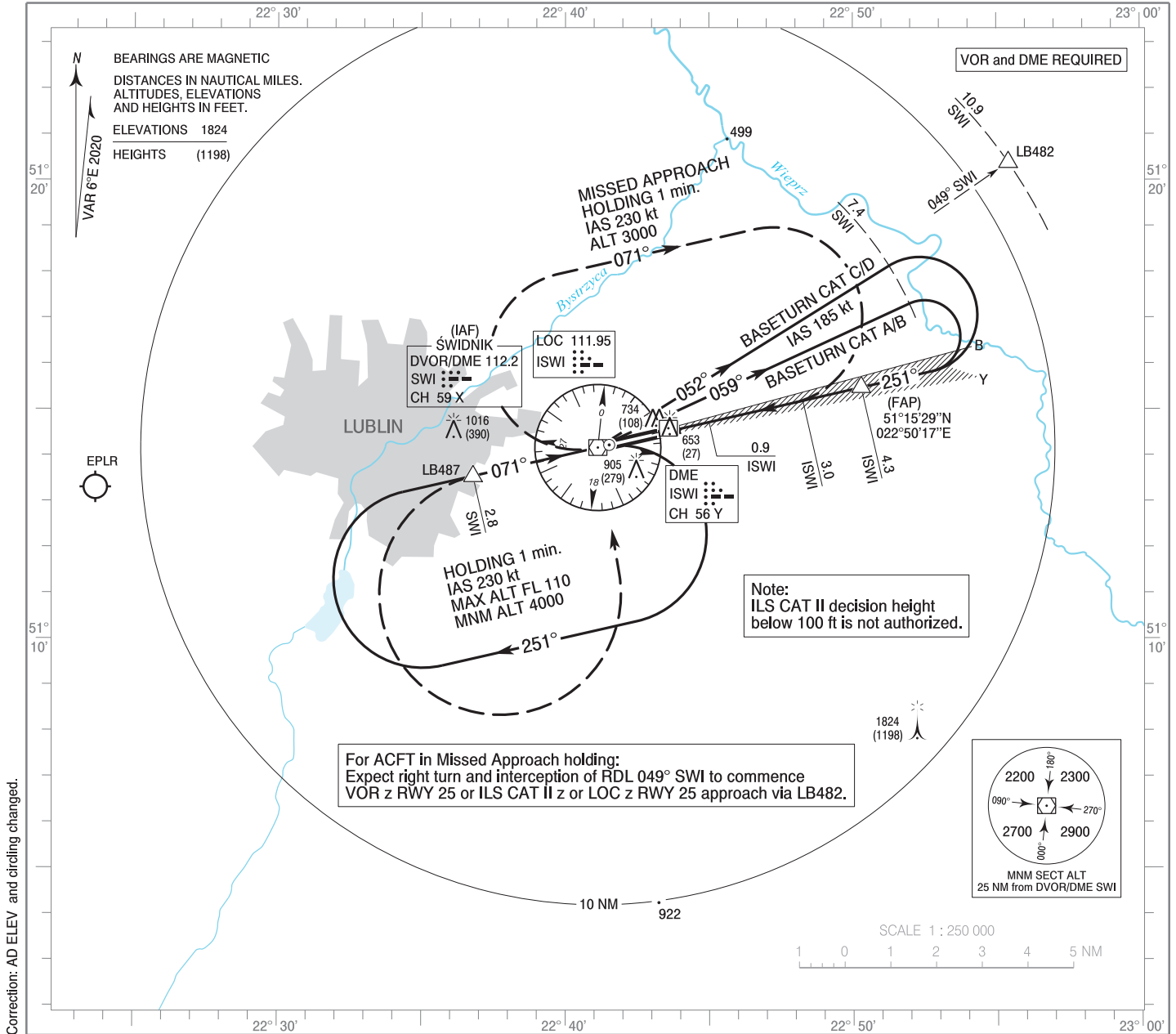


**INSTRUMENT  
APPROACH  
CHART - ICAO**

AERODROME ELEV 636 ft  
THR RWY 25 ELEV 626 ft  
HEIGHTS RELATED TO THR RWY 25

Lublin TOWER 136.430

**Lublin  
ILS CAT II y or LOC y  
RWY 25 (CAT A/B/C/D)**

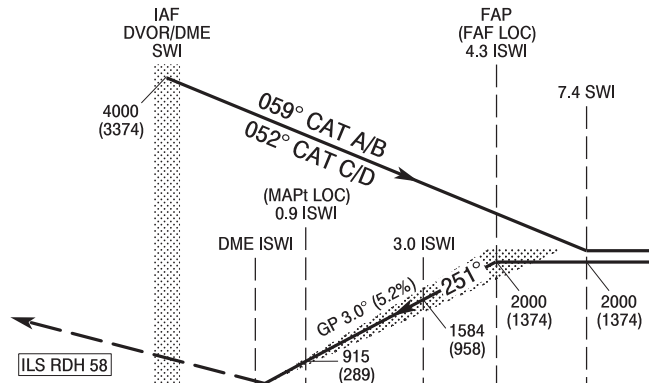


Correction: AD ELEV and circling changed.

**MISSED APPROACH**

Climb straight ahead to LB487 then turn left to DVOR/DME SWI and join Missed Approach holding at SWI climbing to 3000 (2374). Turn limited to 210 kt IAS max.

TRANSITION ALTITUDE 6500



SCALE 1 : 250 000  
ELEV 626 (THR RWY 25)  
NM FROM THR RWY 25

OCA (OCH)					Distance FAF - MAPt 3.4 NM								
Cat. of ACFT		A	B	C	D	Speed	kt	80	100	120	140	160	180
		Straight-in	Cat. I	864 (238)	876 (250)	884 (258)	895 (269)	Time	min : s	2 : 33	2 : 03	1 : 42	1 : 28
Cat. II	695 (69)		712 (86)	724 (98)	738 (112)	Rate of descent	ft / min	430	540	640	740	850	960
LOC	960 (334)		960 (334)	960 (334)	960 (334)		Final approach distance/altitude (height)						
Circling (OCH AAL)*		1200 (564)	1200 (564)	1410 (774)	1410 (774)	Distance		4	3	2	1		
*Circling south of aerodrome only						Altitude (height)		1900 (1274)	1580 (954)	1260 (634)	940 (314)		

**INSTRUMENT  
APPROACH  
CHART - ICAO**

**Lublin**  
**ILS CAT II y or LOC y**  
**RWY 25 (CAT A/B/C/D)**

FIX / POINT	LATITUDE	LONGITUDE	FIX FORMATION	
IAF DVOR/DME SWI	51°14'10.2"N	022°41'07.7"E		
FAP (FAF LOC)	51°15'28.6"N	022°50'16.8"E	257.23° GEO (251° MAG) LOC ISWI	4.31 NM DME ISWI
MAPt (LOC)	51°14'43.3"N	022°44'59.7"E	257.17° GEO (251° MAG) LOC ISWI	0.90 NM DME ISWI
LB487	51°13'32.6"N	022°36'47.3"E	257.08° GEO (251° MAG) DVOR SWI	2.80 NM DME SWI
Final approach descent angle: 3.00°				