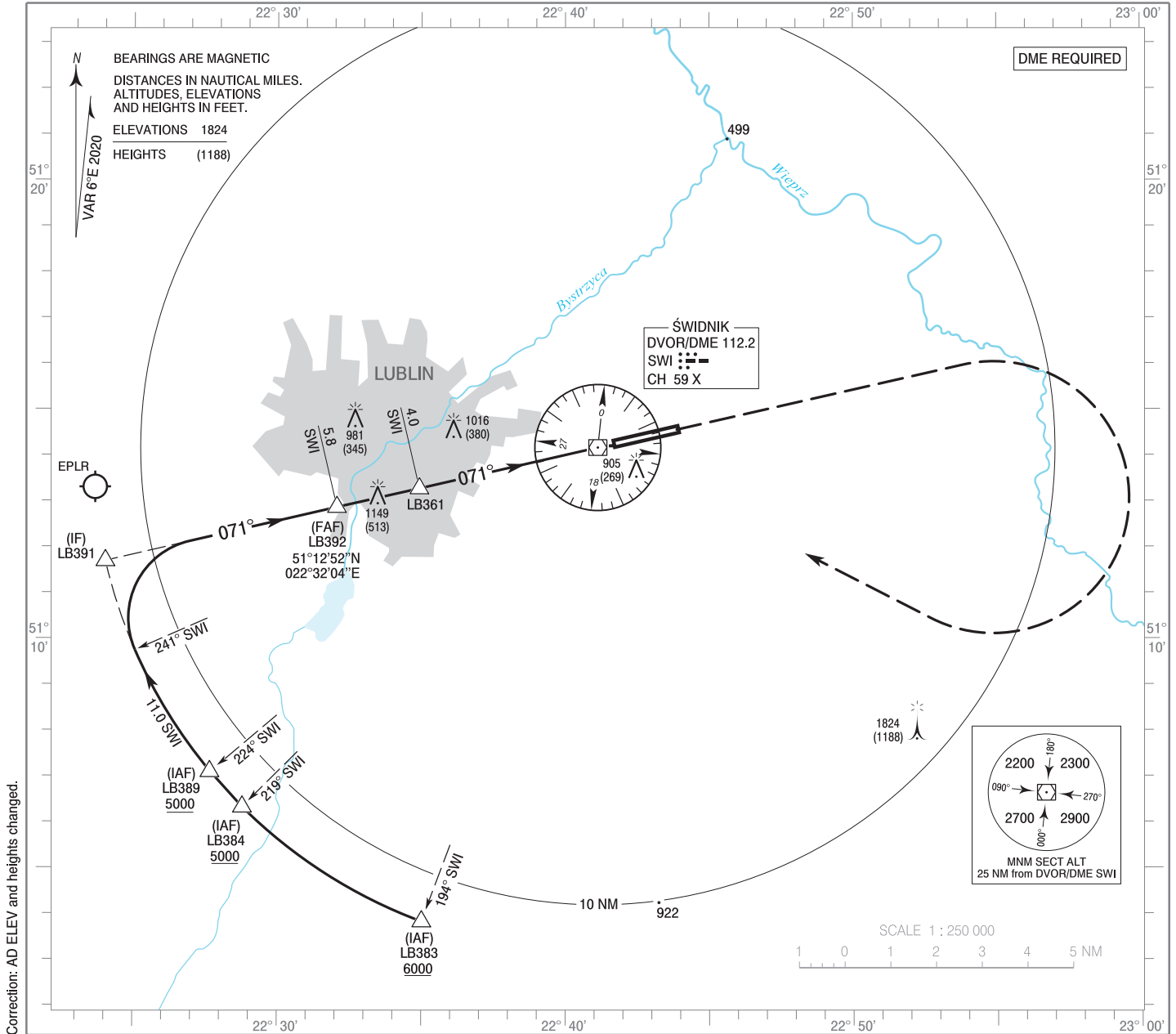


**INSTRUMENT
APPROACH
CHART - ICAO**

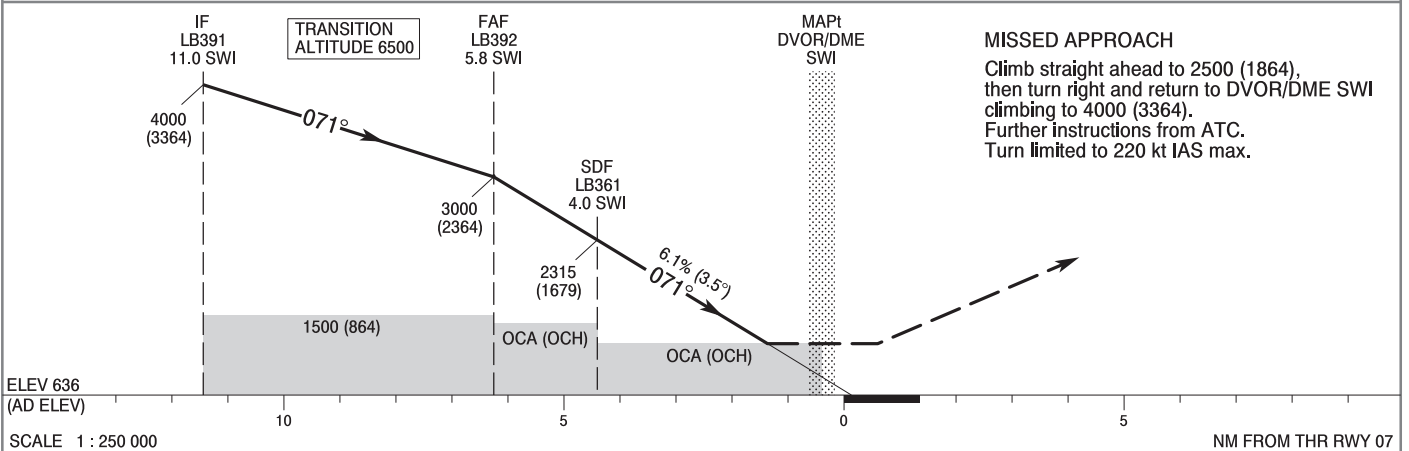
AERODROME ELEV 636 ft
THR RWY 07 ELEV 632 ft
HEIGHTS RELATED TO AD ELEV

Lublin TOWER 136.430

**Lublin
VOR z
RWY 07 (CAT A/B/C/D)**



Correction: AD ELEV and heights changed.



MISSED APPROACH
Climb straight ahead to 2500 (1864), then turn right and return to DVOR/DME SWI climbing to 4000 (3364). Further instructions from ATC. Turn limited to 220 kt IAS max.

OCA (OCH)					Distance FAF - MAPt 5.8 NM							
Cat. of ACFT	A	B	C	D	Speed	kt	80	100	120	140	160	180
Straight-in	1190 (554)	1190 (554)	1190 (554)	1190 (554)	Time	min : s	4 : 23	3 : 31	2 : 55	2 : 30	2 : 12	1 : 57
	When stepdown fix not received				Rate of descent	ft / min	490	620	740	870	990	1110
Circling*	1410 (774)	1410 (774)	1410 (774)	1410 (774)	Final approach distance/altitude (height)							
	Distance	5	4	3	2	1						
*Circling south of aerodrome only					Altitude (height)	2690 (2054)	2320 (1684)	1950 (1314)	1500 (864)	1210 (574)		

INSTRUMENT
APPROACH
CHART - ICAOLUBLIN
VOR z
RWY 07 (CAT A/B/C/D)

FIX / POINT	LATITUDE	LONGITUDE	FIX FORMATION	
IAF LB383	51°03'49.8"N	022°35'01.0"E	200.44° GEO (194° MAG) DVOR SWI	11.04 NM DME SWI
IAF LB384	51°06'19.5"N	022°28'47.7"E	224.75° GEO (219° MAG) DVOR SWI	11.04 NM DME SWI
IAF LB389	51°07'05.8"N	022°27'39.8"E	230.21° GEO (224° MAG) DVOR SWI	11.04 NM DME SWI
IF LB391	51°11'41.4"N	022°24'01.7"E	257.12° GEO (251° MAG) DVOR SWI	11.04 NM DME SWI
FAF LB392	51°12'51.7"N	022°32'03.7"E	257.13° GEO (251° MAG) DVOR SWI	5.85 NM DME SWI
SDF LB361	51°13'16.5"N	022°34'55.8"E	257.12° GEO (251° MAG) DVOR SWI	4.00 NM DME SWI
MAP ^t DVOR/DME SWI	51°14'10.2"N	022°41'07.7"E		
Final approach descent angle: 3.50°				