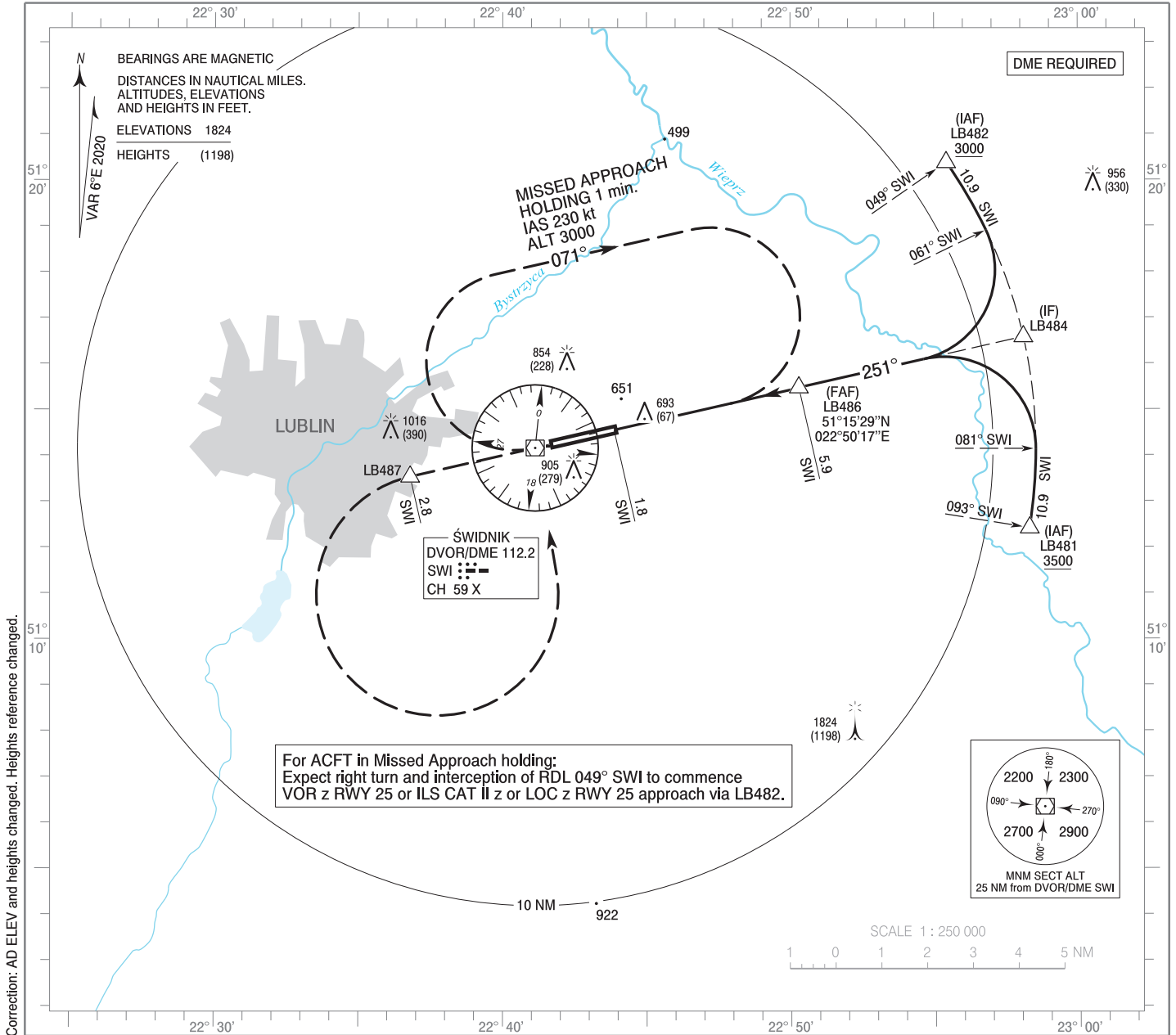


**INSTRUMENT  
APPROACH  
CHART - ICAO**

AERODROME ELEV 636 ft  
THR RWY 25 ELEV 626 ft  
HEIGHTS RELATED TO THR RWY 25

Lublin TOWER 136.430

**Lublin  
VOR z  
RWY 25 (CAT A/B/C/D)**

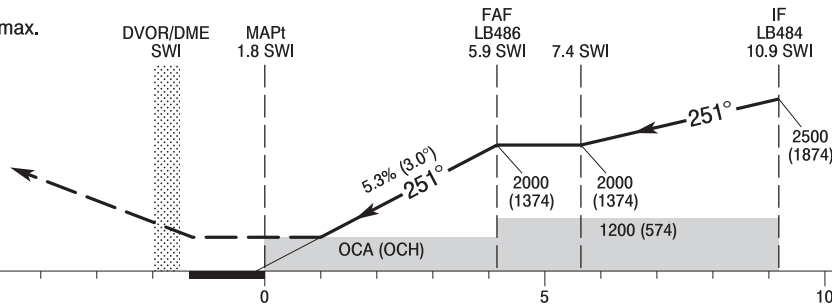


Correction: AD ELEV and heights changed. Heights reference changed.

**MISSED APPROACH**

Climb straight ahead to LB487,  
then turn left and return to DVOR/DME SWI  
and join Missed Approach holding at SWI  
climbing to 3000 (2374)  
Turn limited to 210 kt max.

TRANSITION ALTITUDE 6500



SCALE 1 : 250 000

NM FROM THR RWY 25

OCA (OCH)					Distance FAF - MAPt 4.1 NM								
Cat. of ACFT	A	B	C	D	Speed	kt	60	80	100	120	140	160	180
Straight - in	1000 (374)	1000 (374)	1000 (374)	1000 (374)	Time	min : s	4 : 08	3 : 06	2 : 29	2 : 04	1 : 46	1 : 33	1 : 23
					Rate of descent	ft / min	320	430	540	640	750	860	960
					Final approach distance/altitude (height)								
Circling (OCH AAL)*	1200 (564)	1200 (564)	1410 (774)	1410 (774)	Distance		5	4	3	2			
*Circling south of aerodrome only					Altitude (height)		1720 (1094)	1400 (774)	1080 (454)	760 (134)			

INSTRUMENT  
APPROACH  
CHART - ICAOLublin  
VOR z  
RWY 25 (CAT A/B/C/D)

FIX / POINT	LATITUDE	LONGITUDE	FIX FORMATION	
IAF LB482	51°20'23.3"N	022°55'25.4"E	055.15° GEO (049° MAG) DVOR SWI	10.93 NM DME SWI
IAF LB481	51°12'24.9"N	022°58'16.6"E	099.14° GEO (093° MAG) DVOR SWI	10.93 NM DME SWI
IF LB484	51°16'35.0"N	022°58'04.8"E	077.10° GEO (071° MAG) DVOR SWI	10.92 NM DME SWI
FAF LB486	51°15'28.6"N	022°50'16.8"E	077.12° GEO (071° MAG) DVOR SWI	5.90 NM DME SWI
MAPt	51°14'33.7"N	022°43'52.0"E	077.12° GEO (071° MAG) DVOR SWI	1.77 NM DME SWI
LB487	51°13'32.6"N	022°36'47.3"E	257.08° GEO (251° MAG) DVOR SWI	2.80 NM DME SWI
Final approach descent angle: 3.02°				