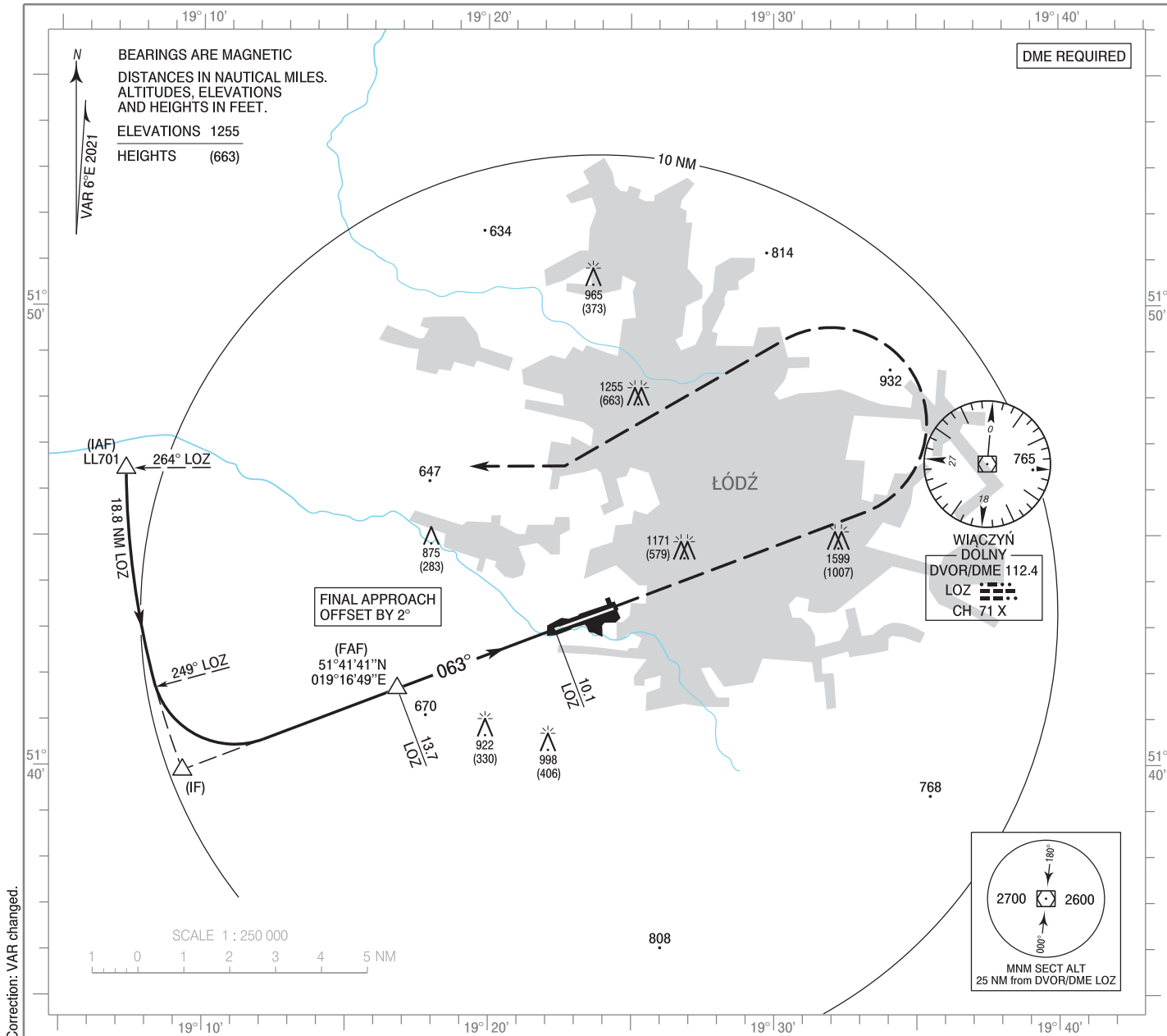


**INSTRUMENT  
APPROACH  
CHART - ICAO**

AERODROME ELEV 606 ft  
THR RWY 07 ELEV 592 ft  
HEIGHTS RELATED TO THR RWY 07

Łódź DELIVERY 120.005  
Łódź TOWER 124.230  
ATIS 135.680

**Łódź  
VOR  
RWY 07 (CAT A/B/C/D)**



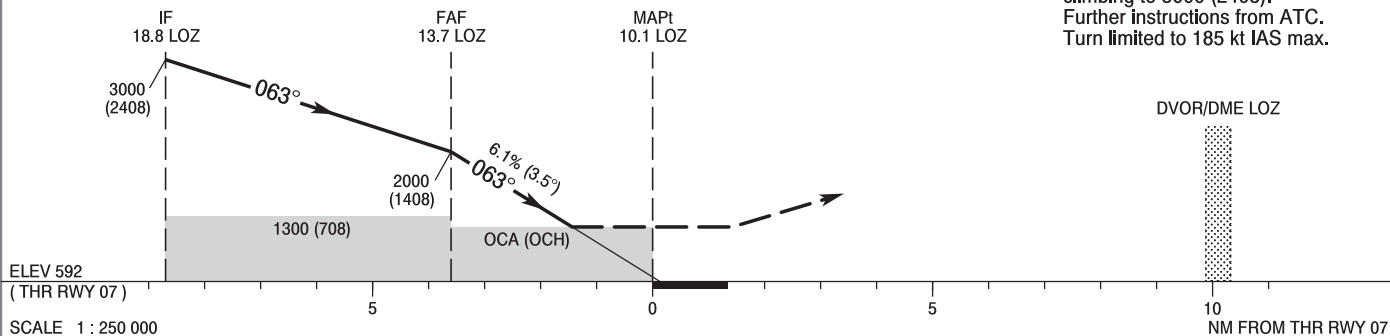
Correction: VAR changed.

TRANSITION ALTITUDE 6500

Note: PAPI 3°

**MISSED APPROACH**

Climb straight ahead to 2000 (1408), turn left to intercept RDL 264° LOZ climbing to 3000 (2408). Further instructions from ATC. Turn limited to 185 kt IAS max.



OCA (OCH)					Distance FAF - MAPt 3.7 NM							
Cat. of ACFT	A	B	C	D	Speed	kt	80	100	120	140	160	180
Straight - in	1120 (528)	1120 (528)	1120 (528)	1120 (528)	Time	min : s	2 : 45	2 : 12	1 : 50	1 : 34	1 : 22	1 : 13
					Rate of descent	ft / min	500	620	750	870	990	1120
					Final approach distance/altitude (height)							
Circling (OCH AAL)*	1120 (514)	1470 (864)	1570 (964)	2000 (1394)	Distance		13		12			
* ACFT cat C/D circling north of aerodrome only.					Altitude (height)		1720 (1128)		1350 (758)			

**INSTRUMENT  
APPROACH  
CHART - ICAO**

**Łódź  
VOR  
RWY 07 (CAT A/B/C/D)**

FIX / POINT	LATITUDE	LONGITUDE	FIX FORMATION	
IAF LL701	51°46'27.1"N	019°07'17.8"E	269.85° GEO (264° MAG) DVOR LOZ	18.75 NM DME LOZ
IF	51°39'53.6"N	019°09'18.6"E	249.32° GEO (243° MAG) DVOR LOZ	18.75 NM DME LOZ
FAF	51°41'41.1"N	019°16'49.0"E	249.32° GEO (243° MAG) DVOR LOZ	13.75 NM DME LOZ
MAPt	51°42'59.5"N	019°22'19.2"E	249.32° GEO (243° MAG) DVOR LOZ	10.08 NM DME LOZ
Final approach descent angle: 3.50°				