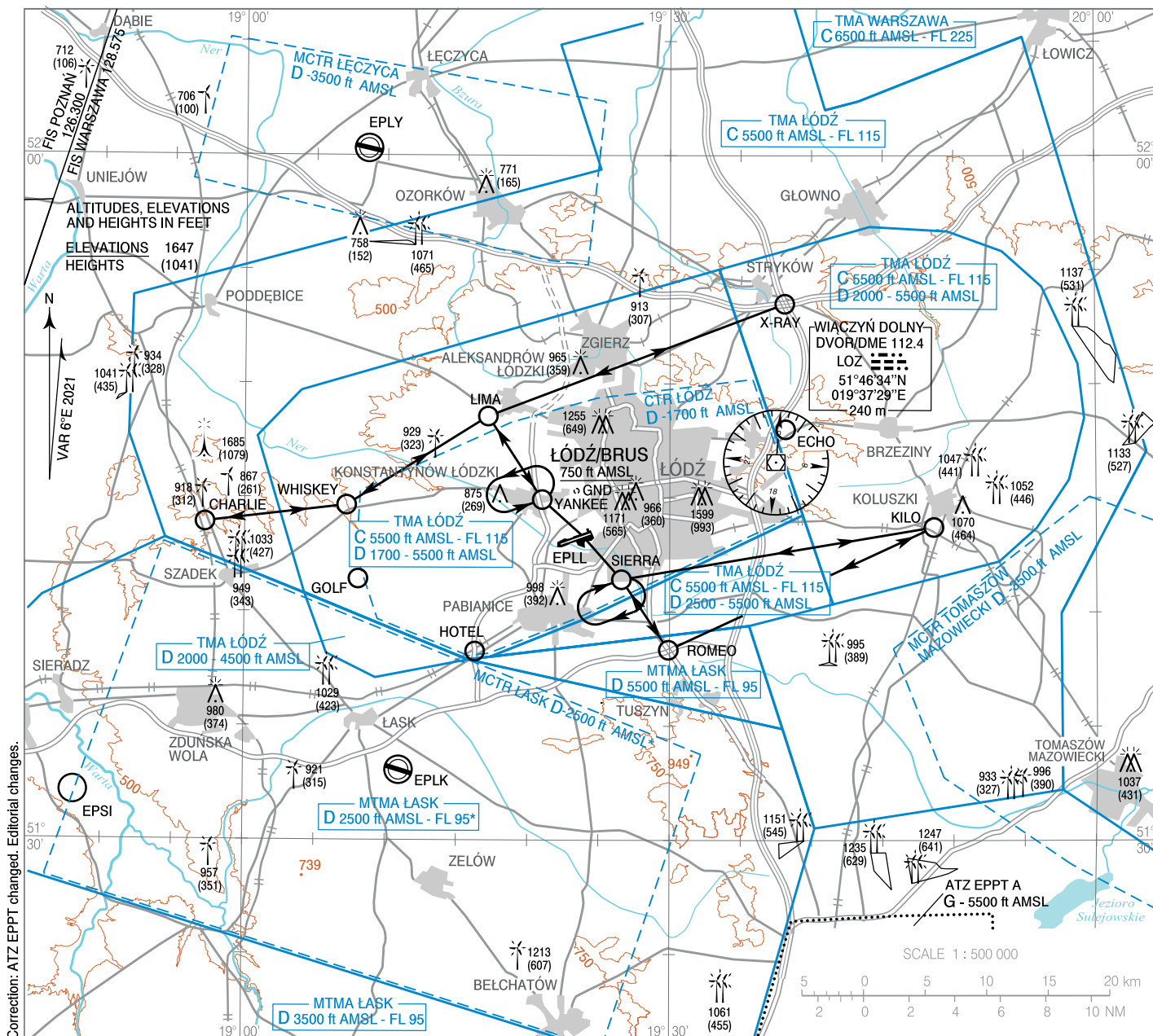


AERODROME ELEV 606 ft
HEIGHTS RELATED TO AD ELEV

Łódź TOWER 124.230

VFR
ARRIVAL AND DEPARTURE ROUTES

Łódź



Correction: ATZ EPPT changed. Editorial changes.

⊙ UAV VLOS flying areas (see: AIP ENR 5.3.1)

| POINT ID | LATITUDE | LONGITUDE | POINT DESCRIPTION |
|----------|------------|-------------|---|
| CHARLIE | 51°43'55"N | 018°57'13"E | Choszczewo town - intersection |
| ECHO | 51°48'00"N | 019°38'10"E | Industrial hall in Teolin town |
| GOLF | 51°41'26"N | 019°08'02"E | BTS GSM transceiver station in Pelagia town |
| HOTEL | 51°38'16"N | 019°16'17"E | Intersection of DK14 and S14 roads; 0.5 NM to the west of Chechio Drugie town |
| KILO | 51°43'43"N | 019°48'38"E | Southern side of Koluszki town |
| LIMA | 51°48'34"N | 019°17'10"E | Industrial halls 1 NM to the south west of Aleksandrów Łódzki town |
| ROMEO | 51°38'20"N | 019°29'55"E | Intersection of DK1 and S8 roads to the south of Rzgów town |
| SIERRA | 51°41'25"N | 019°26'36"E | Southern edge of ponds |
| WHISKEY | 51°44'40"N | 019°07'12"E | Kwiatkowice town near DK710 road |
| X-RAY | 51°53'30"N | 019°38'06"E | Intersection of A1 and A2 motorways |
| YANKEE | 51°44'55"N | 019°21'00"E | Kaufland 1 NM to the east of Konstancynów Łódzki town |

* excluding active TMA Łódź

See AIP Poland AD 2 EPLL