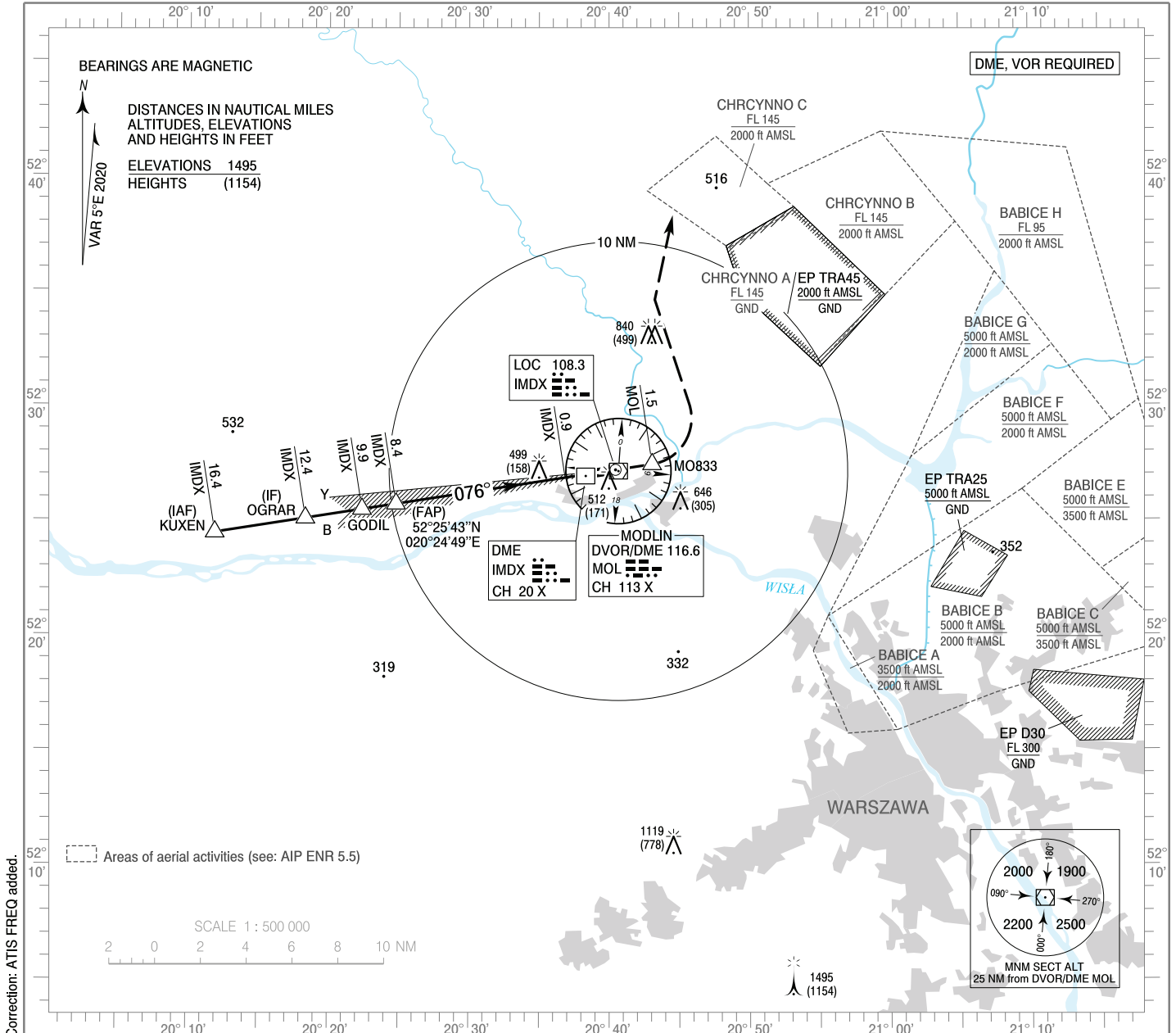


**INSTRUMENT
APPROACH
CHART - ICAO**

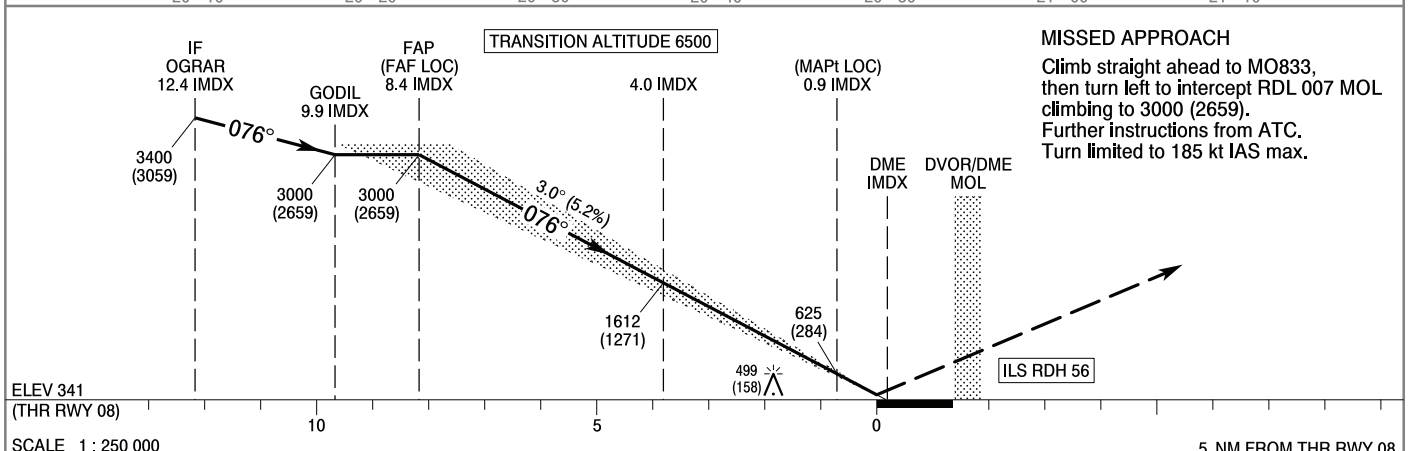
AERODROME ELEV 344 ft
THR RWY 08 ELEV 341 ft
HEIGHTS RELATED TO THR RWY 08

Warszawa APPROACH 125.055, 128.805, 129.380, 135.930
Modlin TOWER 123.930
ATIS 136.555

**Warszawa / Modlin
ILS CAT II or LOC
RWY 08 (CAT A/B/C/D)**



Correction: ATIS FREQ added.



MISSED APPROACH
Climb straight ahead to MO833, then turn left to intercept RDL 007 MOL climbing to 3000 (2659). Further instructions from ATC. Turn limited to 185 kt IAS max.

OCA (OCH)					Distance FAF - MAPt 7.5 NM								
Cat. of ACFT		A	B	C	D	Speed	kt	80	100	120	140	160	180
		Straight-in	Cat. I	502 (161)	514 (173)	522 (181)	533 (192)	Time	min : s	5 : 36	4 : 28	3 : 44	3 : 12
Cat. II	414 (73)		431 (90)	443 (102)	457 (116)	Rate of descent	ft / min	420	530	630	740	840	950
LOC	750 (409)		750 (409)	750 (409)	750 (409)		Final approach distance/altitude (height)						
Circling (OCH AAL)*		810 (466)	840 (496)	940 (596)	1040 (696)	Distance	7	6	5	4	3		
						Altitude (height)	2540 (2199)	2230 (1889)	1910 (1569)	1600 (1259)	1280 (939)		

INSTRUMENT
APPROACH
CHART - ICAOWARSAWA / Modlin
ILS CAT II or LOC
RWY 08 (CAT A/B/C/D)

FIX / POINT	LATITUDE	LONGITUDE	FIX FORMATION	
IAF KUXEN	52°24'27.7"N	020°11'54.4"E	080.89° GEO (076° MAG) LOC IMDX	16.37 NM DME IMDX
IF OGRAR	52°25'05.4"N	020°18'21.5"E	080.98° GEO (076° MAG) LOC IMDX	12.37 NM DME IMDX
GODIL	52°25'28.9"N	020°22'23.5"E	081.04° GEO (076° MAG) LOC IMDX	9.87 NM DME IMDX
FAP (FAF LOC)	52°25'42.9"N	020°24'49.4"E	081.06° GEO (076° MAG) LOC IMDX	8.36 NM DME IMDX
MAPt (LOC)	52°26'51.7"N	020°36'51.8"E	081.06° GEO (076° MAG) LOC IMDX	0.90 NM DME IMDX
MO833	52°27'26.6"N	020°43'04.1"E	078.37° GEO (073° MAG) DVOR MOL	1.50 NM DME MOL
Final approach descent angle: 3.00°				