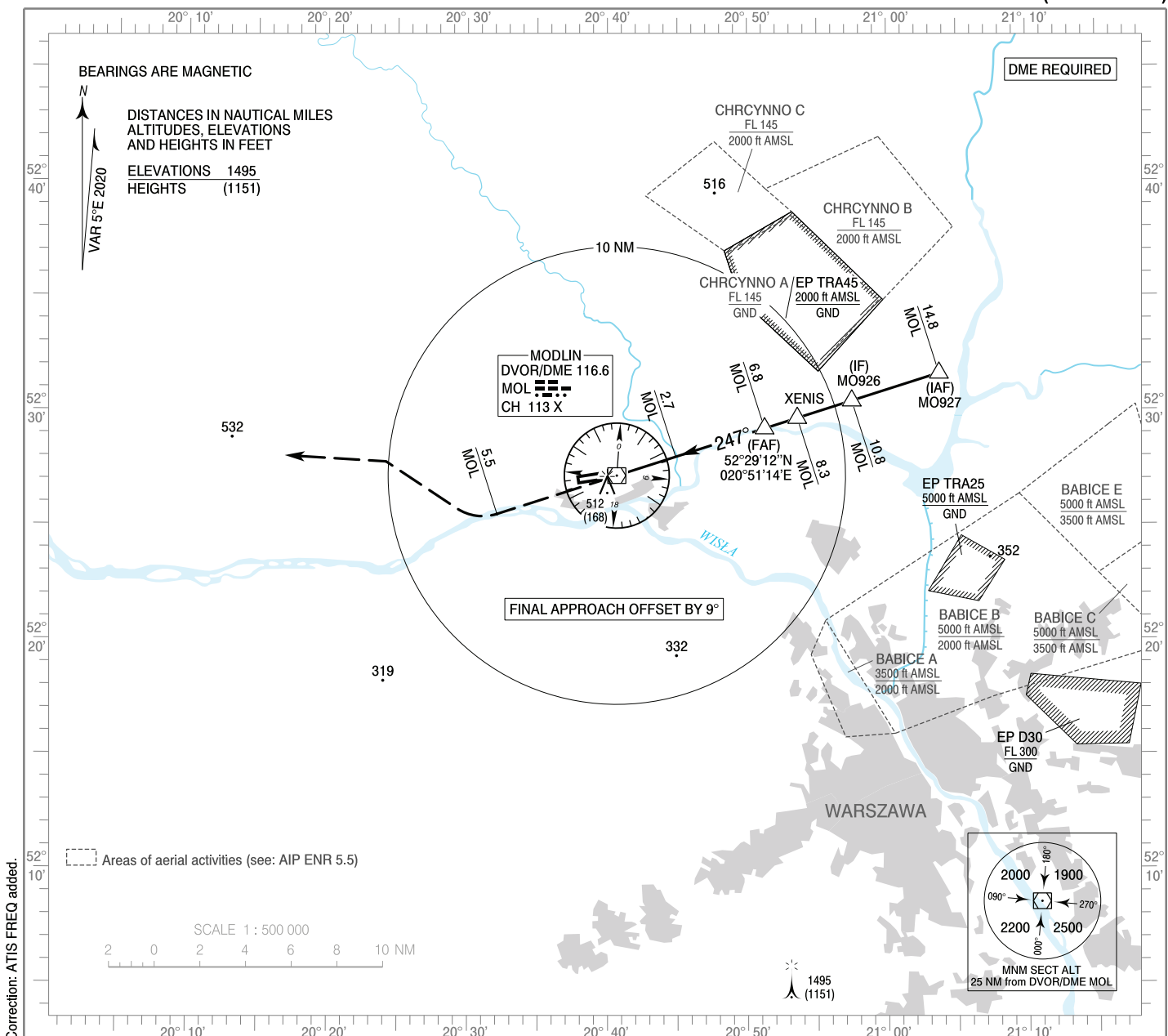


**INSTRUMENT  
APPROACH  
CHART - ICAO**

AERODROME ELEV 344 ft  
THR RWY 26 ELEV 340 ft  
HEIGHTS RELATED TO AD ELEV

Warszawa APPROACH 125.055, 128.805, 129.380, 135.930  
Modlin TOWER 123.930  
ATIS 136.555

**WARSZAWA / Modlin  
VOR  
RWY 26 (CAT A/B/C/D)**

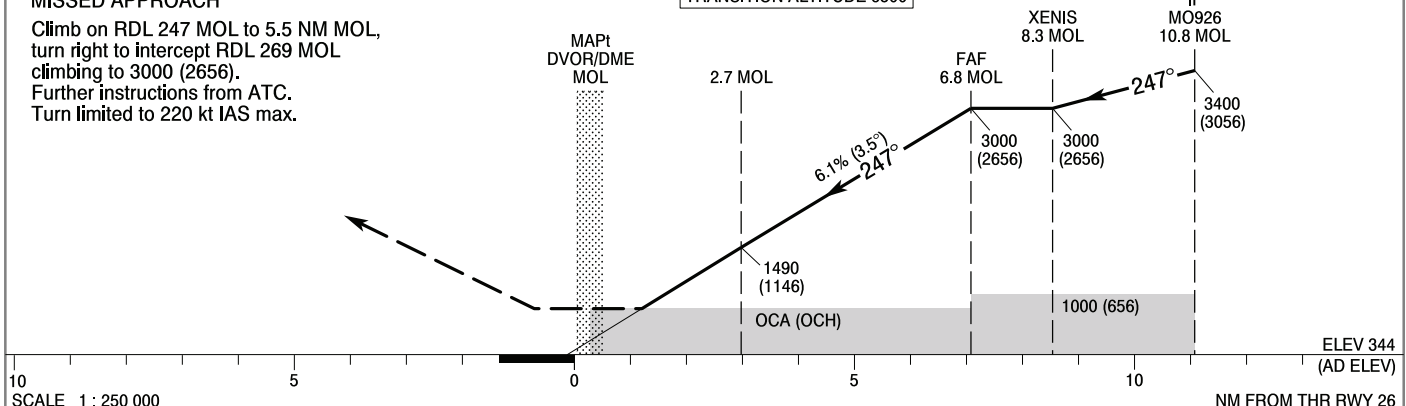


Correction: ATIS FREQ added.

**MISSED APPROACH**

Climb on RDL 247 MOL to 5.5 NM MOL, turn right to intercept RDL 269 MOL climbing to 3000 (2656). Further instructions from ATC. Turn limited to 220 kt IAS max.

TRANSITION ALTITUDE 6500



SCALE 1 : 250 000

OCA (OCH)					Distance FAF - MAPt 6.8 NM							
Cat. of ACFT	A	B	C	D	Speed	kt	80	100	120	140	160	180
Straight-in	740 (396)	790 (446)	830 (486)	850 (506)	Time	min : s	5 : 05	4 : 04	3 : 23	2 : 54	2 : 33	2 : 16
					Rate of descent	ft / min	500	620	750	870	990	1120
					Final approach distance/altitude (height)							
Circling*	810 (466)	840 (496)	940 (596)	1040 (696)	Distance		5	4	3	2	1	
*Circling north of aerodrome only					Altitude (height)		2340 (1996)	1970 (1626)	1600 (1256)	1250 (886)	860 (516)	

**INSTRUMENT  
APPROACH  
CHART - ICAO**

**WARSZAWA / Modlin  
VOR  
RWY 26 (CAT A/B/C/D)**

FIX / POINT	LATITUDE	LONGITUDE	FIX FORMATION	
IAF MO927	52°31'35.7"N	021°03'43.4"E	072.29° GEO (067° MAG) DVOR MOL	14.78 NM DME MOL
IF MO926	52°30'23.8"N	020°57'28.6"E	072.29° GEO (067° MAG) DVOR MOL	10.78 NM DME MOL
XENIS	52°29'38.8"N	020°53'34.5"E	072.29° GEO (067° MAG) DVOR MOL	8.28 NM DME MOL
FAF	52°29'11.7"N	020°51'14.1"E	072.29° GEO (067° MAG) DVOR MOL	6.78 NM DME MOL
MAP† DVOR/DME MOL	52°27'08.6"N	020°40'40.0"E		
Final approach descent angle: 3.50°				