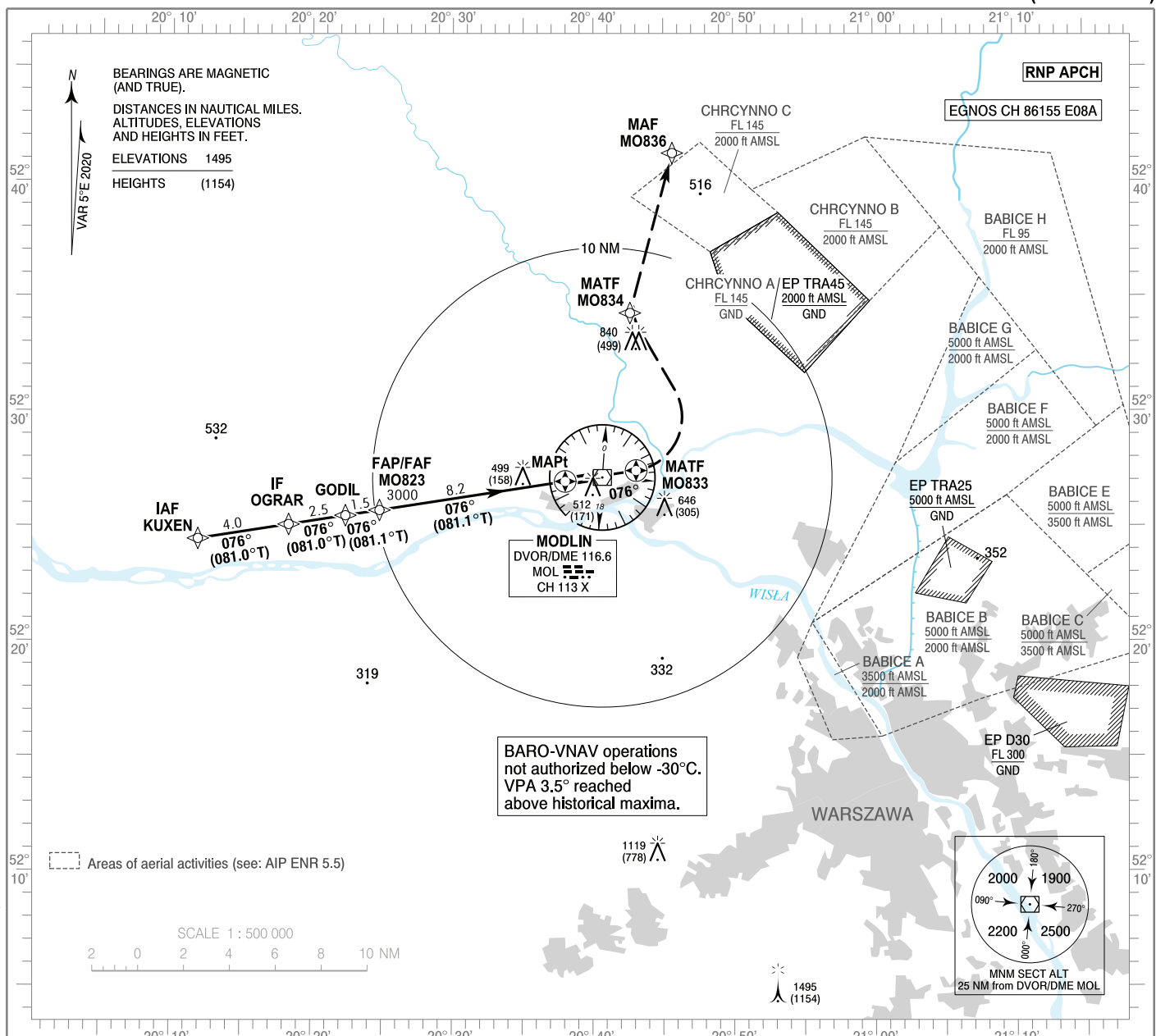


**INSTRUMENT
APPROACH
CHART - ICAO**

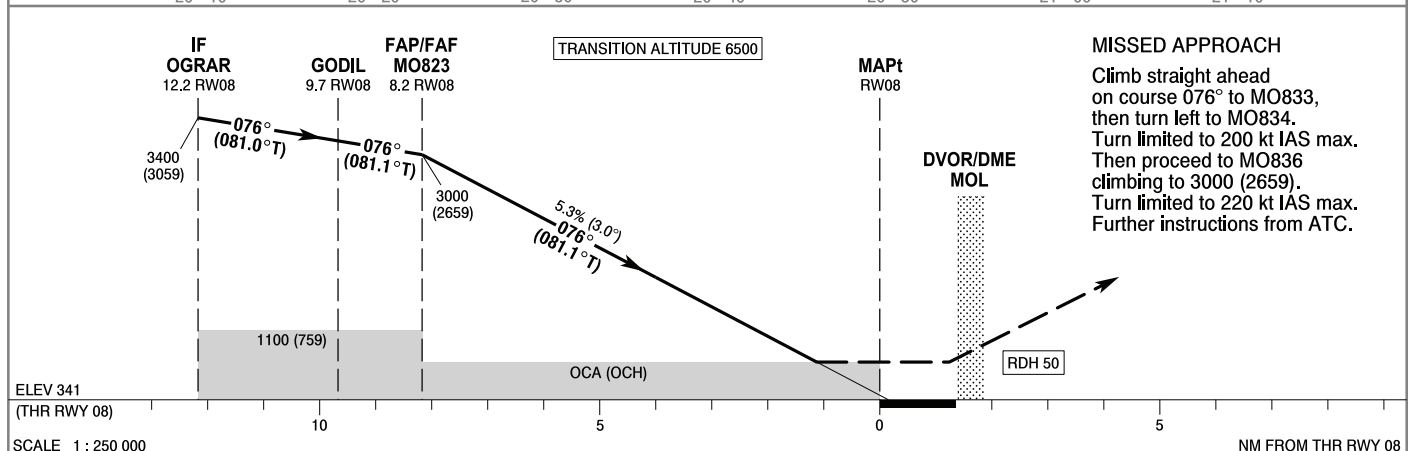
AERODROME ELEV 344 ft
THR RWY 08 ELEV 341 ft
HEIGHTS RELATED TO THR RWY 08

Warszawa APPROACH 125.055, 128.805, 129.380, 135.930
Modlin TOWER 123.930
ATIS 136.555

**Warszawa / Modlin
RNP
RWY 08 (CAT A/B/C/D)**



Correction: ATIS FREQ added.



OCA (OCH)					Distance FAF - MAPt 8.2 NM								
Cat. of ACFT	A	B	C	D	Speed	kt	80	100	120	140	160	180	
Straight-in	LPV	517 (176)	529 (188)	537 (196)	548 (207)	Time	min : s	6 : 08	4 : 55	4 : 06	3 : 31	3 : 04	2 : 41
	LNAV / VNAV	550 (209)	560 (219)	570 (229)	580 (239)	Rate of descent	ft / min	420	530	630	740	840	950
	LNAV	750 (409)	750 (409)	750 (409)	750 (409)		Final approach distance/altitude (height)						
Circling (OCH AAL)*	810 (466)	840 (496)	940 (596)	1040 (696)	Distance		8	6	4	2			
*Circling north of aerodrome only					Altitude (height)		2940 (2599)	2310 (1969)	1670 (1329)	1030 (689)			

STRONA WOLNA

INTENTIONALLY LEFT BLANK

**WARSZAWA / Modlin
RNP
RWY 08 (CAT A/B/C/D)**

EPMO RNP RWY 08 FROM KUXEN

SEQUENCE NUMBER	PATH TERMINATOR	WAYPOINT IDENTIFIER	FLY - OVER	COURSE/TRACK °M (°T)	DISTANCE (NM)	TURN DIRECTION	ALTITUDE	SPEED (kt)	VPA/TCH	NAV SPEC
001	IF	KUXEN	-	-	-	-	-	-220	-	RNP APCH
002	TF	OGRAR	-	076 (080.99)	4.00	-	+3400 ft	-	-	RNP APCH
003	TF	GODIL	-	076 (080.95)	2.50	-	-	-	-	RNP APCH
004	TF	MO823	-	076 (081.06)	1.50	-	+3000 ft	-	-	RNP APCH
005	TF	RW08	Y	076 (081.24)	8.17	-	@391 ft	-	-3.0°/50	RNP APCH
006	CF	MO833	Y	076 (081.32)	3.12	L	-	-200	-	RNP APCH
007	DF	MO834	-	-	-	R	-	-220	-	RNP APCH
008	TF	MO836		010 (014.78)	7.20	-	+3000 ft	-	-	RNP APCH

WAYPOINT IDENTIFIER	COORDINATES	
KUXEN (IAF)	52 24 27.7 N	020 11 54.4 E
OGRAR (IF)	52 25 05.4 N	020 18 21.5 E
GODIL	52 25 28.9 N	020 22 23.5 E
MO823 (FAP/FAF)	52 25 42.9 N	020 24 49.4 E
RW08 (MAPt)	52 26 58.2 N	020 38 01.3 E
MO833 (MATF)	52 27 26.6 N	020 43 04.1 E
MO834 (MATF)	52 34 17.6 N	020 42 38.3 E
MO836 (MAF)	52 41 14.7 N	020 45 39.0 E

SBAS FAS Data Block Coding Data

EPMO RNP RWY 08	
Input Data	
Parameters	Values
Operation Type:	0
SBAS Provider:	1
Airport Identifier:	EPMO
Runway:	08
Runway Direction:	0
Approach Performance Designator:	0
Route Indicator:	
Reference Path Data Selector:	0
Reference Path Identifier:	E08A
LTP/FTP Latitude:	522658.2400N
LTP/FTP Longitude:	0203801.3000E
LTP/FTP Ellipsoidal Height (metres):	135.0
FPAP Latitude:	522710.5440N
Delta FPAP Latitude (seconds):	12.3040
FPAP Longitude:	0204012.1390E
Delta FPAP Longitude (seconds):	130.8390
Threshold Crossing Height:	50.0
TCH Units Selector:	0
Glidepath Angle (degrees):	3.02
Course Width (metres):	105.00
Length Offset (metres):	0
HAL (metres):	40.0
VAL (metres):	35.0

Output Data	
Data Block	10 0F 0D 10 05 08 00 00 01 38 30 05 80 46 82 16 A8 E2 DA 08 46 19 20 60 00 2E FE 03 F4 01 2E 01 64 00 C8 AF 77 F1 BE 42
Calculated CRC Value	77F1BE42

Required Additional Data (not CRC wrapped)	
ICAO Code	MO
LTP/FTP Orthometric Height (metres)	103.9