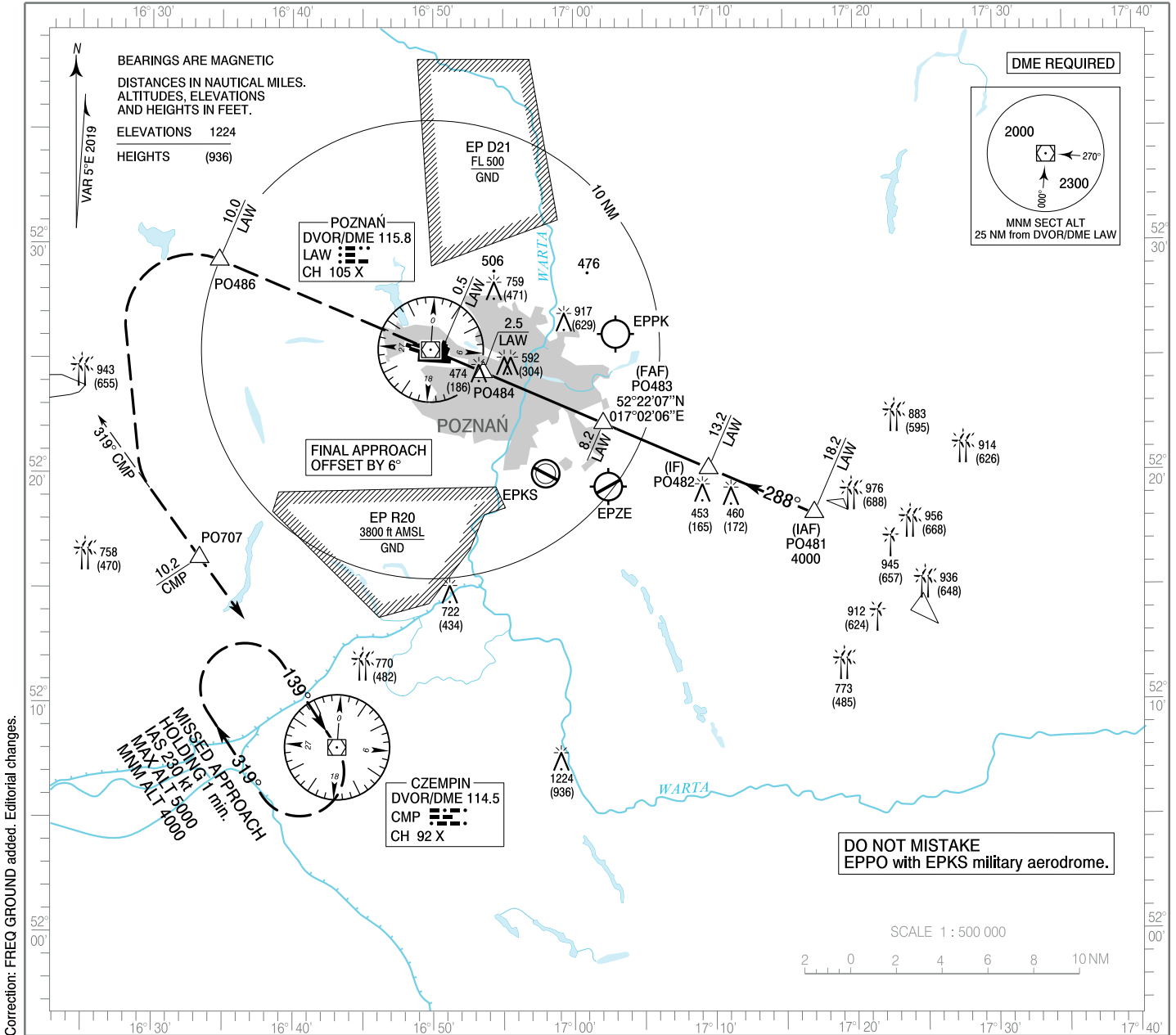


**INSTRUMENT
APPROACH
CHART - ICAO**

AERODROME ELEV 308 ft
THR RWY 28 ELEV 288 ft
HEIGHTS RELATED TO THR RWY 28

Poznań APPROACH 128.925
Poznań GROUND 124.140
Poznań TOWER 119.980
ATIS 124.705

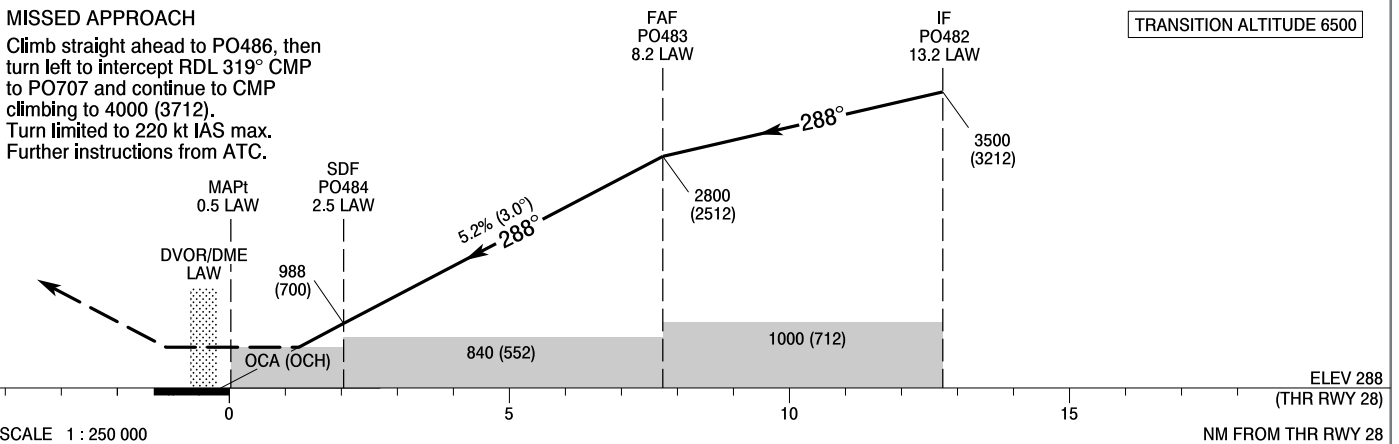
**Poznań - Ławica
VOR
RWY 28 (CAT A/B/C/D)**



Correction: FREQ GROUND added. Editorial changes.

MISSED APPROACH

Climb straight ahead to PO486, then turn left to intercept RDL 319° CMP to PO707 and continue to CMP climbing to 4000 (3712). Turn limited to 220 kt IAS max. Further instructions from ATC.



OCA (OCH)					Distance FAF - MAPt 7.7 NM							
Cat. of ACFT	A	B	C	D	Speed	kt	80	100	120	140	160	180
Straight-in	720 (432)	720 (432)	720 (432)	720 (432)	Time	min : s	5 : 48	4 : 39	3 : 52	3 : 19	2 : 54	2 : 35
	When stepdown fix not received				Rate of descent	ft/min	420	530	630	740	840	950
Circling (OCH AAL)	840 (532)	840 (532)	1160 (852)	1160 (852)	Final approach distance / altitude (height)							
	Distance	8	6	4	2	Altitude (height)	2740 (2452)	2110 (1822)	1470 (1182)	830 (542)		

INSTRUMENT
APPROACH
CHART - ICAOPoznań - Ławica
VOR
RWY 28 (CAT A/B/C/D)

FIX / POINT	LATITUDE	LONGITUDE	FIX FORMATION	
IAF PO481	52°18'08.9"N	017°17'03.8"E	113.14° GEO (108° MAG) DVOR LAW	18.19 NM DME LAW
IF PO482	52°20'08.1"N	017°09'35.3"E	113.14° GEO (108° MAG) DVOR LAW	13.19 NM DME LAW
FAF PO483	52°22'06.9"N	017°02'06.1"E	113.14° GEO (108° MAG) DVOR LAW	8.19 NM DME LAW
SDF PO484	52°24'21.5"N	016°53'34.2"E	113.14° GEO (108° MAG) DVOR LAW	2.50 NM DME LAW
MAPt	52°25'09.6"N	016°50'30.5"E	113.14° GEO (108° MAG) DVOR LAW	0.46 NM DME LAW
PO486	52°29'15.1"N	016°34'46.1"E	293.14° GEO (288° MAG) DVOR LAW	10.00 NM DME LAW
PO707	52°16'17.4"N	016°33'23.0"E	324.15° GEO (319° MAG) DVOR CMP	10.25 NM DME CMP
DVOR/DME CMP	52°07'59.9"N	016°43'08.5"E		
Final approach descent angle: 3.00°				