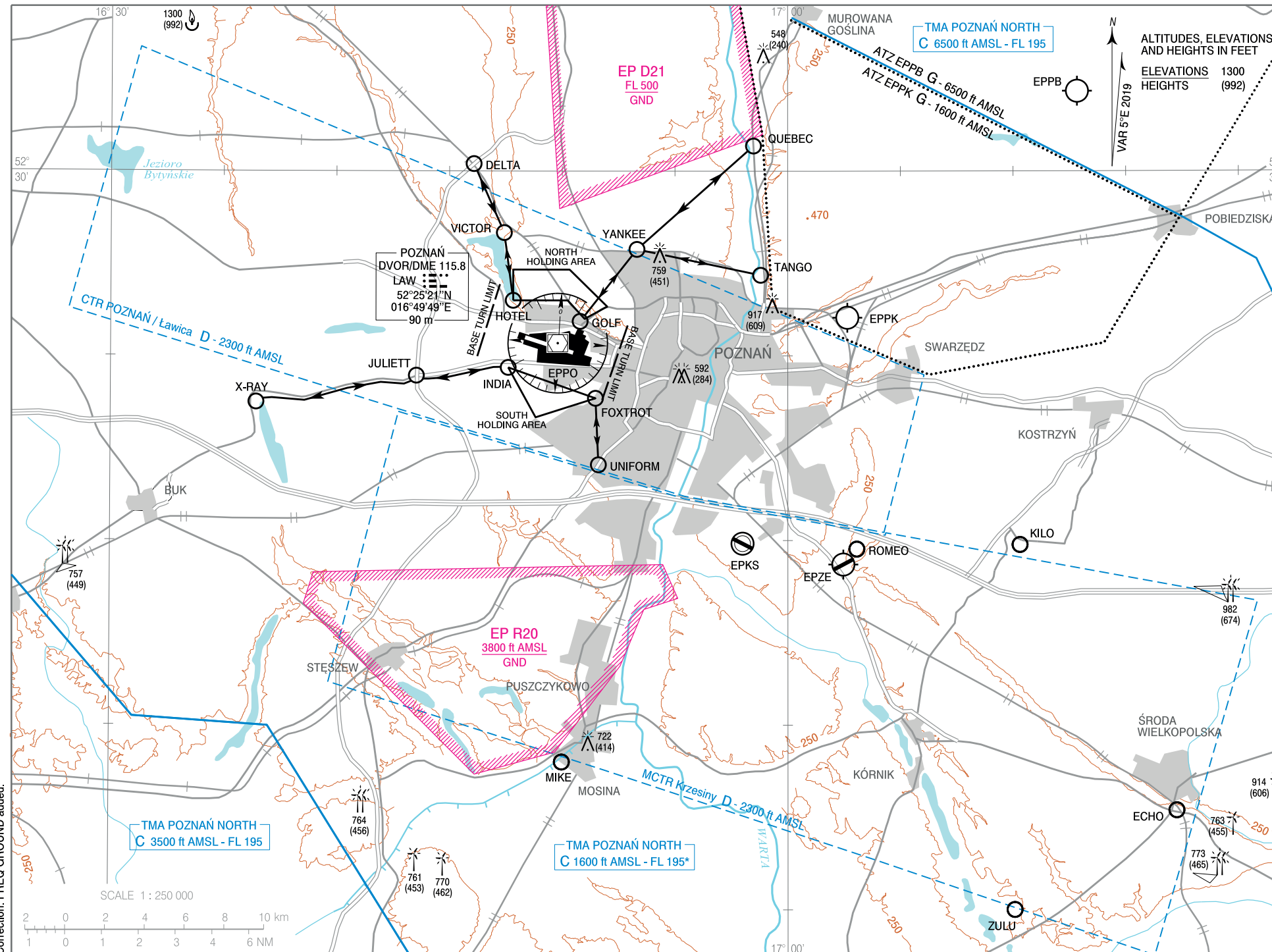


AERODROME ELEV 308 ft
HEIGHTS RELATED TO AD ELEV

| | |
|-----------------|---------|
| Poznań APPROACH | 128.925 |
| Poznań GROUND | 124.140 |
| Poznań TOWER | 119.980 |

VFR
ARRIVAL AND DEPARTURE ROUTES

Poznań-Ławica



Correction: FREQ GROUND added.

* excluding CTR POZNAŃ / Ławica and MCTR Krzesiny

| POINT ID | POINT ID FPL | LATITUDE | LONGITUDE | DESCRIPTION |
|----------|--------------|------------|-------------|---|
| DELTA | EPPOD | 52°30'12"N | 016°46'05"E | Ring road overpass over the railway |
| ECHO | EPKSE | 52°12'41"N | 017°17'09"E | Level crossing in Kijewo town |
| FOXTROT | EPPOF | 52°23'51"N | 016°51'29"E | Football stadium |
| GOLF | EPPOG | 52°25'56"N | 016°50'48"E | Pale green warehouse |
| HOTEL | EPPOH | 52°26'30"N | 016°47'50"E | Hotel on south end of Kierskie Lake |
| INDIA | EPPOI | 52°24'41"N | 016°47'37"E | Aviation radar |
| JULIETT | EPPOJ | 52°24'28"N | 016°43'33"E | Road junction Poznań-Ławica |
| KILO | EPKSK | 52°19'53"N | 017°10'16"E | Warehouses in Kleszczewo town |
| MIKE | EPKSM | 52°14'00"N | 016°50'00"E | Mosina town |
| QUEBEC | EPPOQ | 52°30'41"N | 016°58'29"E | Spatial Orientation Park at Owiriska |
| ROMEO | EPKSR | 52°19'46"N | 017°03'03"E | Roundabout near Żerniki town |
| TANGO | EPPOT | 52°27'11"N | 016°58'48"E | Sewage treatment plant in Koziegłowy town |
| UNIFORM | EPPOU | 52°22'03"N | 016°51'37"E | Causeway between Nowakowskiego ponds |
| VICTOR | EPPOV | 52°28'20"N | 016°47'26"E | North-east part of Kierskie Lake |
| X-RAY | EPPOX | 52°23'45"N | 016°36'27"E | North end of Niepruszewskie Lake |
| YANKEE | EPPOY | 52°27'53"N | 016°53'19"E | Narutowicz overpass |
| ZULU | EPK SZ | 52°10'00"N | 017°10'00"E | Zaniemiśl village |

Note: Points VICTOR, HOTEL, GOLF, JULIETT, INDIA and FOXTROT should be reported only when required for POZNAŃ TWR clearance.

See AIP Poland AD 2 EPPO