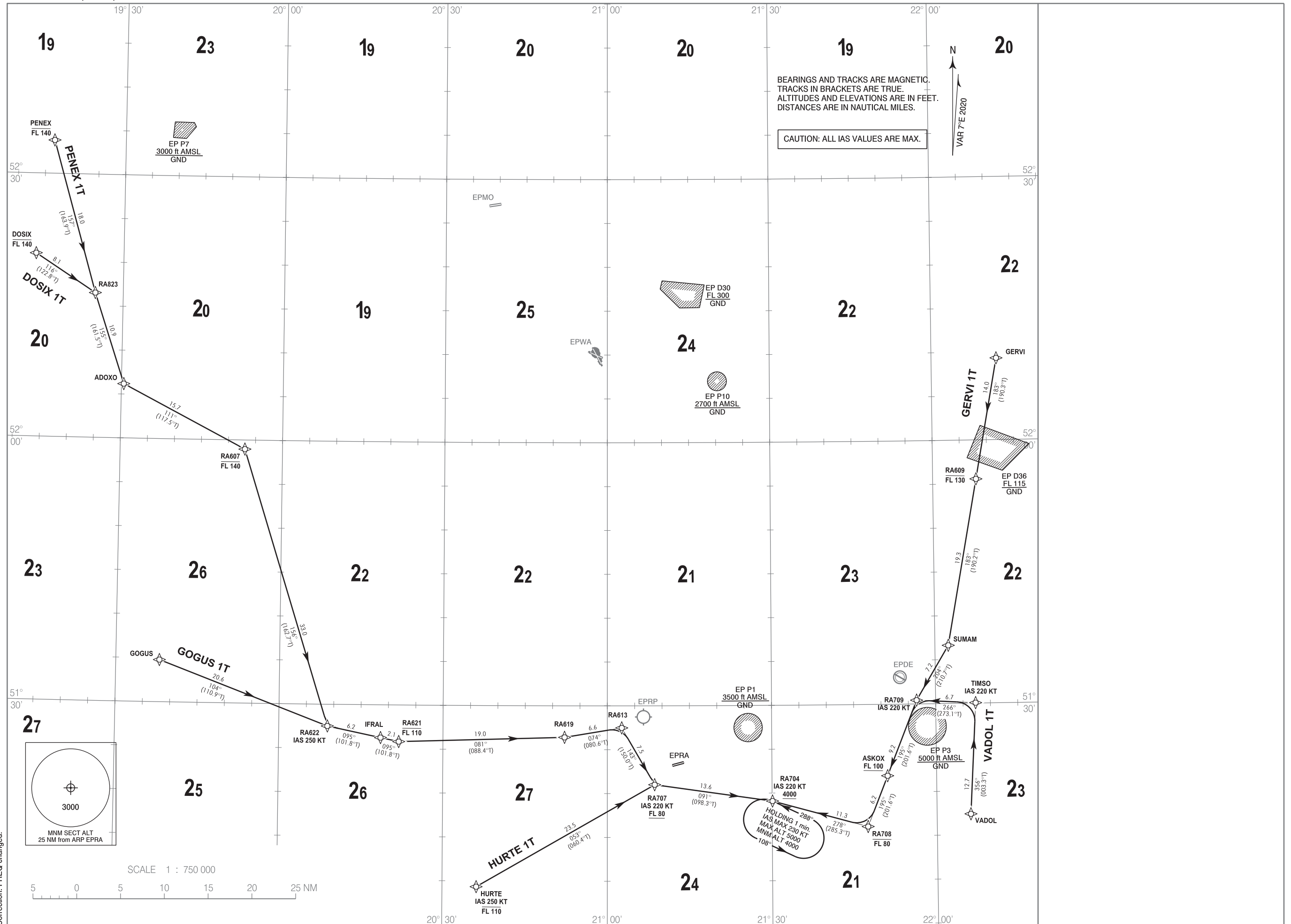


RNP 1 (GNSS)
STANDARD ARRIVAL CHART
INSTRUMENT (STAR) - ICAO

TRANSITION ALTITUDE 6500

| | | | |
|--------------------|------------------------------------|-----------------|---------|
| Warszawa APPROACH | 125.055, 128.805, 129.380, 135.930 | Radom TOWER | 118.430 |
| MIL Radom APPROACH | 128.675 | MIL Radom TOWER | 118.430 |

Warszawa - Radom
RWY 25



Correction: FREQ changed.

**RNP 1 (GNSS)
STANDARD ARRIVAL CHART
INSTRUMENT (STAR) - ICAO**

**Warszawa-Radom
RWY 25**

HURTE 1T

| SEQUENCE NUMBER | PATH TERMINATOR | WAYPOINT IDENTIFIER | COURSE / TRACK °M (°T) | DISTANCE (NM) | ALTITUDE | SPEED (kt) | NAV SPEC |
|-----------------|-----------------|---------------------|------------------------|---------------|----------|------------|----------|
| 001 | IF | HURTE | - | - | -FL110 | -250 | RNP 1 |
| 002 | TF | RA707 | 053 (060.4) | 23.48 | +FL80 | -220 | RNP 1 |
| 003 | TF | RA704 | 091 (098.3) | 13.59 | +4000 ft | -220 | RNP 1 |

GOGUS 1T

| SEQUENCE NUMBER | PATH TERMINATOR | WAYPOINT IDENTIFIER | COURSE / TRACK °M (°T) | DISTANCE (NM) | ALTITUDE | SPEED (kt) | NAV SPEC |
|-----------------|-----------------|---------------------|------------------------|---------------|----------|------------|----------|
| 001 | IF | GOGUS | - | - | - | - | RNP 1 |
| 002 | TF | RA622 | 104 (110.9) | 20.63 | - | -250 | RNP 1 |
| 003 | TF | IFRAL | 095 (101.8) | 6.21 | - | - | RNP 1 |
| 004 | TF | RA621 | 095 (101.8) | 2.13 | -FL110 | - | RNP 1 |
| 005 | TF | RA619 | 081 (088.4) | 18.95 | - | - | RNP 1 |
| 006 | TF | RA613 | 074 (080.6) | 6.62 | - | - | RNP 1 |
| 007 | TF | RA707 | 143 (150.0) | 7.50 | +FL80 | -220 | RNP 1 |
| 008 | TF | RA704 | 091 (098.3) | 13.59 | +4000 ft | -220 | RNP 1 |

PENEX 1T

| SEQUENCE NUMBER | PATH TERMINATOR | WAYPOINT IDENTIFIER | COURSE / TRACK °M (°T) | DISTANCE (NM) | ALTITUDE | SPEED (kt) | NAV SPEC |
|-----------------|-----------------|---------------------|------------------------|---------------|----------|------------|----------|
| 001 | IF | PENEX | - | - | -FL140 | - | RNP 1 |
| 002 | TF | RA823 | 157 (163.9) | 18.02 | - | - | RNP 1 |
| 003 | TF | ADOXO | 155 (161.5) | 10.89 | - | - | RNP 1 |
| 004 | TF | RA607 | 111 (117.5) | 15.73 | -FL140 | - | RNP 1 |
| 005 | TF | RA622 | 156 (162.7) | 32.98 | - | -250 | RNP 1 |
| 006 | TF | IFRAL | 095 (101.8) | 6.21 | - | - | RNP 1 |
| 007 | TF | RA621 | 095 (101.8) | 2.13 | -FL110 | - | RNP 1 |
| 008 | TF | RA619 | 081 (088.4) | 18.95 | - | - | RNP 1 |
| 009 | TF | RA613 | 074 (080.6) | 6.62 | - | - | RNP 1 |
| 010 | TF | RA707 | 143 (150.0) | 7.50 | +FL80 | -220 | RNP 1 |
| 011 | TF | RA704 | 091 (098.3) | 13.59 | +4000 ft | -220 | RNP 1 |

DOSIX 1T

| SEQUENCE NUMBER | PATH TERMINATOR | WAYPOINT IDENTIFIER | COURSE / TRACK °M (°T) | DISTANCE (NM) | ALTITUDE | SPEED (kt) | NAV SPEC |
|-----------------|-----------------|---------------------|------------------------|---------------|----------|------------|----------|
| 001 | IF | DOSIX | - | - | -FL140 | - | RNP 1 |
| 002 | TF | RA823 | 116 (122.8) | 8.14 | - | - | RNP 1 |
| 003 | TF | ADOXO | 155 (161.5) | 10.89 | - | - | RNP 1 |
| 004 | TF | RA607 | 111 (117.5) | 15.73 | -FL140 | - | RNP 1 |
| 005 | TF | RA622 | 156 (162.7) | 32.98 | - | -250 | RNP 1 |
| 006 | TF | IFRAL | 095 (101.8) | 6.21 | - | - | RNP 1 |
| 007 | TF | RA621 | 095 (101.8) | 2.13 | -FL110 | - | RNP 1 |
| 008 | TF | RA619 | 081 (088.4) | 18.95 | - | - | RNP 1 |
| 009 | TF | RA613 | 074 (080.6) | 6.62 | - | - | RNP 1 |
| 010 | TF | RA707 | 143 (150.0) | 7.50 | +FL80 | -220 | RNP 1 |
| 011 | TF | RA704 | 091 (098.3) | 13.59 | +4000 ft | -220 | RNP 1 |

GERVI 1T

| SEQUENCE NUMBER | PATH TERMINATOR | WAYPOINT IDENTIFIER | COURSE / TRACK °M (°T) | DISTANCE (NM) | ALTITUDE | SPEED (kt) | NAV SPEC |
|-----------------|-----------------|---------------------|------------------------|---------------|----------|------------|----------|
| 001 | IF | GERVI | - | - | - | - | RNP 1 |
| 002 | TF | RA609 | 183 (190.3) | 14.00 | -FL130 | - | RNP 1 |
| 003 | TF | SUMAM | 183 (190.2) | 19.26 | - | - | RNP 1 |
| 004 | TF | RA709 | 204 (210.7) | 7.23 | - | -220 | RNP 1 |
| 005 | TF | ASKOX | 195 (201.6) | 9.24 | +FL100 | - | RNP 1 |
| 006 | TF | RA708 | 195 (201.6) | 6.21 | -FL80 | - | RNP 1 |
| 007 | TF | RA704 | 278 (285.3) | 11.30 | +4000 ft | -220 | RNP 1 |

VADOL 1T

| SEQUENCE NUMBER | PATH TERMINATOR | WAYPOINT IDENTIFIER | COURSE / TRACK °M (°T) | DISTANCE (NM) | ALTITUDE | SPEED (kt) | NAV SPEC |
|-----------------|-----------------|---------------------|------------------------|---------------|----------|------------|----------|
| 001 | IF | VADOL | - | - | - | - | RNP 1 |
| 002 | TF | TIMSO | 356 (003.3) | 12.70 | - | -220 | RNP 1 |
| 003 | TF | RA709 | 266 (273.1) | 6.74 | - | -220 | RNP 1 |
| 004 | TF | ASKOX | 195 (201.6) | 9.24 | +FL100 | - | RNP 1 |
| 005 | TF | RA708 | 195 (201.6) | 6.21 | -FL80 | - | RNP 1 |
| 006 | TF | RA704 | 278 (285.3) | 11.30 | +4000 | -220 | RNP 1 |

| WAYPOINT IDENTIFIER | COORDINATES | |
|---------------------|--------------|---------------|
| | | |
| ADOXO | 52 06 11.0 N | 019 30 26.0 E |
| ASKOX | 51 21 51.1 N | 021 51 04.6 E |
| DOSIX | 52 20 53.0 N | 019 13 39.0 E |
| GERVI | 52 09 19.0 N | 022 12 03.0 E |
| GOGUS | 51 34 48.0 N | 019 37 59.0 E |
| HURTE | 51 09 20.4 N | 020 36 12.0 E |
| IFRAL | 51 26 15.5 N | 020 18 36.0 E |
| PENEX | 52 33 47.0 N | 019 16 38.0 E |
| RA607 | 51 58 57.5 N | 019 53 03.1 E |
| RA609 | 51 55 33.7 N | 022 07 58.9 E |
| RA613 | 51 27 29.2 N | 021 02 37.8 E |
| RA619 | 51 26 24.2 N | 020 52 11.5 E |
| RA621 | 51 25 49.4 N | 020 21 55.6 E |
| RA622 | 51 27 31.2 N | 020 08 52.5 E |
| RA704 | 51 19 05.1 N | 021 30 04.4 E |
| RA707 | 51 21 00.1 N | 021 08 37.5 E |
| RA708 | 51 16 05.2 N | 021 47 26.0 E |
| RA709 | 51 30 25.5 N | 021 56 31.4 E |
| RA823 | 52 16 29.6 N | 019 24 48.6 E |
| SUMAM | 51 36 38.0 N | 022 02 27.0 E |
| TIMSO | 51 30 03.0 N | 022 07 18.0 E |
| VADOL | 51 17 23.0 N | 022 06 09.0 E |