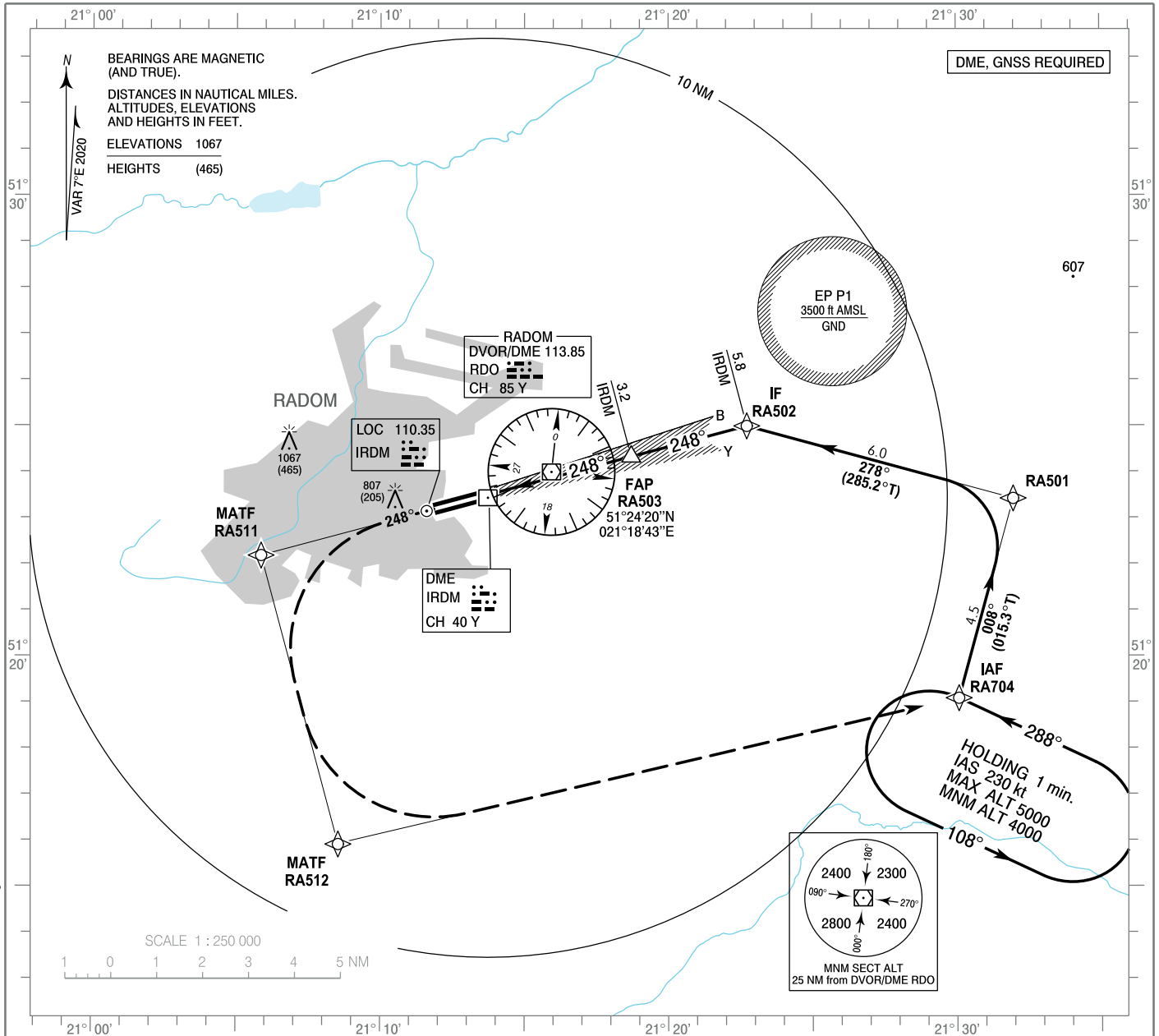


**INSTRUMENT
APPROACH
CHART - ICAO**

AERODROME ELEV 625 ft
THR RWY 25 ELEV 602 ft
HEIGHTS RELATED TO THR RWY 25

Radom TOWER	118.430
MIL Radom APPROACH	128.675
MIL Radom TOWER	118.430

**Warszawa - Radom
ILS
RWY 25 (CAT A/B/C/D)**

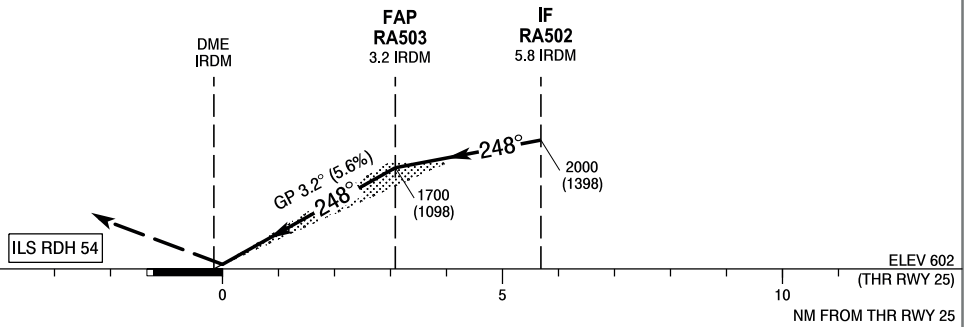


Correction: Editorial changes.

MISSED APPROACH

Climb on course 248° to RA511, then turn left to RA512 and continue to RA704 climbing to 4000 (3398). At 4000 (3398) contact ATC for further instructions. Turns limited to 220 kt IAS max.

TRANSITION ALTITUDE 6500



OCA (OCH)					Distance FAP - RW25 3.1 NM								
Cat. of ACFT	Cat. I	A	B	C	D	Speed	kt	80	100	120	140	160	180
		Straight-in		820 (218)	832 (230)	840 (238)	851 (249)	Time	min : s	2 : 19	1 : 52	1 : 33	1 : 20
						Rate of descent	ft / min	450	560	670	790	900	1010
Circling (OCH AAL)*					1110 (485)	1120 (495)	1440 (815)	1440 (815)	Final approach distance/altitude (height)				
*Circling south of aerodrome only.							Distance	3	2	1			
							Altitude (height)	1671 (1069)	1331 (729)	992 (390)			

**Warszawa-Radom
 ILS
 RWY 25 (CAT A/B/C/D)**

EPRA RNP RWY 25 INITIAL TRANSITION FROM RA704

SEQUENCE NUMBER	PATH TERMINATOR	WAYPOINT IDENTIFIER	FLY - OVER	COURSE/TRACK °M (°T)	DISTANCE (NM)	TURN DIRECTION	ALTITUDE (FT)	SPEED (kt)	VPA/TCH	NAV SPEC
001	IF	RA704	-	-	-	-	+4000	-220	-	RNP 1
002	TF	RA501	-	008 (015.31)	4.50	-	+3000	-220	-	RNP 1
003	TF	RA502	-	278 (285.19)	6.00	L	+2000	-185	-	RNP 1

EPRA RNP RWY 25 MISSED APPROACH

SEQUENCE NUMBER	PATH TERMINATOR	WAYPOINT IDENTIFIER	FLY - OVER	COURSE/TRACK °M (°T)	DISTANCE (NM)	TURN DIRECTION	ALTITUDE (FT)	SPEED (kt)	VPA/TCH	NAV SPEC
001	-	RWY 25	-	-	-	-	-	-	-	RNP 1
002	CF	RA511	-	248 (254.97)	5.24	L	-	-220	-	RNP 1
003	TF	RA512	-	158 (165.00)	6.50	L	-	-220	-	RNP 1
004	TF	RA704	-	070 (076.92)	13.88	-	+4000	-220	-	RNP 1

WAYPOINT IDENTIFIER	COORDINATES		FIX RORMATION	
RA704 (IAF)	51 19 05.1 N	021 30 04.4 E	-	-
RA501	51 23 25.2 N	021 31 58.0 E	-	-
RA502 (IF)	51 24 59.7 N	021 22 43.4 E	255.04° GEO (248° MAG) LOC IRDM	5.84 NM DME IRDM
RA503 (FAP)	51 24 19.8 N	021 18 42.5 E	255.04° GEO (248° MAG) LOC IRDM	3.24 NM DME IRDM
RWY 25	51 23 32.3 N	021 13 56.8 E	-	-
RA511 (MATF)	51 22 11.1 N	021 05 52.1 E	-	-
RA512 (MATF)	51 15 54.9 N	021 08 33.1 E	-	-