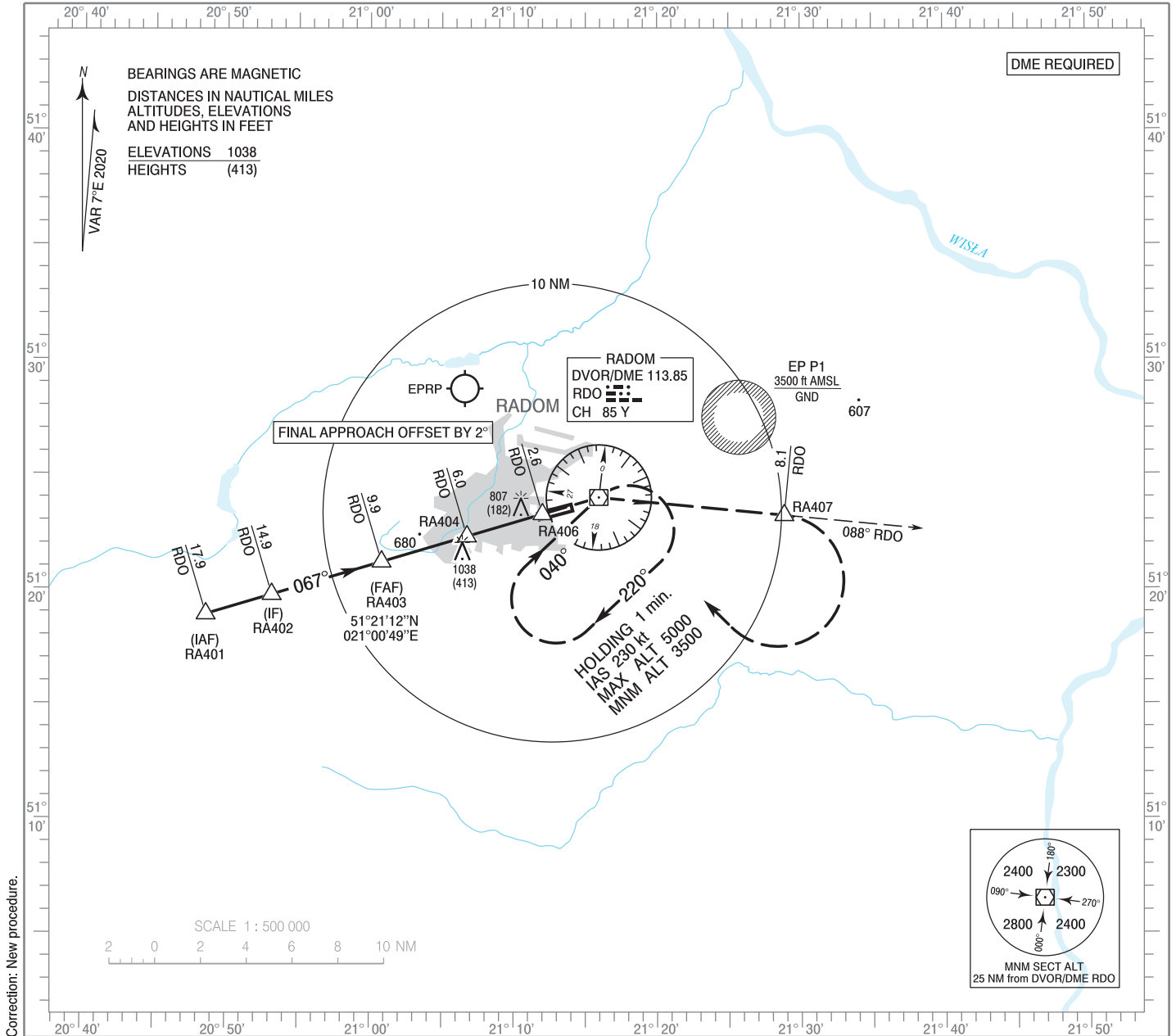


**INSTRUMENT  
APPROACH  
CHART - ICAO**

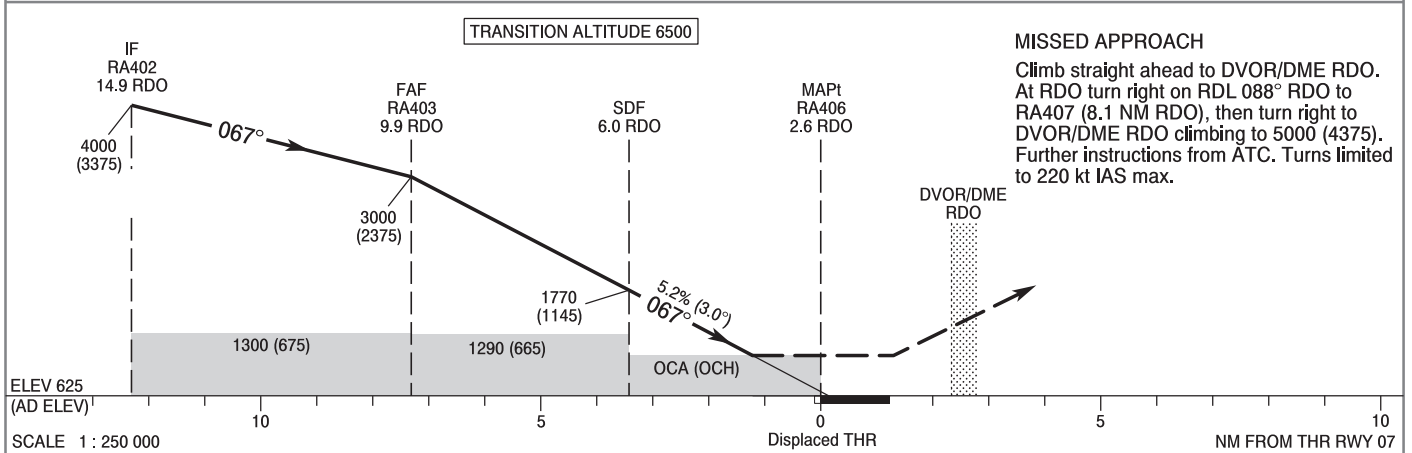
AERODROME ELEV 625 ft  
THR RWY 07 ELEV 620 ft  
HEIGHTS RELATED TO AD ELEV

Radom TOWER	118.430
MIL Radom APPROACH	128.675
MIL Radom TOWER	118.430

**Warszawa - Radom  
VOR  
RWY 07 (CAT A/B/C/D)**



Correction: New procedure.



OCA (OCH)					Distance FAF - MAPt 7.3 NM							
Cat. of ACFT	A	B	C	D	Speed	kt	80	100	120	140	160	180
Straight - in	1060 (435)	1060 (435)	1060 (435)	1060 (435)	Time	min : s	5 : 30	4 : 24	3 : 40	3 : 09	2 : 45	2 : 27
					Rate of descent	ft / min	420	530	630	740	840	950
					Final approach distance/altitude (height)							
Circling*	1110 (485)	1120 (495)	1440 (815)	1440 (815)	Distance	7	6	5	4			
*Circling south of aerodrome only					Altitude (height)	2080 (1455)	1770 (1145)	1450 (825)	1130 (505)			

INSTRUMENT  
APPROACH  
CHART - ICAOWarszawa - Radom  
VOR  
RWY 07 (CAT A/B/C/D)

FIX / POINT	LATITUDE	LONGITUDE	FIX FORMATION	
IAF RA401	51°18'54.1"N	020°48'35.9"E	253.60° GEO (247° MAG) DVOR RDO	17.89 NM DME RDO
IF RA402	51°19'45.8"N	020°53'10.7"E	253.60° GEO (247° MAG) DVOR RDO	14.89 NM DME RDO
FAF RA403	51°21'11.6"N	021°00'49.0"E	253.60° GEO (247° MAG) DVOR RDO	9.89 NM DME RDO
SDF	51°22'18.0"N	021°06'45.5"E	253.60° GEO (247° MAG) DVOR RDO	6.00 NM DME RDO
MAP <sub>t</sub> RA406	51°23'16.4"N	021°12'00.6"E	253.60° GEO (247° MAG) DVOR RDO	2.57 NM DME RDO
DVOR/DME RDO	51°23'59.9"N	021°15'56.6"E		
RA407	51°23'13.0"N	021°28'51.5"E	095.44° GEO (088° MAG) DVOR RDO	8.13 NM DME RDO
Final approach descent angle: 3.00°				