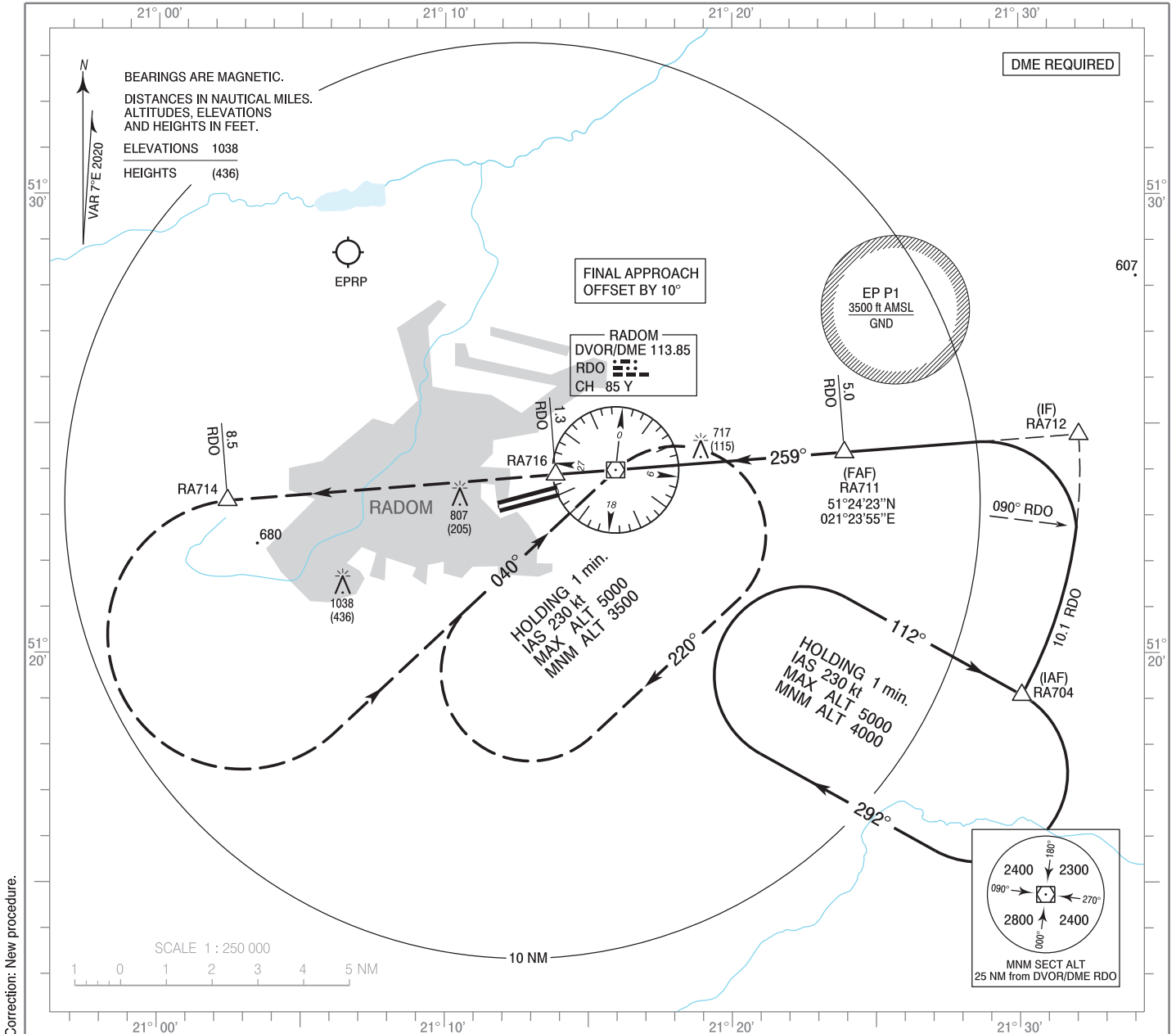


**INSTRUMENT
APPROACH
CHART - ICAO**

AERODROME ELEV 625 ft
THR RWY 25 ELEV 602 ft
HEIGHTS RELATED TO THR RWY 25

Radom TOWER	118.430
MIL Radom APPROACH	128.675
MIL Radom TOWER	118.430

**Warszawa - Radom
VOR
RWY 25 (CAT A/B/C/D)**

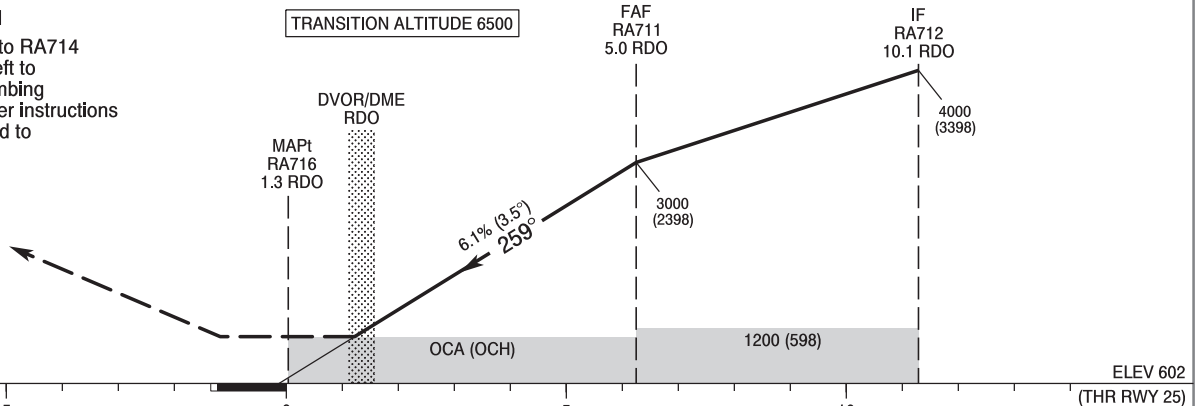


Correction: New procedure.

MISSED APPROACH

Climb straight ahead to RA714 (8.5 NM RDO), turn left to DVOR/DME RDO climbing to 5000 (4398). Further instructions from ATC. Turn limited to 220 kt IAS max.

TRANSITION ALTITUDE 6500



SCALE 1 : 250 000

NM FROM THR RWY 25

Cat. of ACFT	OCA (OCH)				Distance FAF - MAPt 6.3 NM							
	A	B	C	D	Speed	kt	80	100	120	140	160	180
Straight - in	1000 (398)	1050 (448)	1080 (478)	1110 (508)	Time	min : s	4 : 44	3 : 47	3 : 09	2 : 42	2 : 22	2 : 06
					Rate of descent	ft / min	490	620	740	870	990	1110
Circling (OCH AAL)*					Final approach distance/altitude (height)							
					Distance		5	4	3	2		
					Altitude (height)		3010 (2408)	2630 (2028)	2260 (1658)	1890 (1288)		

*Circling south of aerodrome only.

**INSTRUMENT
APPROACH
CHART - ICAO**

**Warszawa - Radom
VOR
RWY 25 (CAT A/B/C/D)**

FIX / POINT	LATITUDE	LONGITUDE	FIX FORMATION	
IAF RA704	51°19'05.1"N	021°30'04.4"E	118.96° GEO (112° MAG) DVOR RDO	10.13 NM DME RDO
IF RA712	51°24'45.9"N	021°32'04.6"E	085.55° GEO (079° MAG) DVOR RDO	10.13 NM DME RDO
FAF RA711	51°24'22.9"N	021°23'54.6"E	085.55° GEO (079° MAG) DVOR RDO	5.00 NM DME RDO
MAPt RA716	51°23'53.8"N	021°13'51.0"E	265.55° GEO (259° MAG) DVOR RDO	1.32 NM DME RDO
RA714	51°23'19.6"N	021°02'25.4"E	265.55° GEO (259° MAG) DVOR RDO	8.50 NM DME RDO
DVOR/DME RDO	51°23'59.9"N	021°15'56.6"E		
Final approach descent angle: 3.50°				