

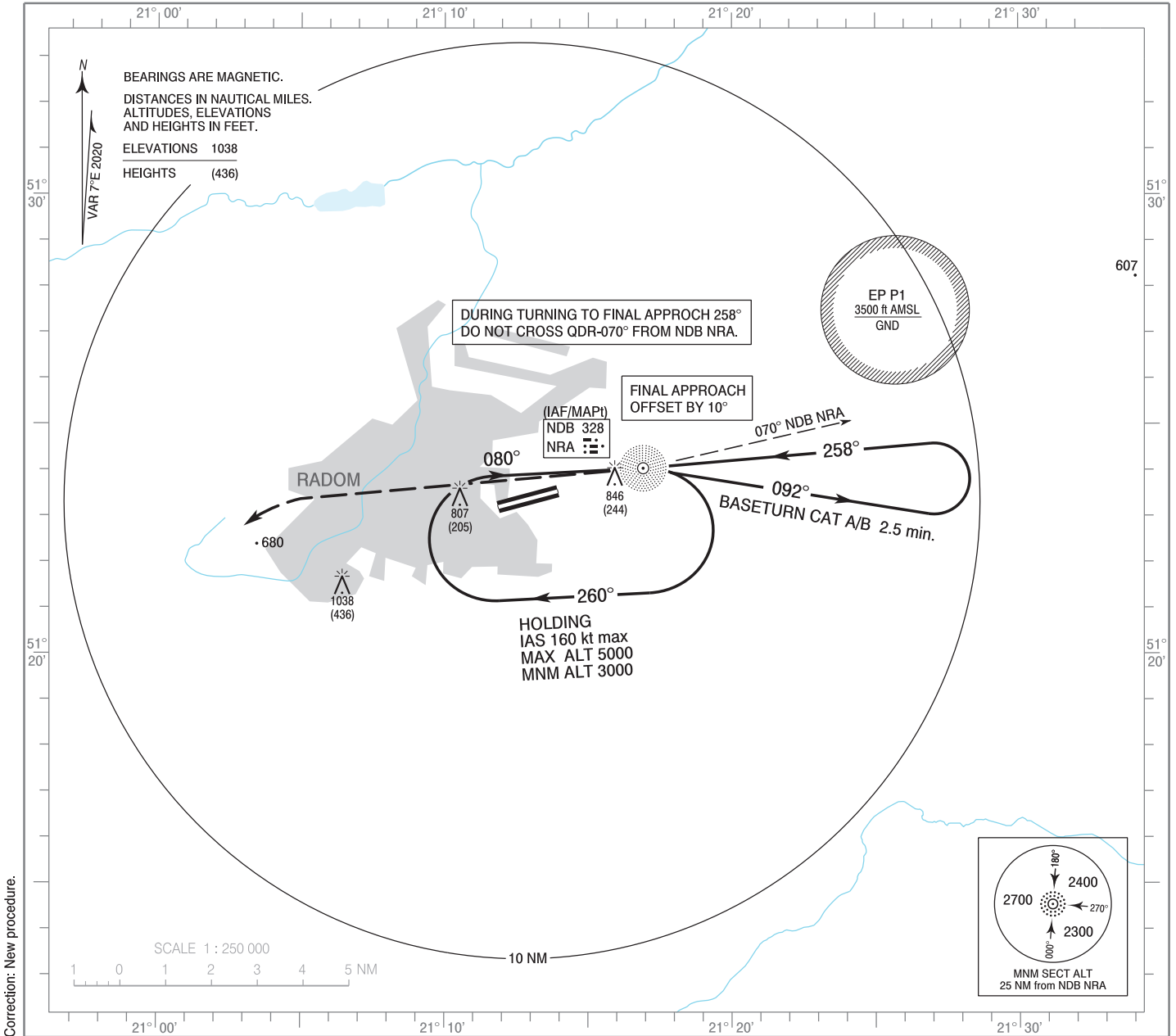
**INSTRUMENT  
APPROACH  
CHART - ICAO**

AERODROME ELEV 625 ft  
THR RWY 25 ELEV 602 ft  
HEIGHTS RELATED TO THR RWY 25

MIL Radom APPROACH 128.675  
MIL Radom TOWER 118.430  
Radom TOWER 118.430

**Warszawa - Radom  
NDB y  
RWY 25 (CAT A/B)**

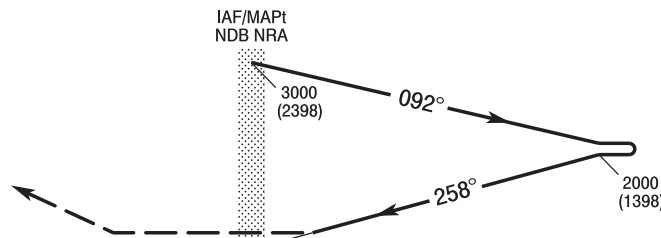
**MILITARY USE ONLY**



**MISSED APPROACH**

Climb straight ahead to 2000 (1398),  
then turn left to NDB NRA  
climbing to 3000 (2398)  
and follow ATC instructions.

TRANSITION ALTITUDE 6500



		OCA (OCH)											
Cat. of ACFT		A	B										
Straight - in		1152 (550)	1152 (550)										
Circling* (OCH AAL)		1175 (550)	1175 (550)										

\*Circling south of aerodrome only.

**INSTRUMENT  
APPROACH  
CHART - ICAO**

**Warszawa - Radom  
NDB y  
RWY 25 (CAT A/B)**

FIX / POINT	LATITUDE	LONGITUDE	FIX FORMATION	
IAF NDB NRA	51°24'02.3"N	021°16'54.8"E		
MAPt NDB NRA	51°24'02.3"N	021°16'54.8"E		