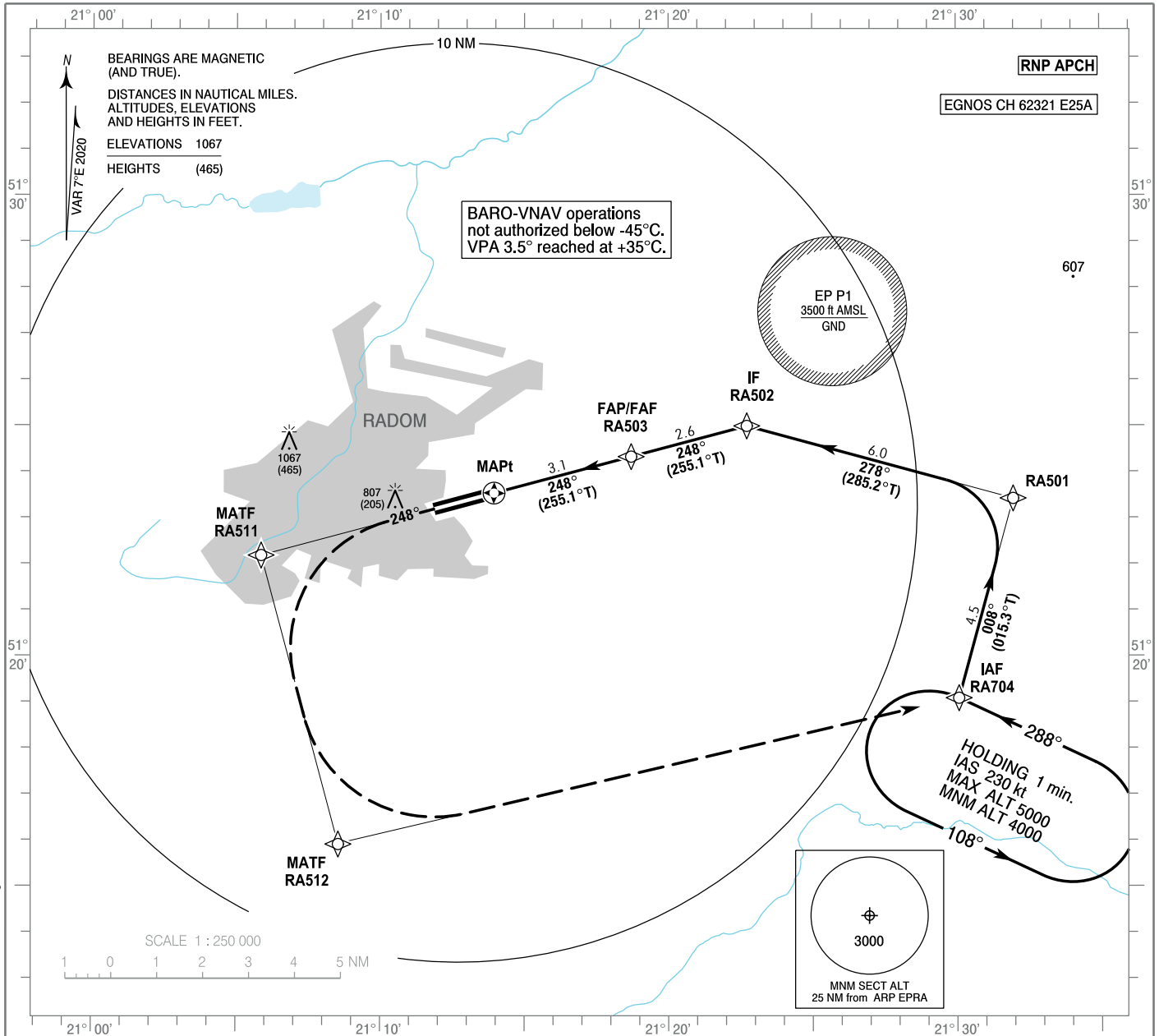


**INSTRUMENT
APPROACH
CHART - ICAO**

AERODROME ELEV 625 ft
THR RWY 25 ELEV 602 ft
HEIGHTS RELATED TO THR RWY 25

Radom TOWER	118.430
MIL Radom APPROACH	128.675
MIL Radom TOWER	118.430

Warszawa - Radom
RNP
RWY 25 (CAT A/B/C/D)

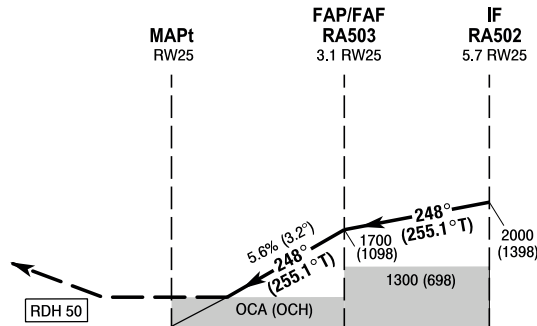


Correction: Editorial changes.

MISSED APPROACH

Climb on course 248° to RA511, then turn left to RA512 and continue to RA704 climbing to 4000 (3398). At 4000 (3398) contact ATC for further instructions. Turns limited to 220 kt IAS max.

TRANSITION ALTITUDE 6500



ELEV 602 (THR RWY 25)
SCALE 1:250 000
NM FROM THR RWY 25

OCA (OCH)					Distance FAF - MAPt 3.1 NM								
Cat. of ACFT	A	B	C	D	Speed	kt	80	100	120	140	160	180	
Straight - in	LPV	820 (218)	832 (230)	840 (238)	851 (249)	Time	min : s	2 : 19	1 : 52	1 : 33	1 : 20	1 : 10	1 : 02
	LNAV / VNAV	840 (238)	850 (248)	860 (258)	870 (268)	Rate of descent	ft / min	450	560	670	790	900	1010
	LNAV	970 (368)	970 (368)	970 (368)	970 (368)		Final approach distance/altitude (height)						
Circling (OCH AAL)*	1110 (485)	1120 (495)	1440 (815)	1440 (815)	Distance	3	2	1					
*Circling south of aerodrome only.					Altitude (height)	1671 (1069)	1331 (729)	992 (390)					

STRONA WOLNA

INTENTIONALLY LEFT BLANK

**Warszawa-Radom
RNP
RWY 25 (CAT A/B/C/D)**

EPRA RNP RWY 25 FROM RA704

SEQUENCE NUMBER	PATH TERMINATOR	WAYPOINT IDENTIFIER	FLY - OVER	COURSE/TRACK °M (°T)	DISTANCE (NM)	TURN DIRECTION	ALTITUDE	SPEED (kt)	VPA/TCH	NAV SPEC
001	IF	RA704	-	-	-	-	+4000 ft	-220	-	RNP APCH
002	TF	RA501	-	008 (015.31)	4.50	L	+3000 ft	-220	-	RNP APCH
003	TF	RA502	-	278 (285.19)	6.00	L	+2000 ft	-185	-	RNP APCH
004	TF	RA503	-	248 (255.14)	2.60	-	+1700 ft	-	-	RNP APCH
005	TF	RW25	Y	248 (255.07)	3.09	-	@652 ft	-	-3.2/50	RNP APCH
006	CF	RA511	-	248 (254.97)	5.24	L	-	-220	-	RNP APCH
007	TF	RA512	-	158 (165.00)	6.50	L	-	-220	-	RNP APCH
008	TF	RA704	-	070 (076.92)	13.88	-	+4000 ft	-220	-	RNP APCH

WAYPOINT IDENTIFIER	COORDINATES	
RA704 (IAF, MAHF)	51 19 05.1 N	021 30 04.4 E
RA501	51 23 25.2 N	021 31 58.0 E
RA502 (IF)	51 24 59.7 N	021 22 43.4 E
RA503 (FAP/FAF)	51 24 19.8 N	021 18 42.5 E
RW25 (MAPt)	51 23 32.3 N	021 13 56.8 E
RA511 (MATF)	51 22 11.1 N	021 05 52.1 E
RA512 (MATF)	51 15 54.9 N	021 08 33.1 E

SBAS FAS Data Block Coding Data

EPRA RNP RWY 25	
Input Data	
Parameters	Values
Operation Type:	0
SBAS Provider:	1 (EGNOS)
Airport Identifier:	EPRA
Runway:	25
Runway Letter:	0 (None)
Approach Performance Designator:	0
Route Indicator:	
Reference Path Data Selector:	0
Reference Path Identifier:	E25A
LTP/FTP Latitude:	512332.3030N
LTP/FTP Longitude:	0211356.8010E
LTP/FTP Ellipsoidal Height (metres):	217.4
FPAP Latitude:	512311.4480N
Delta FPAP Latitude (seconds):	-20.8550
FPAP Longitude:	0211151.8780E
Delta FPAP Longitude (seconds):	-124.9230
Threshold Crossing Height:	50.0
TCH Units Selector:	0 (feet)
Glidepath Angle (degrees):	3.20
Course Width (metres):	105.00
Length Offset (metres):	0
HAL (metres):	40.0
VAL (metres):	35.0

Output Data	
Data Block	10 01 12 10 05 19 00 00 01 35 32 05 9E 20 0E 16 82 AA 1C 09 7E 1C 12 5D FF 0A 30 FC F4 01 40 01 64 00 C8 AF 68 9F 0A 55
Calculated CRC Value	689F0A55

Required Additional Data (not CRC wrapped)	
ICAO Code	RA
LTP/FTP Orthometric Height (metres)	183.4