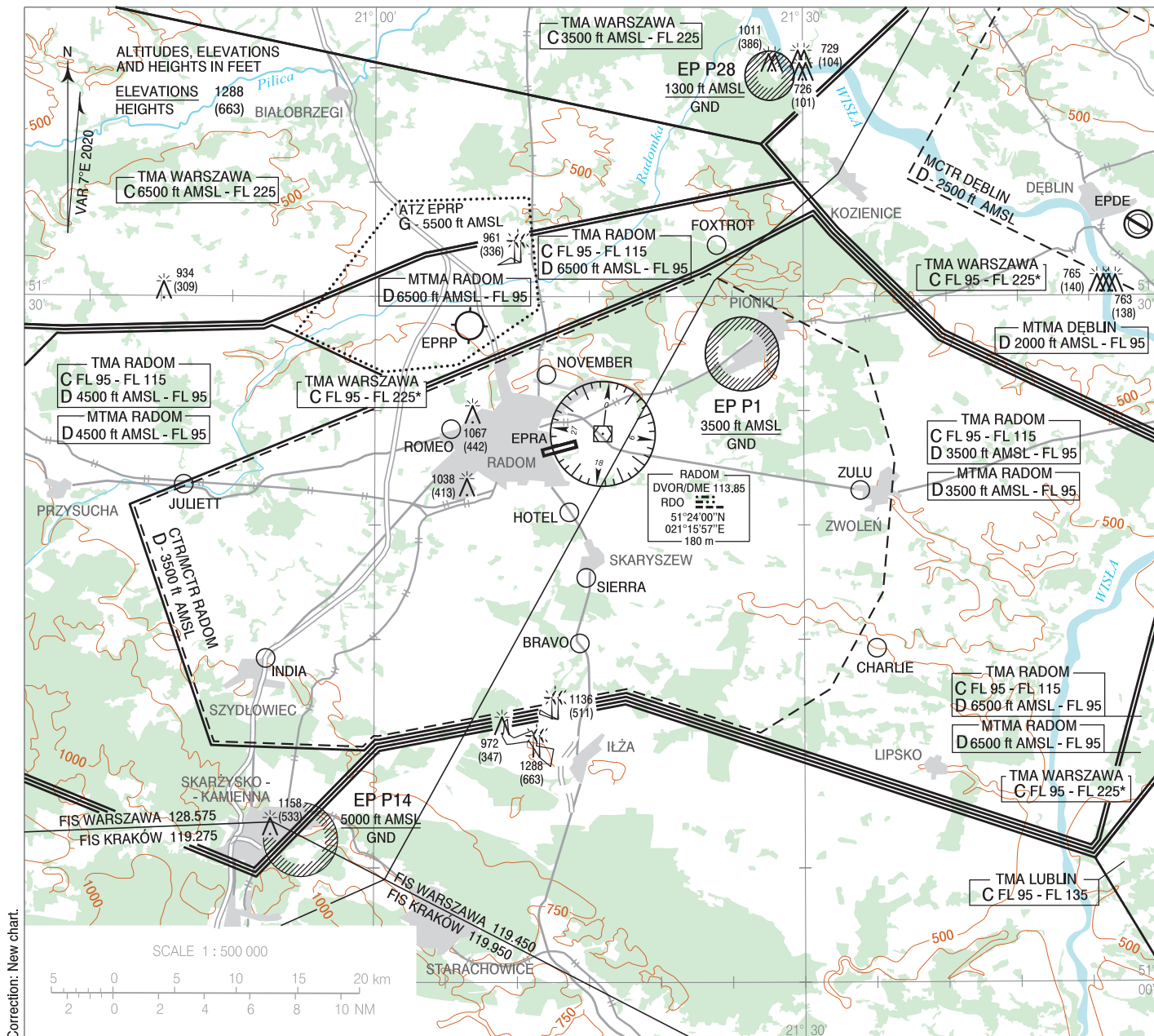


**VISUAL
OPERATION
CHART**

**AERODROME ELEV 625 ft
HEIGHTS RELATED TO AD ELEV**

Radom TOWER 118.430
MIL Radom APPROACH 128.675
MIL Radom TOWER 118.430

Warszawa - Radom



Correction: New chart.

* Excluding TMA RADOM

POINT ID	LATITUDE	LONGITUDE	POINT DESCRIPTION
BRAVO	51°14'50"N	021°14'20"E	Ponds in Bujak
CHARLIE	51°14'37"N	021°35'03"E	Asphalt plant in Ciepeliów
FOXTROT	51°32'15"N	021°23'56"E	Concrete plant in Przejazd
HOTEL	51°20'34"N	021°13'36"E	Inn in Makowiec
INDIA	51°14'10"N	020°52'26"E	S7 and 727 road junction in Szydłowiec
JULIETT	51°21'46"N	020°46'39"E	Petrol station in western part of Wieniawa
NOVEMBER	51°26'35"N	021°12'00"E	Heating plant "Północ" in Radom
ROMEO	51°24'12"N	021°05'20"E	Detention centre in Radom
SIERRA	51°17'42"N	021°14'47"E	Petrol station at national road No. 9, south of Skaryszew
ZULU	51°21'31"N	021°33'56"E	Zwoleń - Fuel station at the junction of national road No. 12 and road No.787 (roundabout)

See AIP Poland AD 2 EPRA