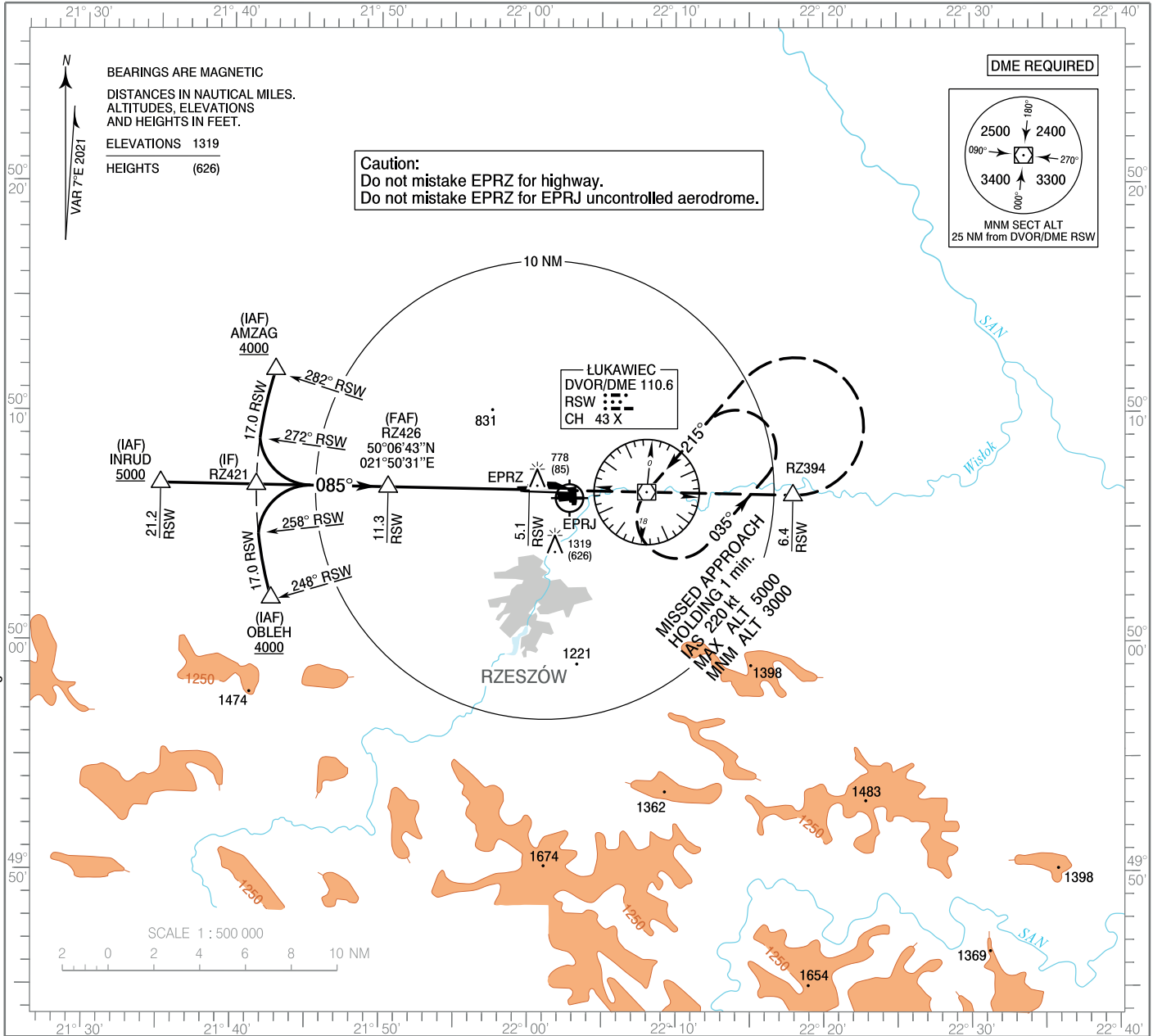


**INSTRUMENT
APPROACH
CHART - ICAO**

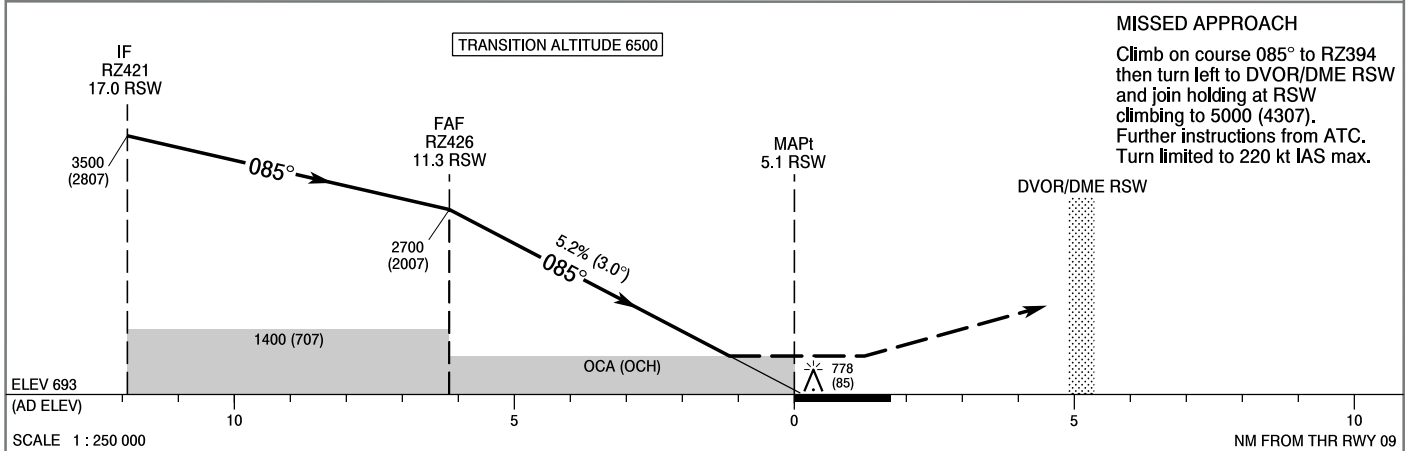
AERODROME ELEV 693 ft
THR RWY 09 ELEV 688 ft
HEIGHTS RELATED TO AD ELEV

Rzeszów GROUND 121.805
Rzeszów TOWER 126.805
ATIS 124.955

**Rzeszów - Jasionka
VOR
RWY 09 (CAT A/B/C/D)**



Correction: FREQ Rzeszów GROUND added. Editorial changes.



MISSED APPROACH
Climb on course 085° to RZ394 then turn left to DVOR/DME RSW and join holding at RSW climbing to 5000 (4307). Further instructions from ATC. Turn limited to 220 kt IAS max.

OCA (OCH)					Distance FAF - MAPt 6.2 NM							
Cat. of ACFT	A	B	C	D	Speed	kt	80	100	120	140	160	180
Straight - in	1110 (417)	1110 (417)	1110 (417)	1110 (417)	Time	min : s	4 : 38	3 : 42	3 : 05	2 : 39	2 : 19	2 : 04
					Rate of descent	ft / min	420	530	630	740	840	950
	Final approach distance / altitude (height)											
Circling	1160 (467)	1210 (517)	1360 (667)	1390 (697)	Distance	10	9	8	7			
*Cat C and D: circling north of aerodrome only.					Altitude (height)	2300 (1607)	1980 (1287)	1660 (967)	1340 (647)			

**INSTRUMENT
APPROACH
CHART - ICAO**

**Rzeszów - Jasionka
VOR
RWY 09 (CAT A/B/C/D)**

FIX / POINT	LATITUDE	LONGITUDE	FIX FORMATION	
IAF AMZAG	50°11'48.7"N	021°42'52.6"E	288.27° GEO (282° MAG) DVOR RSW	17.03 NM DME RSW
IAF INRUD	50°06'51.0"N	021°35'06.7"E	271.11° GEO (265° MAG) DVOR RSW	21.20 NM DME RSW
IAF OBLEH	50°01'51.2"N	021°42'37.2"E	254.26° GEO (248° MAG) DVOR RSW	17.03 NM DME RSW
IF RZ421	50°06'47.8"N	021°41'35.3"E	271.11° GEO (265° MAG) DVOR RSW	17.03 NM DME RSW
FAF RZ426	50°06'42.8"N	021°50'31.3"E	271.11° GEO (265° MAG) DVOR RSW	11.28 NM DME RSW
MAPt	50°06'36.7"N	022°00'05.5"E	271.11° GEO (265° MAG) DVOR RSW	5.12 NM DME RSW
RZ394	50°06'23.2"N	022°17'57.1"E	091.11° GEO (085° MAG) DVOR RSW	6.38 NM DME RSW
DVOR/DME RSW	50°06'31.0"N	022°08'02.5"E		
Final approach descent angle: 3.00°				