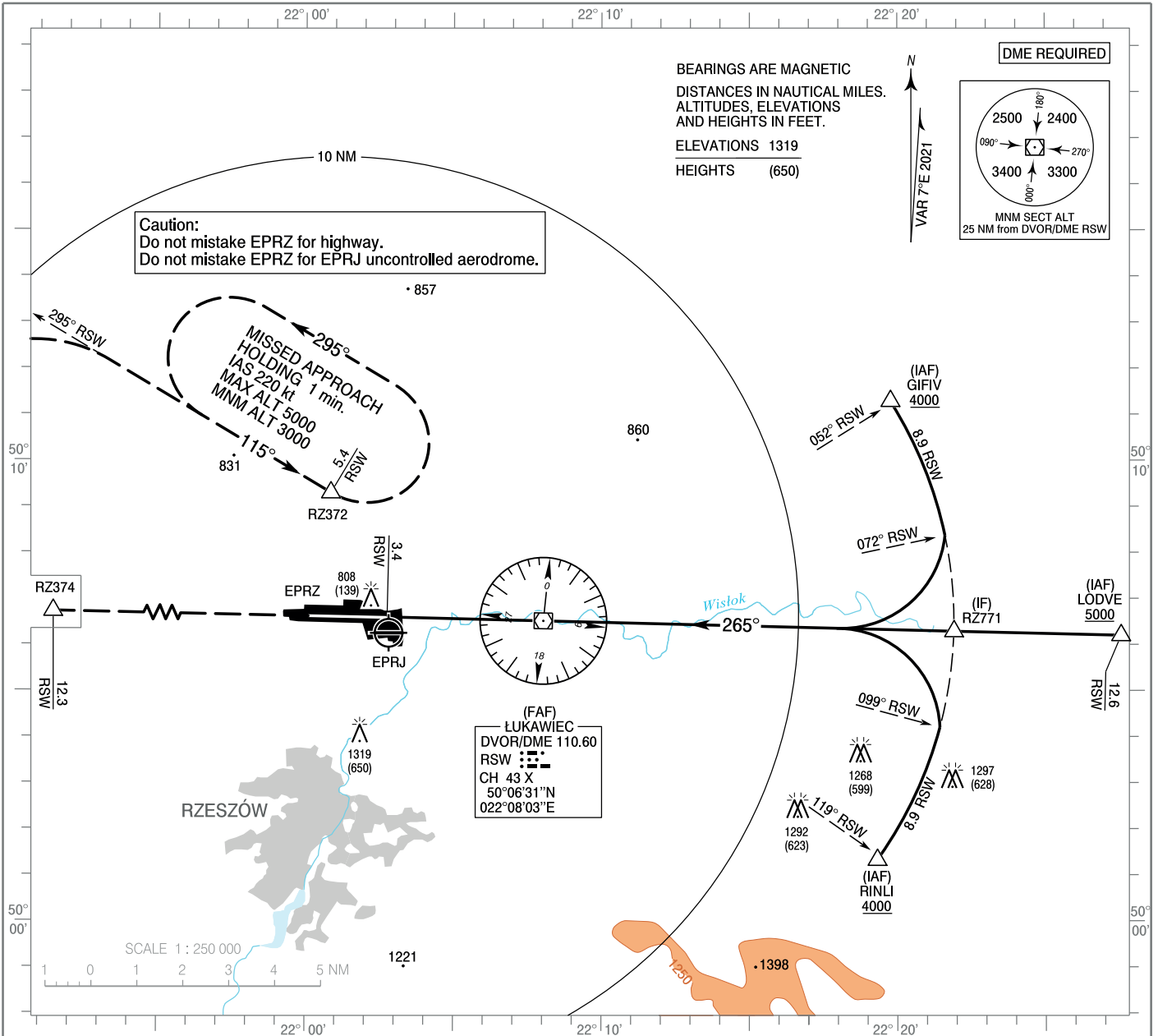


**INSTRUMENT
APPROACH
CHART - ICAO**

AERODROME ELEV 693 ft
THR RWY 27 ELEV 669 ft
HEIGHTS RELATED TO THR RWY 27

Rzeszów GROUND 121.805
Rzeszów TOWER 126.805
ATIS 124.955

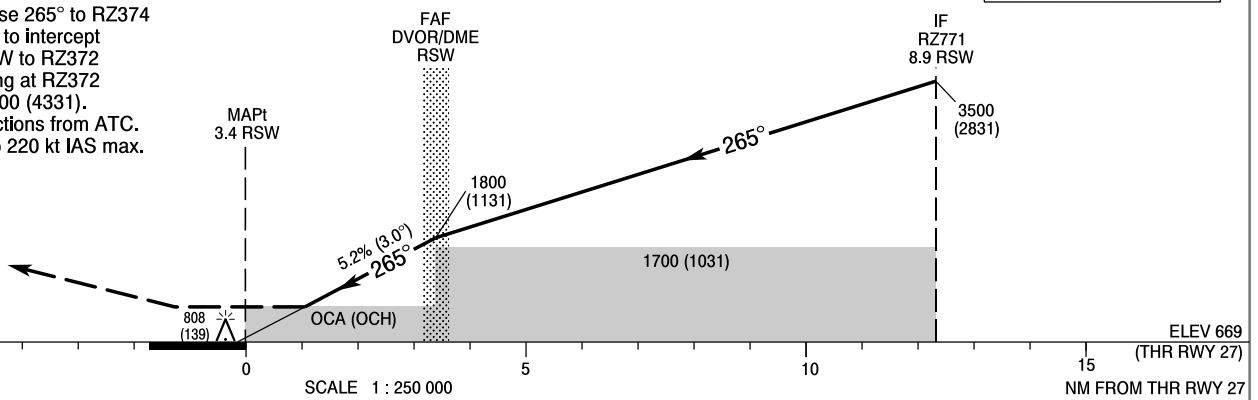
**Rzeszów - Jasionka
VOR
RWY 27 (CAT A/B/C/D)**



Correction: FREQ Rzeszów GROUND added. Editorial changes.

MISSED APPROACH
Climb on course 265° to RZ374
then turn right to intercept
RDL 295° RSW to RZ372
and join holding at RZ372
climbing to 5000 (4331).
Further instructions from ATC.
Turn limited to 220 kt IAS max.

TRANSITION ALTITUDE 6500



OCA (OCH)					Distance FAF - MAPt 3.4 NM							
Cat. of ACFT	A	B	C	D	Speed	kt	80	100	120	140	160	180
Straight - in	1050 (381)	1050 (381)	1050 (381)	1050 (381)	Time	min : s	2 : 33	2 : 03	1 : 42	1 : 28	1 : 17	1 : 08
					Rate of descent	ft / min	420	530	630	740	840	950
Final approach distance / altitude (height)												
Circling (OCH AAL)*	1160 (467)	1210 (517)	1360 (667)	1390 (697)	Distance	1	2	3				
					Altitude (height)	1490 (821)	1170 (501)	850 (181)				

**INSTRUMENT
APPROACH
CHART - ICAO**

**Rzeszów - Jasionka
VOR
RWY 27 (CAT A/B/C/D)**

FIX / POINT	LATITUDE	LONGITUDE	FIX FORMATION	
IAF GIFIV	50°11'17.5"N	022°19'46.3"E	057.57° GEO (052° MAG) DVOR RSW	8.93 NM DME RSW
IAF LODVE	50°06'11.9"N	022°27'33.2"E	091.33° GEO (085° MAG) DVOR RSW	12.57 NM DME RSW
IAF RINLI	50°01'19.8"N	022°19'19.2"E	125.48° GEO (119° MAG) DVOR RSW	8.93 NM DME RSW
IF RZ771	50°06'17.5"N	022°21'54.7"E	091.35° GEO (085° MAG) DVOR RSW	8.93 NM DME RSW
FAF DVOR/DME RSW	50°06'31.0"N	022°08'02.5"E		
MAPt	50°06'34.3"N	022°02'46.2"E	270.96° GEO (265° MAG) DVOR RSW	3.39 NM DME RSW
RZ374	50°06'44.9"N	021°48'55.7"E	271.20° GEO (265° MAG) DVOR RSW	12.31 NM DME RSW
RZ372	50°09'17.7"N	022°00'51.4"E	301.07° GEO (295° MAG) DVOR RSW	5.40 NM DME RSW
Final approach descent angle: 3.00°				