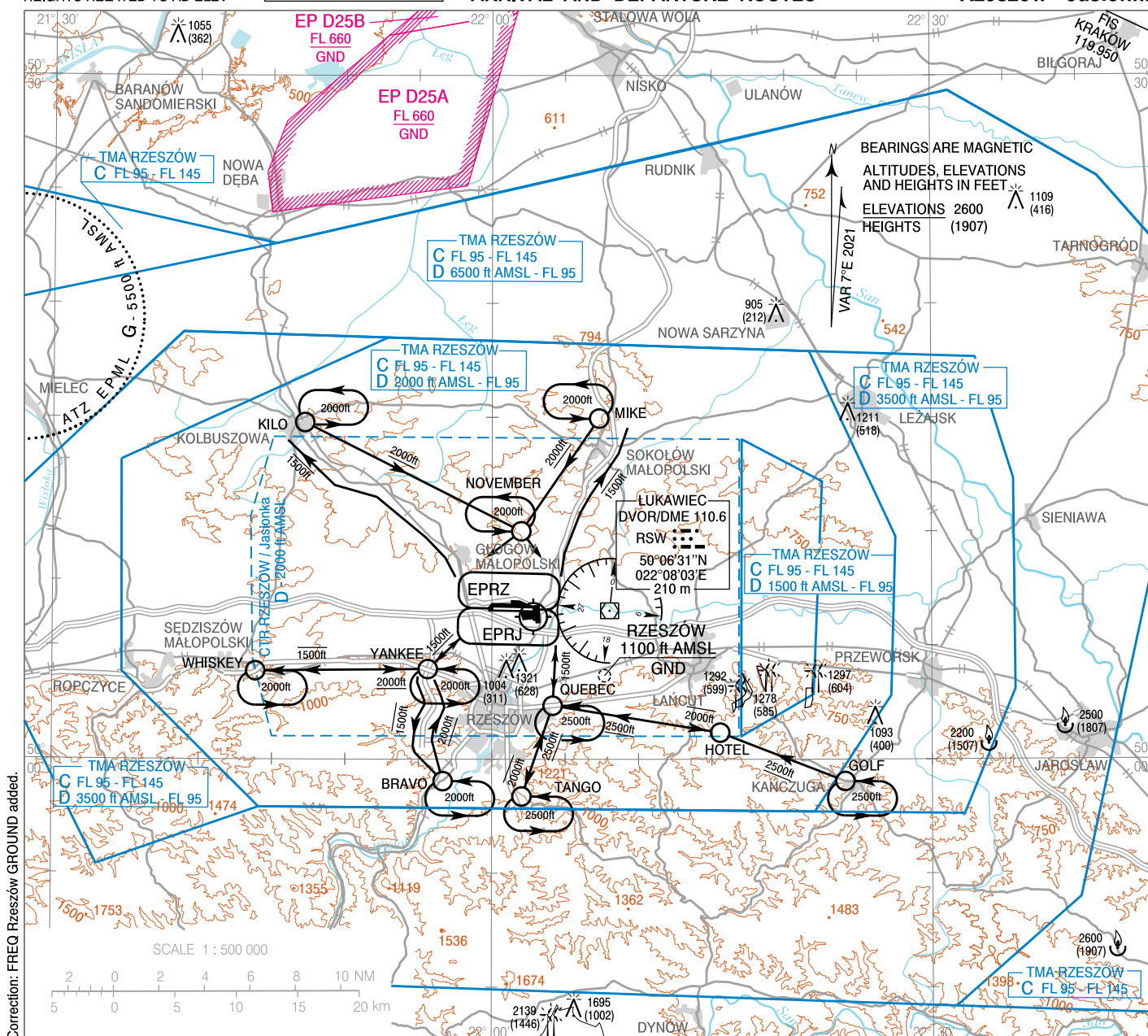


AERODROME ELEV 693 ft
HEIGHTS RELATED TO AD ELEV

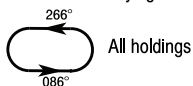
Rzeszów GROUND 121.805
Rzeszów TOWER 126.805

VFR
ARRIVAL AND DEPARTURE ROUTES

Rzeszów - Jasionka



UAV VLOS flying areas (see: AIP ENR 5.3.1)



POINT ID	LATITUDE	LONGITUDE	DESCRIPTION
BRAVO	49°59'02"N	021°56'40"E	Boguchwała town
GOLF	49°59'02"N	022°24'05"E	Western side of Kańczuga town
HOTEL	50°01'10"N	022°15'34"E	Intersection in Granica town
KILO	50°14'46"N	021°47'12"E	Eastern side of Kolbuszowa town
MIKE	50°14'57"N	022°07'19"E	Northern side of Sokołów Małopolski town
NOVEMBER	50°10'00"N	022°02'00"E	Northern side of Wysoka Głogowska town
QUEBEC	50°02'21"N	022°04'09"E	Krasne Shopping Center
TANGO	49°58'22"N	022°02'02"E	Northern side of Tyczyn town
WHISKEY	50°03'52"N	021°43'52"E	Road intersectin in eastern side of Sędziszów Młp. town
YANKEE	50°03'57"N	021°55'38"E	Road intersection of expressway in Świlcza town

See AIP Poland AD 2 EPRZ