

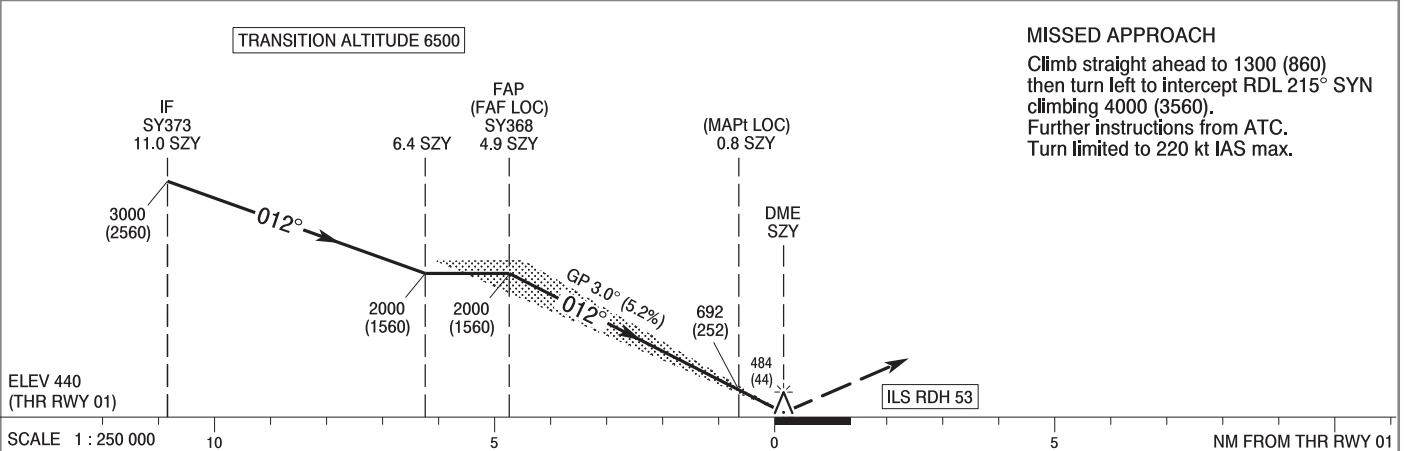
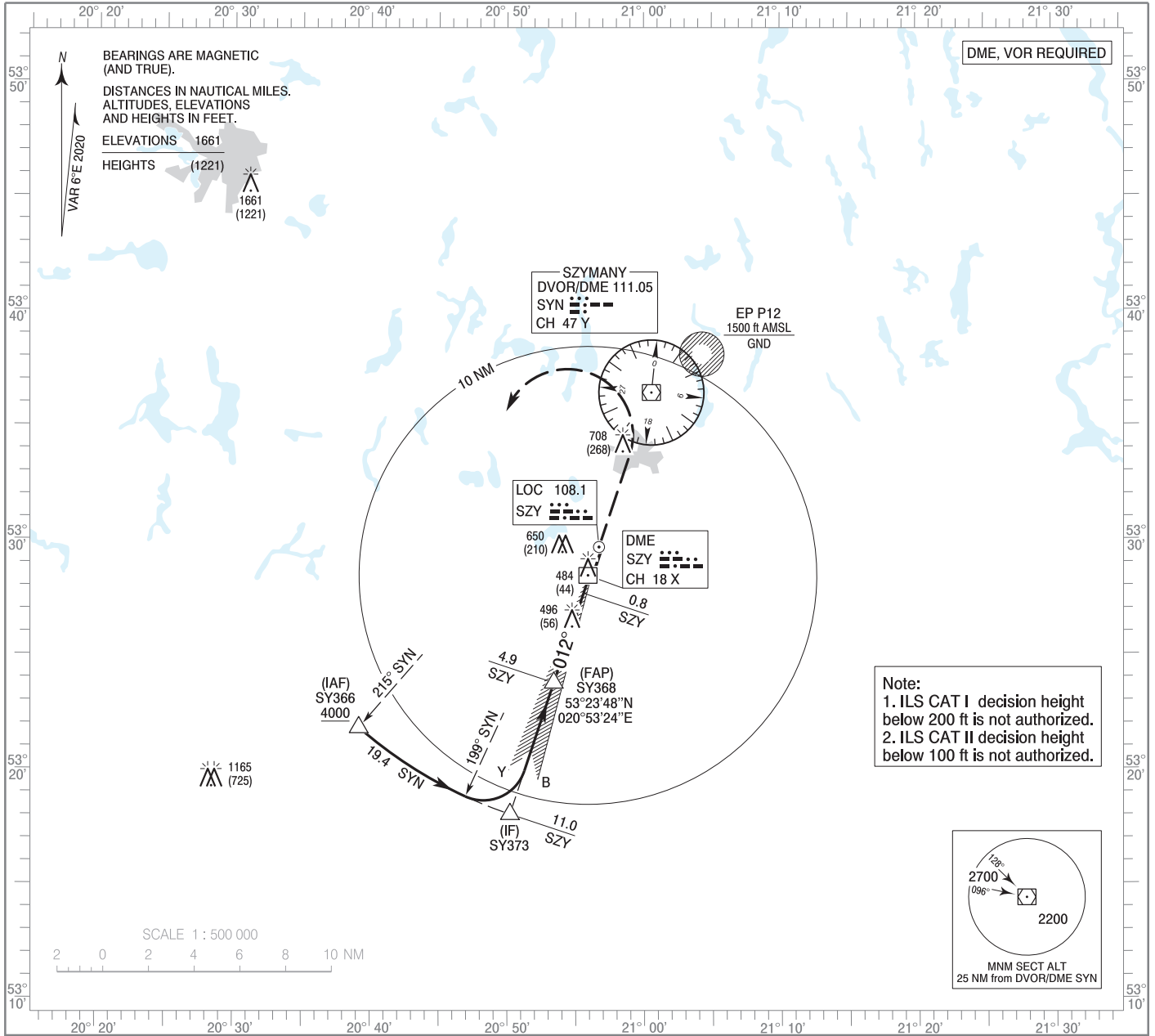
**INSTRUMENT
APPROACH
CHART - ICAO**

AERODROME ELEV 464 ft
THR RWY 01 ELEV 440 ft
HEIGHTS RELATED TO THR RWY 01

Mazury TOWER 118.030
Mazury INFORMATION 118.030
Mazury RADIO 118.030

**Olsztyn - Mazury
ILS z CAT II or LOC z
RWY 01 (CAT A/B/C/D)**

Correction: ILS CAT II approved. Note added. Table OCA (OCH) changed. Tables changed. Obstacles changed. EP P12 added.



OCA (OCH)					Distance FAF - MAPt 4.1								
Cat. of ACFT	A	B	C	D	Speed	kt	80	100	120	140	160	180	
Straight-in	Cat. I	614 (174)	626 (186)	634 (194)	645 (205)	Time	min : s	3 : 05	2 : 28	2 : 03	1 : 46	1 : 32	1 : 22
	Cat. II	526 (86)	543 (103)	555 (115)	569 (129)	Rate of descent	ft / min	420	530	640	740	850	960
	LOC	750 (310)	750 (310)	750 (310)	750 (310)		Final approach distance/altitude (height)						
Circling (OCH AAL)	960 (496)	960 (496)	1060 (596)	1160 (696)	Distance	4		3		2			
					Altitude (height)	1720 (1280)		1400 (960)		1080 (640)			

INSTRUMENT
APPROACH
CHART - ICAOOlsztyn - Mazury
ILS z CAT II or LOC z
RWY 01 (CAT A/B/C/D)

FIX / POINT	LATITUDE	LONGITUDE	FIX FORMATION	
IAF SY366	53°21'49.5"N	020°39'10.1"E	221.28° GEO (215° MAG) DVOR SYN	19.42 NM DME SYN
IF SY373	53°18'03.2"N	020°50'12.5"E	198.65° GEO (192° MAG) DVOR SYN	19.42 NM DME SYN
FAP (FAF LOC) SY368	53°23'47.6"N	020°53'24.1"E	018.47° GEO (012° MAG) LOC SZY	4.91 NM DME SZY
MAPt (LOC)	53°27'41.1"N	020°55'34.5"E	018.48° GEO (012° MAG) LOC SZY	0.80 NM DME SZY
Final approach descent angle: 3.00°				