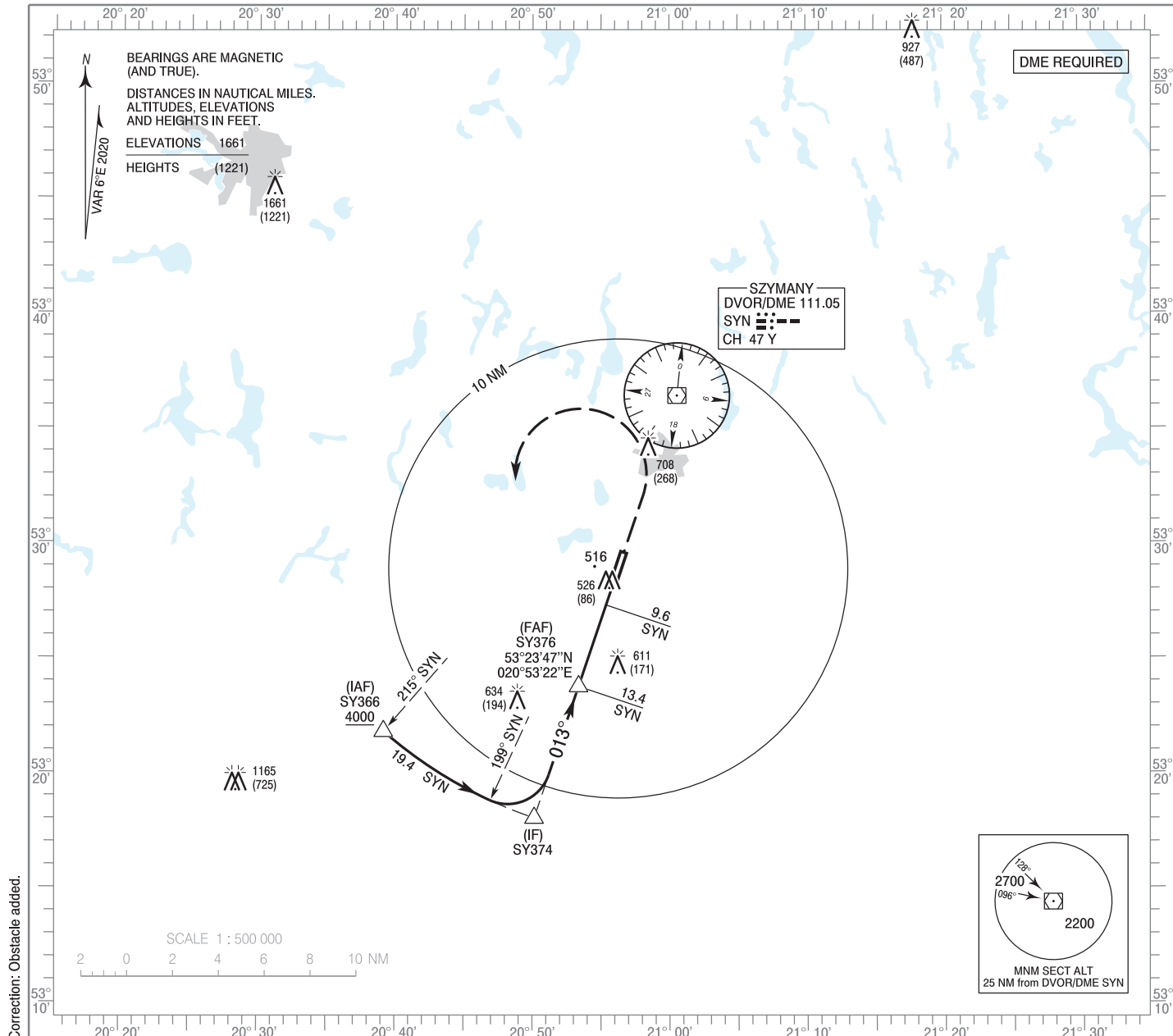


**INSTRUMENT  
APPROACH  
CHART - ICAO**

AERODROME ELEV 464 ft  
THR RWY 01 ELEV 440 ft  
HEIGHTS RELATED TO THR RWY 01

Mazury TOWER 118.030  
Mazury INFORMATION 118.030  
Mazury RADIO 118.030

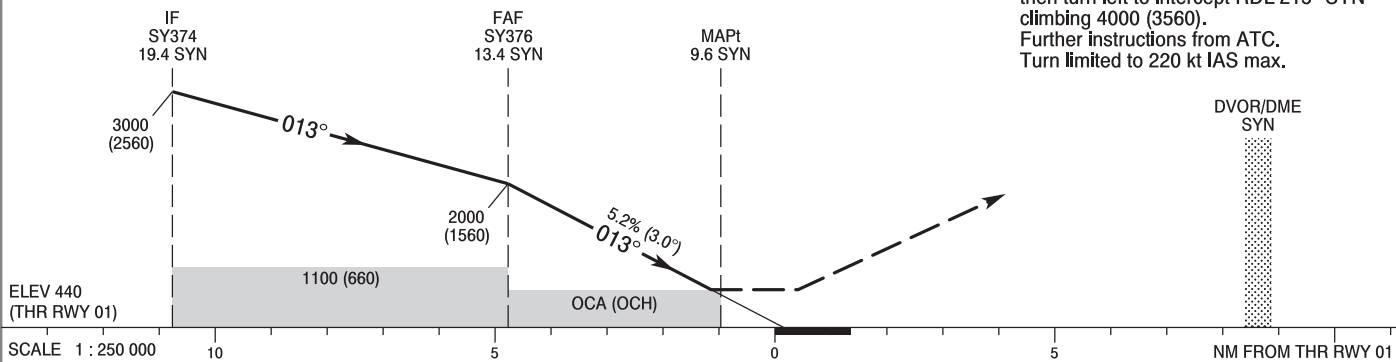
**Olsztyn - Mazury  
VOR  
RWY 01 (CAT A/B/C/D)**



TRANSITION ALTITUDE 6500

**MISSED APPROACH**

Climb straight ahead to 1400 (960) then turn left to intercept RDL 215° SYN climbing 4000 (3560). Further instructions from ATC. Turn limited to 220 kt IAS max.



OCA (OCH)					Distance FAF - MAPt 3.7							
Cat. of ACFT	A	B	C	D	Speed	kt	80	100	120	140	160	180
Straight - in	850 (410)	850 (410)	850 (410)	850 (410)	Time	min : s	2 : 48	2 : 15	1 : 52	1 : 36	1 : 24	1 : 15
					Rate of descent	ft / min	430	530	640	740	850	960
Final approach distance/altitude (height)												
Circling (OCH AAL)	960 (496)	960 (496)	1060 (596)	1160 (696)	Distance		13	12	11	10		
					Altitude (height)		1890 (1450)	1570 (1130)	1250 (810)	930 (490)		

**INSTRUMENT  
APPROACH  
CHART - ICAO**

**Olsztyn - Mazury  
VOR  
RWY 01 (CAT A/B/C/D)**

FIX / POINT	LATITUDE	LONGITUDE	FIX FORMATION	
IAF SY366	53°21'49.5"N	020°39'10.1"E	221.28° GEO (215° MAG) DVOR SYN	19.42 NM DME SYN
IF SY374	53°18'03.8"N	020°50'08.6"E	198.77° GEO (193° MAG) DVOR SYN	19.42 NM DME SYN
FAF SY376	53°23'47.3"N	020°53'22.1"E	198.77° GEO (193° MAG) DVOR SYN	13.37 NM DME SYN
MAPt	53°27'19.6"N	020°55'22.3"E	198.77° GEO (193° MAG) DVOR SYN	9.63 NM DME SYN
Final approach descent angle: 3.00°				