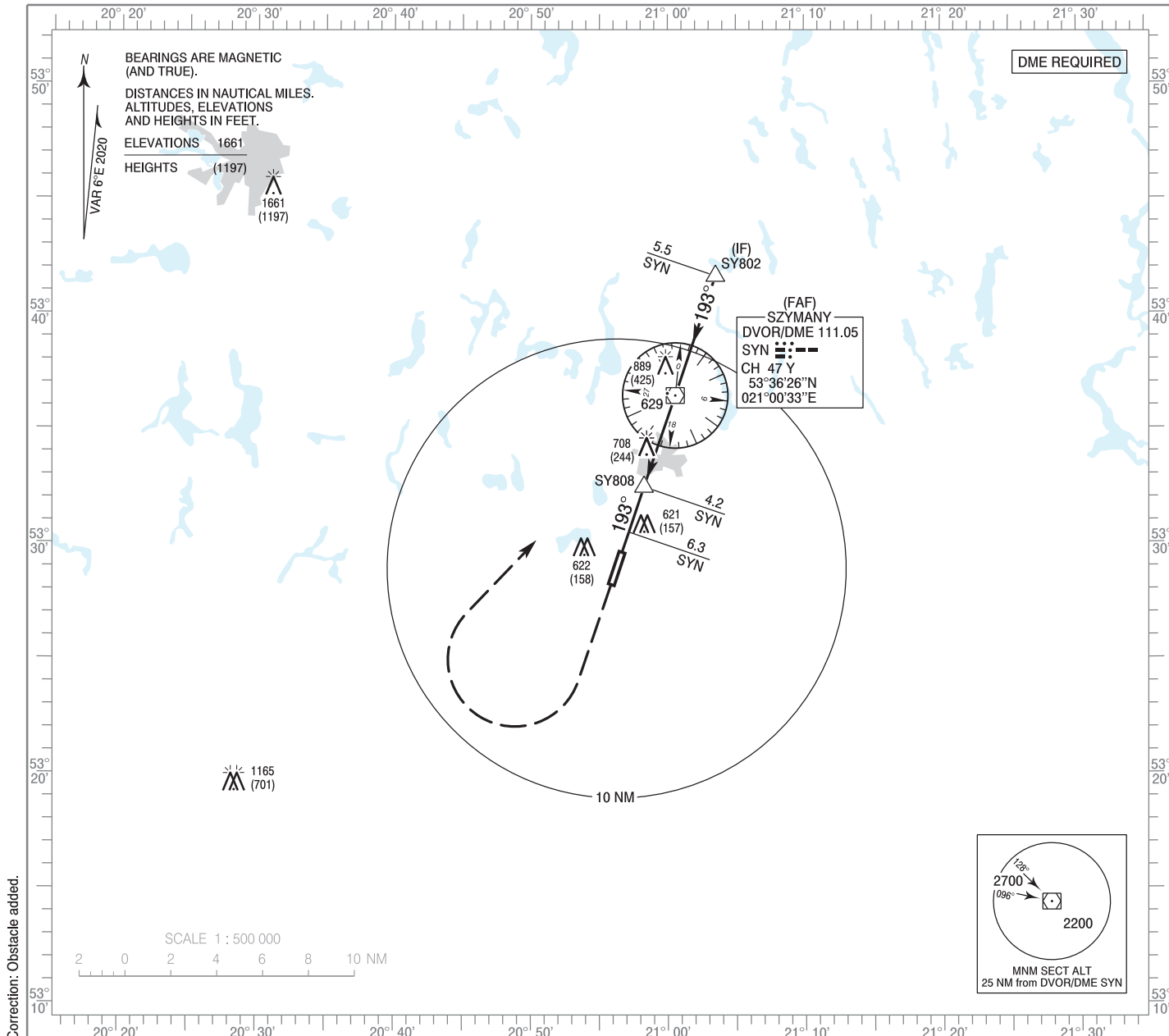


**INSTRUMENT
APPROACH
CHART - ICAO**

AERODROME ELEV 464 ft
THR RWY 19 ELEV 464 ft
HEIGHTS RELATED TO AD ELEV

Mazury TOWER 118.030
Mazury INFORMATION 118.030
Mazury RADIO 118.030

**Olsztyn - Mazury
VOR z
RWY 19 (CAT A/B/C/D)**



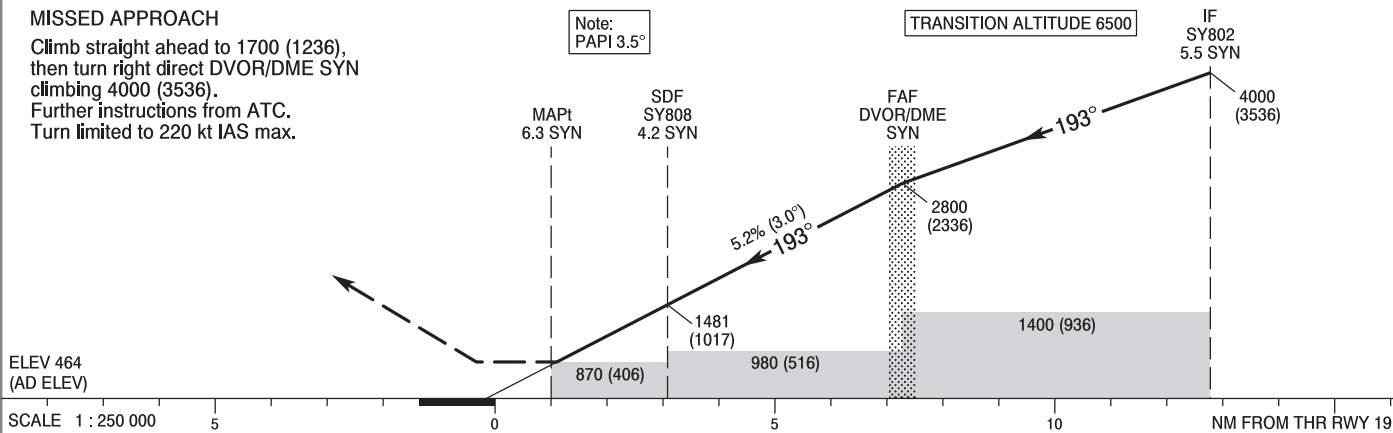
Correction: Obstacle added.

MISSED APPROACH

Climb straight ahead to 1700 (1236), then turn right direct DVOR/DME SYN climbing 4000 (3536). Further instructions from ATC. Turn limited to 220 kt IAS max.

Note: PAPI 3.5°

TRANSITION ALTITUDE 6500



SCALE 1 : 250 000 5 0 5 10 NM FROM THR RWY 19

OCA (OCH)					Distance FAF - MAPt 6.3							
Cat. of ACFT	A	B	C	D	Speed	kt	80	100	120	140	160	180
Straight - in	870 (406)	870 (406)	870 (406)	870 (406)	Time	min : s	4 : 42	3 : 46	3 : 08	2 : 41	2 : 21	2 : 06
	When stepdown fix not received				Rate of descent	ft / min	420	530	630	740	840	940
Circling	980 (516)	980 (516)	1060 (596)	1160 (696)	Final approach distance/altitude (height)							
	980 (516)	980 (516)	1060 (596)	1160 (696)	Distance	6	5	4	3	2	1	
					Altitude (height)	920 (456)	1230 (766)	1550 (1086)	1860 (1396)	2180 (1716)	2490 (2026)	

**INSTRUMENT
APPROACH
CHART - ICAO**

**Olsztyn - Mazury
VOR z
RWY 19 (CAT A/B/C/D)**

FIX / POINT	LATITUDE	LONGITUDE	FIX FORMATION	
IF SY802	53°41'38.0"N	021°03'29.8"E	018.55° GEO (013° MAG) DVOR SYN	5.50 NM DME SYN
FAF DVOR/DME SYN	53°36'25.7"N	021°00'33.2"E		
SDF SY808	53°32'27.7"N	020°58'16.6"E	198.87° GEO (193° MAG) DVOR SYN	4.20 NM DME SYN
MAPt	53°30'29.8"N	020°57'09.1"E	198.87° GEO (193° MAG) DVOR SYN	6.28 NM DME SYN
Final approach descent angle: 2.96°				