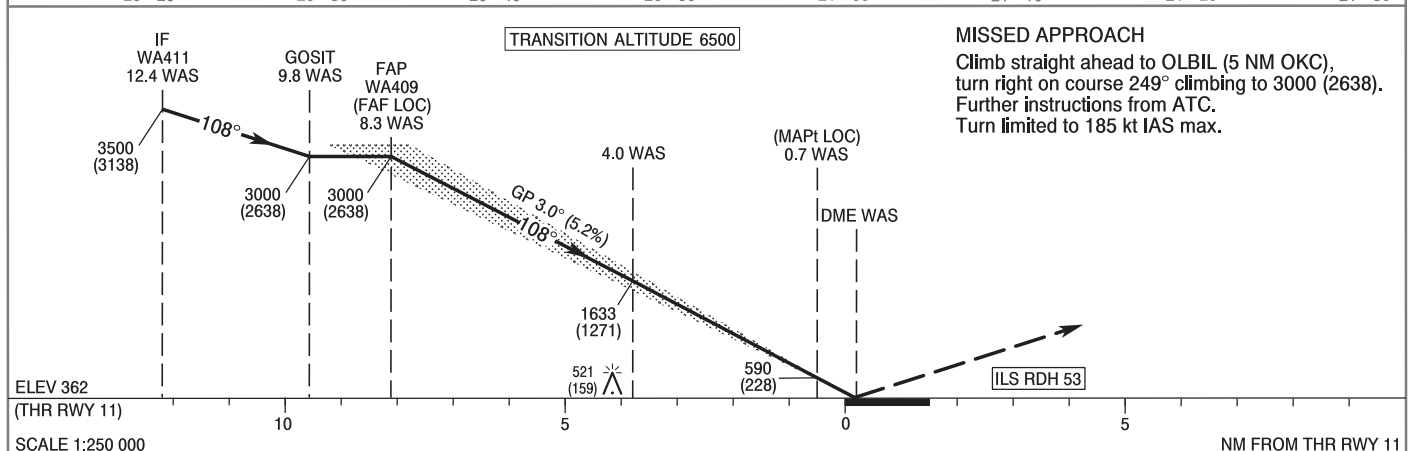
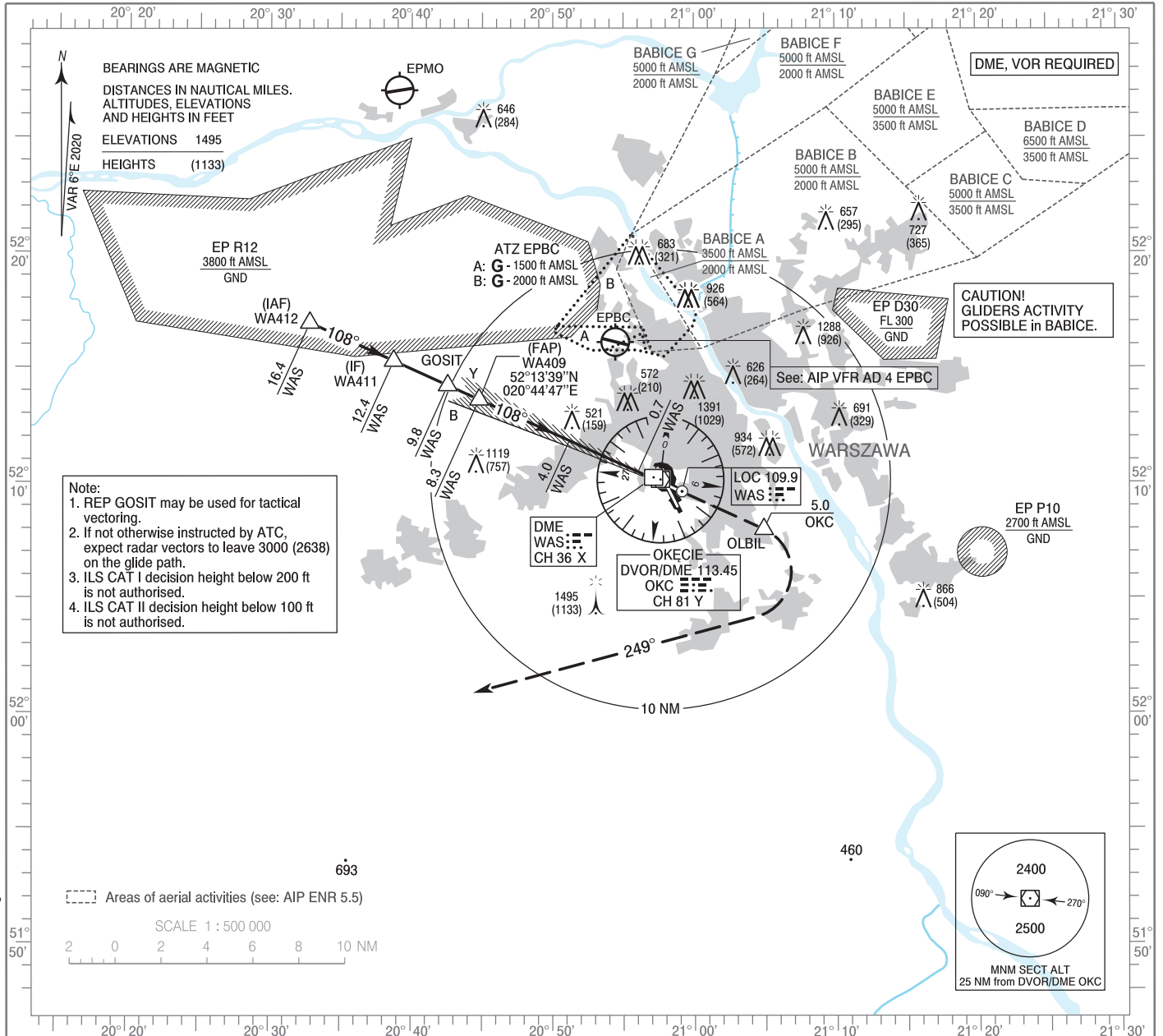


**INSTRUMENT
APPROACH
CHART - ICAO**

AERODROME ELEV 362 ft
THR RWY 11 ELEV 362 ft
HEIGHTS RELATED TO THR RWY 11

Warszawa APPROACH	125.055	ATIS ARR	120.455
	128.805	Okęcie TOWER	118.305
	129.380	Okęcie GROUND	121.905
	135.930		

**WARSAW CHOPIN AIRPORT
ILS z CAT II or LOC z
RWY 11 (CAT A/B/C/D)**



OCA (OCH)					Distance FAF - MAPT 7.6 NM								
Cat. of ACFT		A	B	C	D	Speed	kt	80	100	120	140	160	180
		Straight - in	Cat. I	561 (199)	573 (211)	581 (219)	592 (230)	Time	min : s	5 : 41	4 : 32	3 : 47	3 : 15
Cat. II	440 (78)		457 (95)	470 (108)	483 (121)	Rate of descent	ft / min	420	530	630	740	840	950
LOC	770 (408)		770 (408)	770 (408)	770 (408)								
Circling approaches are prohibited						Final approach distance/altitude (height)							
						Distance	8	6	4	2			
						Altitude (height)	2910 (2548)	2270 (1908)	1640 (1278)	1000 (638)			

INSTRUMENT
APPROACH
CHART - ICAOWARSAW CHOPIN AIRPORT
ILS z CAT II or LOC z
RWY 11 (CAT A/B/C/D)

FIX / POINT	LATITUDE	LONGITUDE	FIX FORMATION	
IAF WA412	52°16'57.7"N	020°32'48.0"E	114.20° GEO (108° MAG) LOC WAS	16.38 NM DME WAS
IF WA411	52°15'19.3"N	020°38'44.3"E	114.28° GEO (108° MAG) LOC WAS	12.38 NM DME WAS
REP GOSIT	52°14'15.7"N	020°42'33.9"E	114.36° GEO (108° MAG) LOC WAS	9.79 NM DME WAS
FAP WA409 (FAF LOC)	52°13'38.6"N	020°44'47.3"E	114.36° GEO (108° MAG) LOC WAS	8.29 NM DME WAS
MAPt (LOC)	52°10'30.4"N	020°56'01.6"E	114.36° GEO (108° MAG) LOC WAS	0.70 NM DME WAS
REP OLBIL	52°08'00.5"N	021°04'54.5"E	115.80° GEO (110° MAG) DVOR OKC	5.00 NM DME OKC
Final approach descent angle: 3.00°				