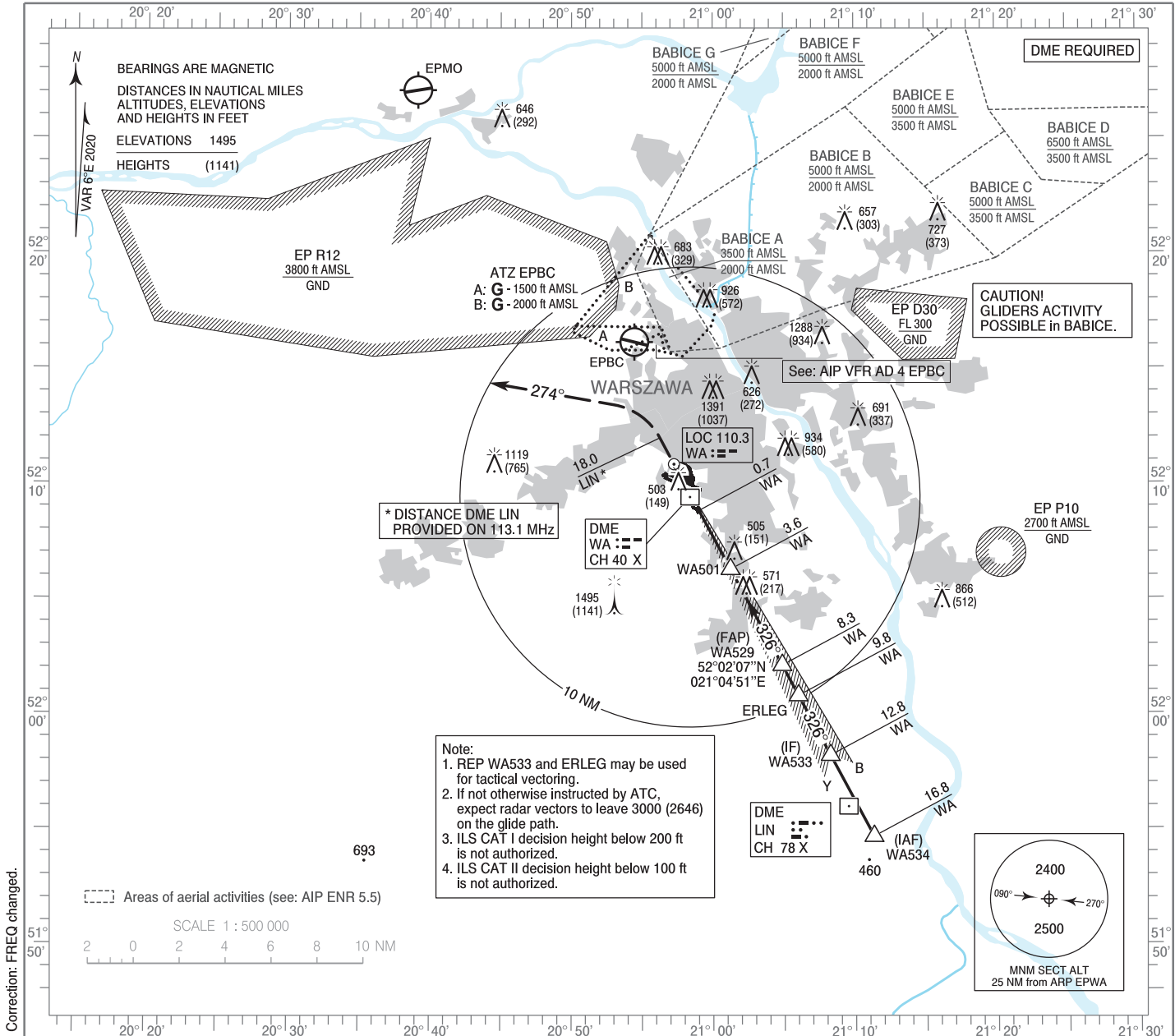


**INSTRUMENT  
APPROACH  
CHART - ICAO**

AERODROME ELEV 362 ft  
THR RWY 33 ELEV 354 ft  
HEIGHTS RELATED TO THR RWY 33

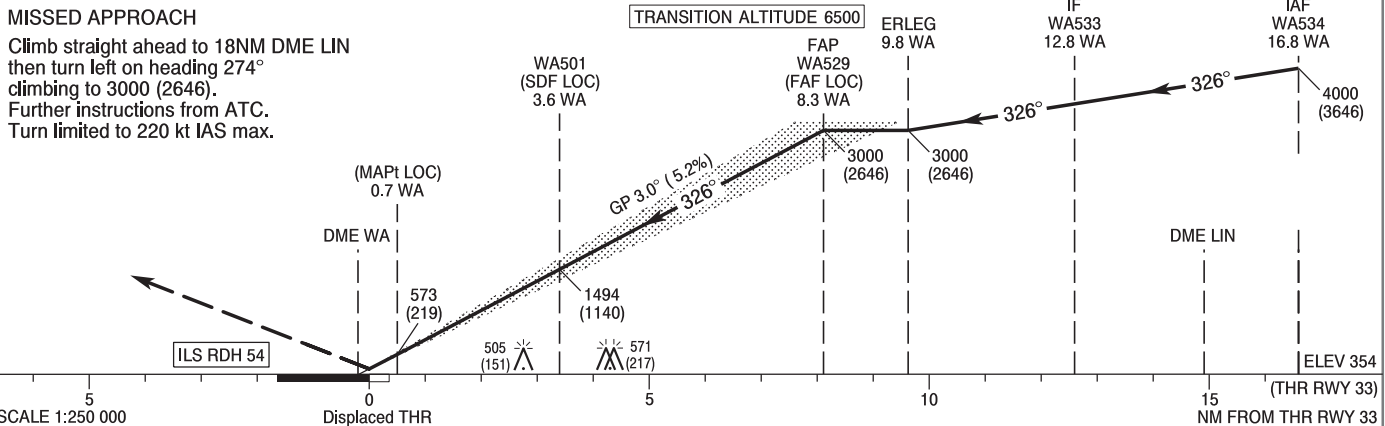
Warszawa APPROACH	125.055	ATIS ARR	120.455
	128.805	Okecie TOWER	118.305
	129.380	Okecie GROUND	121.905
	135.930		

**WARSAW CHOPIN AIRPORT  
ILS x CAT II & III or LOC x  
RWY 33 (CAT A/B/C/D)**



**MISSED APPROACH**

Climb straight ahead to 18NM DME LIN then turn left on heading 274° climbing to 3000 (2646). Further instructions from ATC. Turn limited to 220 kt IAS max.



OCA (OCH)	A	B	C	D	Distance FAF - MAPt 7.6 NM								
					Speed	kt	80	100	120	140	160	180	
Straight - in	Cat. I	537 (183)	549 (195)	557 (203)	568 (214)	Speed	kt	80	100	120	140	160	180
	Cat. II	426 (72)	443 (89)	455 (101)	469 (115)	Time	min : s	5 : 43	4 : 34	3 : 49	3 : 16	2 : 51	2 : 32
	LOC	760 (406)	760 (406)	760 (406)	760 (406)	Rate of descent	ft / min	420	530	630	740	840	950
When stepdown fix not received													
		820 (466)	820 (466)	820 (466)	820 (466)								
ILS CAT IIIA approved.					Final approach distance/altitude (height)								
Circling approaches are prohibited					Distance	8	6	4	2				
					Altitude (height)	2900 (2546)	2270 (1916)	1630 (1276)	990 (636)				

INSTRUMENT  
APPROACH  
CHART - ICAOWARSAW CHOPIN AIRPORT  
ILS x CAT II & III or LOC x  
RWY 33 (CAT A/B/C/D)

FIX / POINT	LATITUDE	LONGITUDE	FIX FORMATION	
IAF WA534	51°54'40.1"N	021°11'17.8"E	331.91° GEO (326° MAG) LOC WA	16.78 NM DME WA
IF WA533	51°58'11.5"N	021°08'15.1"E	331.87° GEO (326° MAG) LOC WA	12.78 NM DME WA
REP ERLEG	52°00'47.2"N	021°06'00.2"E	331.84° GEO (326° MAG) LOC WA	9.83 NM DME WA
FAP WA529 (FAF LOC)	52°02'06.8"N	021°04'51.0"E	331.83° GEO (326° MAG) LOC WA	8.32 NM DME WA
WA501 (SDF LOC)	52°06'16.6"N	021°01'13.7"E	331.83° GEO (326° MAG) LOC WA	3.59 NM DME WA
MAPt (LOC)	52°08'49.4"N	020°59'00.4"E	331.83° GEO (326° MAG) LOC WA	0.70 NM DME WA
Final approach descent angle: 3.00°				