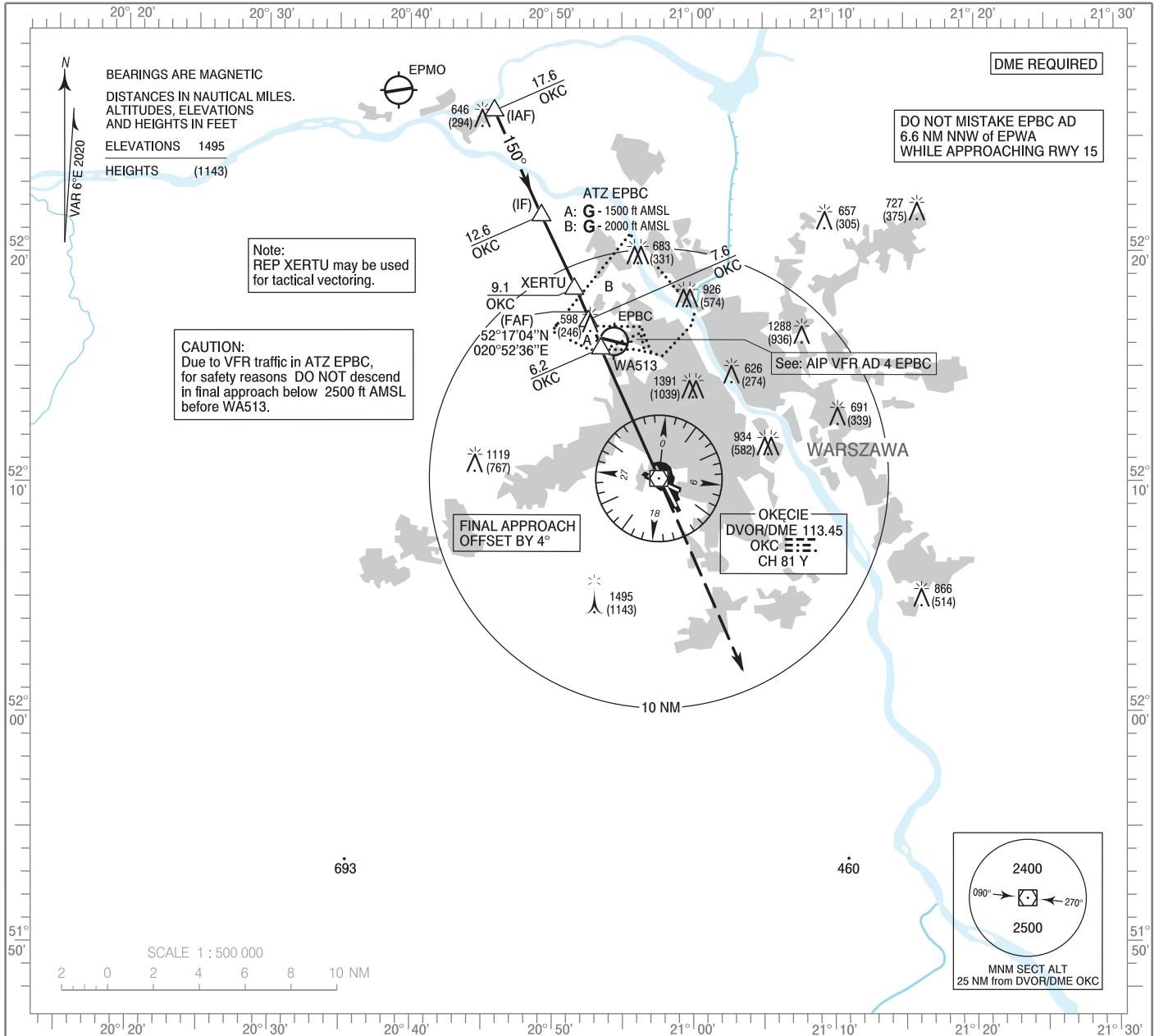


**INSTRUMENT  
APPROACH  
CHART - ICAO**

AERODROME ELEV 362 ft  
THR RWY 15 ELEV 352 ft  
HEIGHTS RELATED TO THR RWY 15

Warszawa APPROACH	125.055	ATIS ARR	120.455
	128.805	Okecie TOWER	118.305
	129.380	Okecie GROUND	121.905
	135.930		

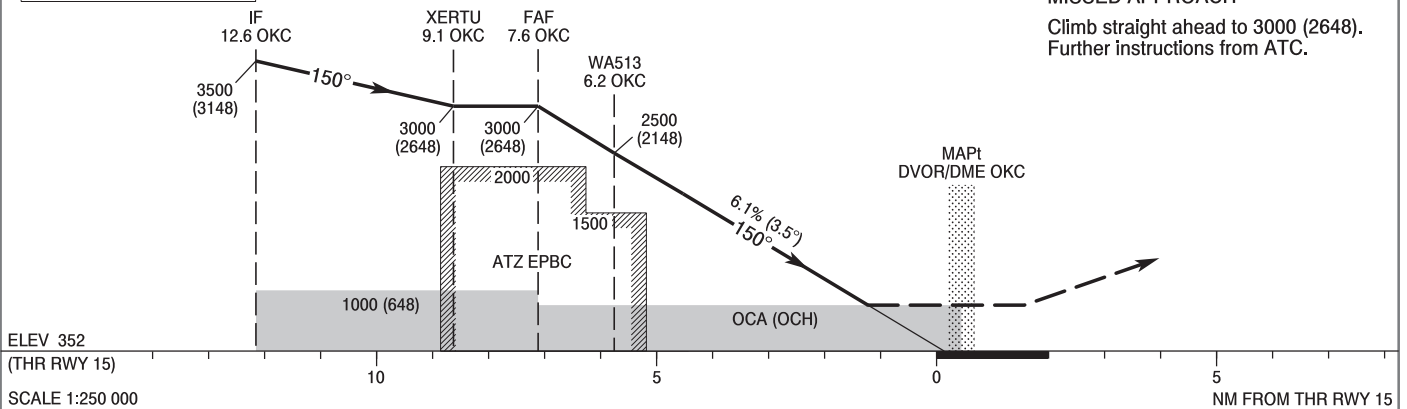
**WARSAW CHOPIN AIRPORT  
VOR  
RWY 15 (CAT A/B/C/D)**



Correction: FREQ changed.

TRANSITION ALTITUDE 6500

**MISSED APPROACH**  
Climb straight ahead to 3000 (2648).  
Further instructions from ATC.



Cat. of ACFT	OCA (OCH)				Distance FAF - MAPt 7.6 NM							
	A	B	C	D	Speed	kt	80	100	120	140	160	180
Straight-in	850 (498)	850 (498)	850 (498)	850 (498)	Time	min : s	5 : 40	4 : 32	3 : 47	3 : 14	2 : 50	2 : 31
					Rate of descent	ft / min	500	620	750	870	990	1120
Circling approaches are prohibited					Final approach distance/altitude (height)							
					Distance		6	5	4	3		
					Altitude (height)		2430 (2078)	2060 (1708)	1690 (1338)	1320 (968)		

**INSTRUMENT  
APPROACH  
CHART - ICAO**

**WARSAW CHOPIN AIRPORT  
VOR  
RWY 15 (CAT A/B/C/D)**

FIX / POINT	LATITUDE	LONGITUDE	FIX FORMATION	
IAF	52°26'11.5"N	020°45'56.0"E	336.00° GEO (330° MAG ) DVOR OKC	17.56 NM DME OKC
IF	52°21'38.0"N	020°49'16.3"E	336.00° GEO (330° MAG ) DVOR OKC	12.56 NM DME OKC
REP XERTU	52°18'26.3"N	020°51'36.3"E	336.00° GEO (330° MAG ) DVOR OKC	9.05 NM DME OKC
FAF	52°17'04.2"N	020°52'36.2"E	336.00° GEO (330° MAG ) DVOR OKC	7.55 NM DME OKC
WA513	52°15'50.4"N	020°53'29.9"E	336.00° GEO (330° MAG ) DVOR OKC	6.20 NM DME OKC
MAPt DVOR/DME OKC	52°10'11.1"N	020°57'36.2"E		
Final approach descent angle: 3.50°				