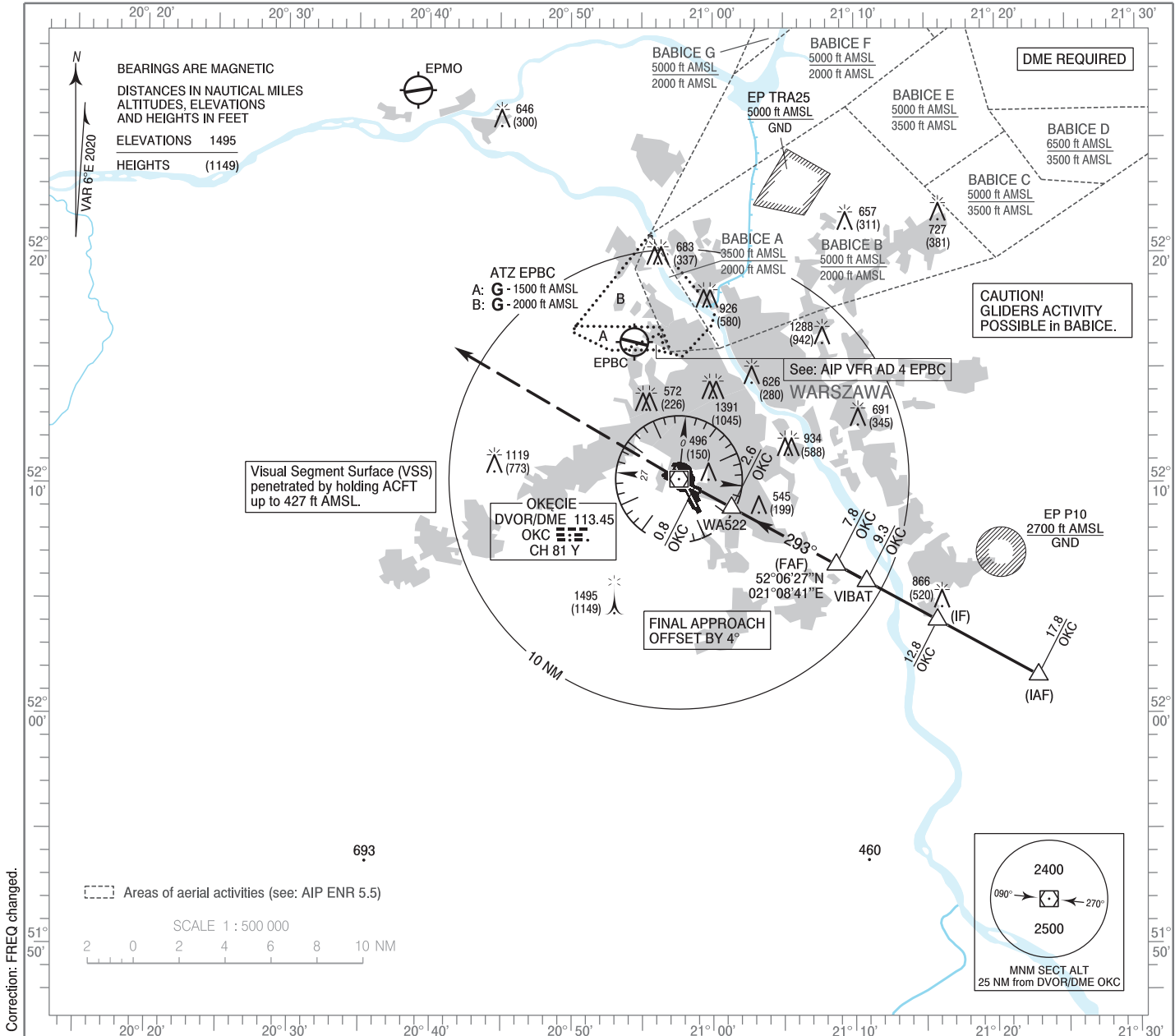


**INSTRUMENT
APPROACH
CHART - ICAO**

AERODROME ELEV 362 ft
THR RWY 29 ELEV 346 ft
HEIGHTS RELATED TO THR RWY 29

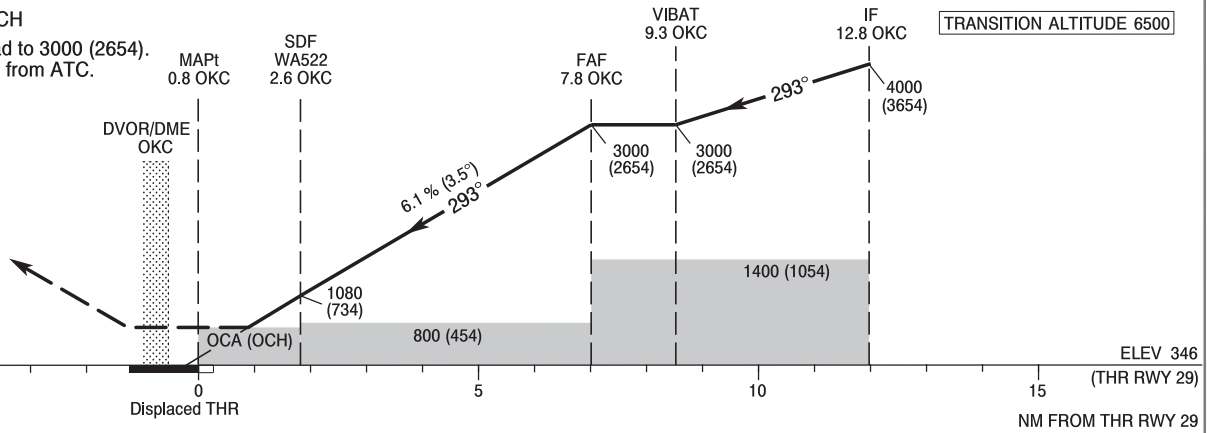
Warszawa APPROACH	125.055	ATIS ARR	120.455
	128.805	Okęcie TOWER	118.305
	129.380	Okęcie GROUND	121.905
	135.930		

**WARSAW CHOPIN AIRPORT
VOR
RWY 29 (CAT A/B/C/D)**



MISSED APPROACH

Climb straight ahead to 3000 (2654).
Further instructions from ATC.



Cat. of ACFT	OCA (OCH)				Distance FAF - MAPt 7.0 NM							
	A	B	C	D	Speed	kt	80	100	120	140	160	180
Straight - in	750 (404)	750 (404)	750 (404)	750 (404)	Time	min : s	5 : 16	4 : 13	3 : 31	3 : 01	2 : 38	2 : 21
	When stepdown fix not received				Rate of descent	ft / min	500	620	750	870	990	1120
Circling approaches are prohibited					Final approach distance/altitude (height)							
					Distance		6	5	4	3		
					Altitude (height)		2340 (1994)	1970 (1624)	1600 (1254)	1230 (884)		

INSTRUMENT
APPROACH
CHART - ICAOWARSAW CHOPIN AIRPORT
VOR
RWY 29 (CAT A/B/C/D)

FIX / POINT	LATITUDE	LONGITUDE	FIX FORMATION	
IAF	52°01'38.4"N	021°22'53.8"E	118.58° GEO (113° MAG) DVOR OKC	17.79 NM DME OKC
IF	52°04'03.0"N	021°15'48.2"E	118.58° GEO (113° MAG) DVOR OKC	12.79 NM DME OKC
REP VIBAT	52°05'44.2"N	021°10'49.5"E	118.58° GEO (113° MAG) DVOR OKC	9.29 NM DME OKC
FAF	52°06'27.4"N	021°08'41.5"E	118.58° GEO (113° MAG) DVOR OKC	7.79 NM DME OKC
SDF WA522	52°08'56.5"N	021°01'18.6"E	118.58° GEO (113° MAG) DVOR OKC	2.60 NM DME OKC
MAPt	52°09'49.3"N	020°58'41.2"E	118.58° GEO (113° MAG) DVOR OKC	0.76 NM DME OKC
Final approach descent angle: 3.50°				