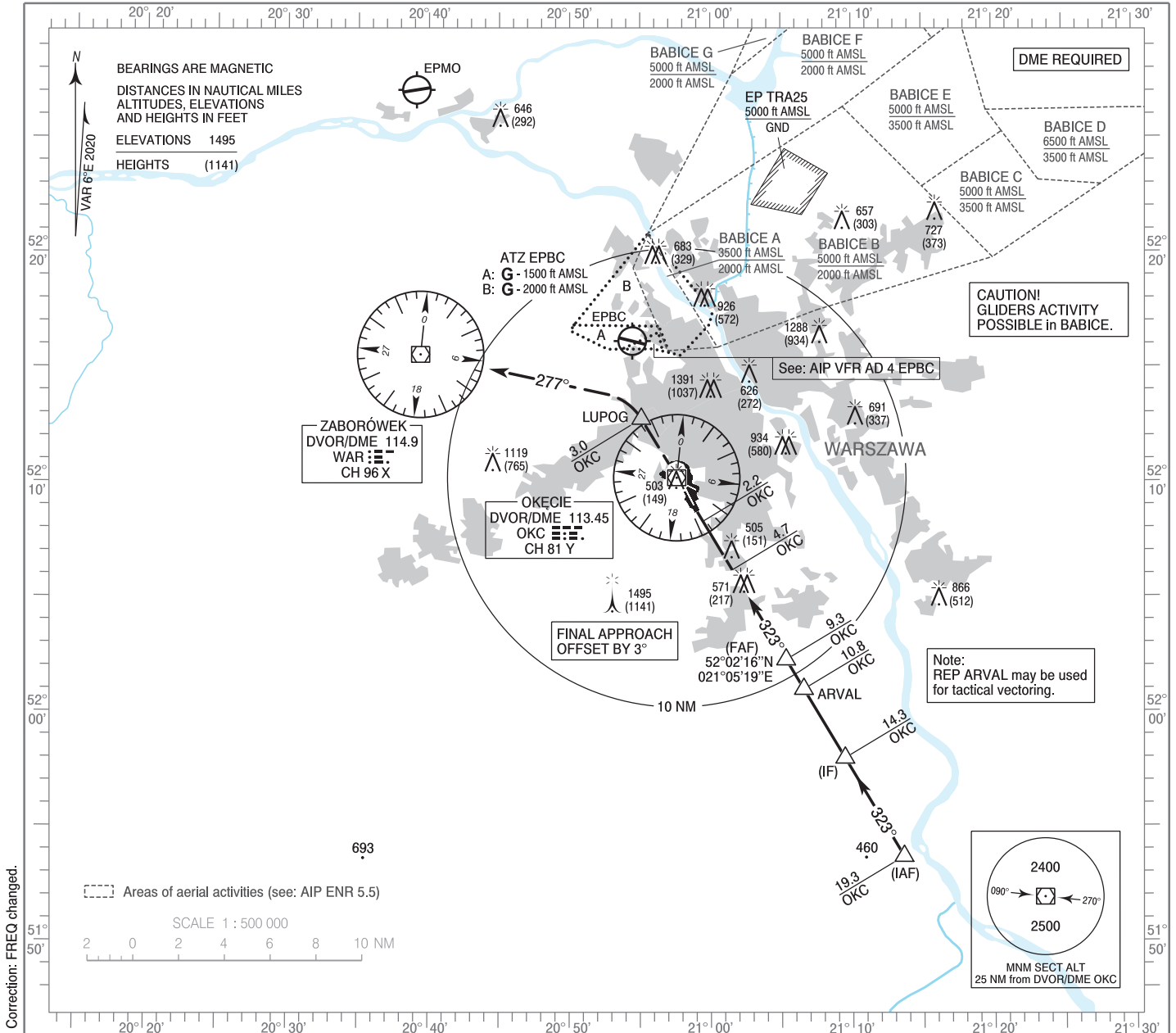


**INSTRUMENT  
APPROACH  
CHART - ICAO**

AERODROME ELEV 362 ft  
THR RWY 33 ELEV 354 ft  
HEIGHTS RELATED TO THR RWY 33

Warszawa APPROACH	125.055	ATIS ARR	120.455
	128.805	Okęcie TOWER	118.305
	129.380	Okęcie GROUND	121.905
	135.930		

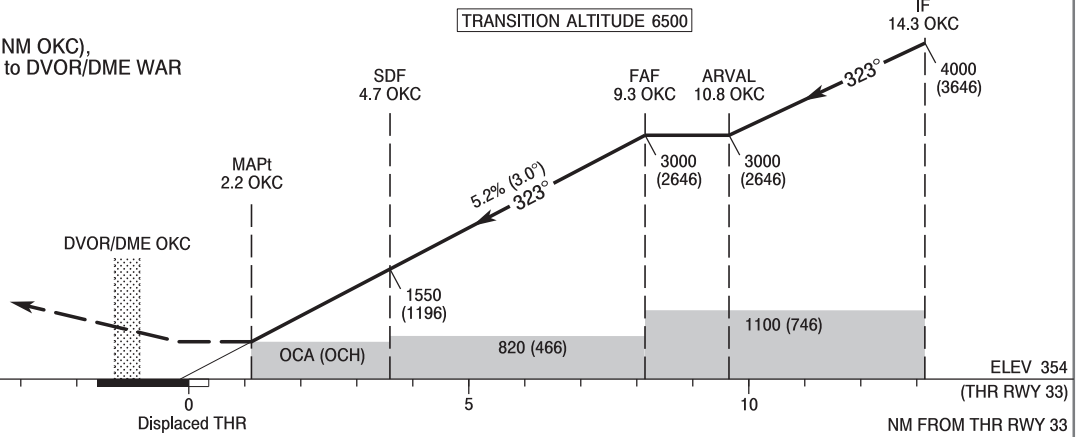
**WARSAW CHOPIN AIRPORT  
VOR  
RWY 33 (CAT A/B/C/D)**



**MISSED APPROACH**

Climb straight ahead to LUPOG (3 NM OKC),  
turn left to intercept RDL 097 WAR to DVOR/DME WAR  
climbing to 3000 (2646).  
Further instructions from ATC.  
Turn limited to 185 kt IAS max.

TRANSITION ALTITUDE 6500



Cat. of ACFT	OCA (OCH)				Distance FAF - MAPt 7.0 NM							
	A	B	C	D	Speed	kt	80	100	120	140	160	180
Straight - in	760 (406)	760 (406)	760 (406)	760 (406)	Time	min : s	5 : 14	4 : 11	3 : 29	2 : 59	2 : 37	2 : 19
	When stepdown fix not received				Rate of descent	ft / min	430	540	640	750	850	960
Circling approaches are prohibited					Final approach distance/altitude (height)							
					Distance		9	7	5	3		
					Altitude (height)		2920 (2566)	2290 (1936)	1650 (1296)	1010 (656)		

INSTRUMENT  
APPROACH  
CHART - ICAOWARSAW CHOPIN AIRPORT  
VOR  
RWY 33 (CAT A/B/C/D)

FIX / POINT	LATITUDE	LONGITUDE	FIX FORMATION	
IAF	51°53'41.3"N	021°13'36.5"E	149.00° GEO (143° MAG) DVOR OKC	19.25 NM DME OKC
IF	51°57'58.6"N	021°09'28.2"E	149.00° GEO (143° MAG) DVOR OKC	14.25 NM DME OKC
REP ARVAL	52°00'58.6"N	021°06'33.9"E	149.00° GEO (143° MAG) DVOR OKC	10.75 NM DME OKC
FAF	52°02'15.8"N	021°05'19.1"E	149.00° GEO (143° MAG) DVOR OKC	9.25 NM DME OKC
SDF	52°06'10.2"N	021°01'31.2"E	149.00° GEO (143° MAG) DVOR OKC	4.69 NM DME OKC
MAP <sub>t</sub>	52°08'17.3"N	020°59'27.3"E	149.00° GEO (143° MAG) DVOR OKC	2.22 NM DME OKC
REP LUPOG	52°12'45.2"N	020°55'05.5"E	329.00° GEO (323° MAG) DVOR OKC	3.00 NM DME OKC
DVOR/DME WAR	52°15'33.0"N	020°39'26.0"E		
Final approach descent angle: 3.00°				