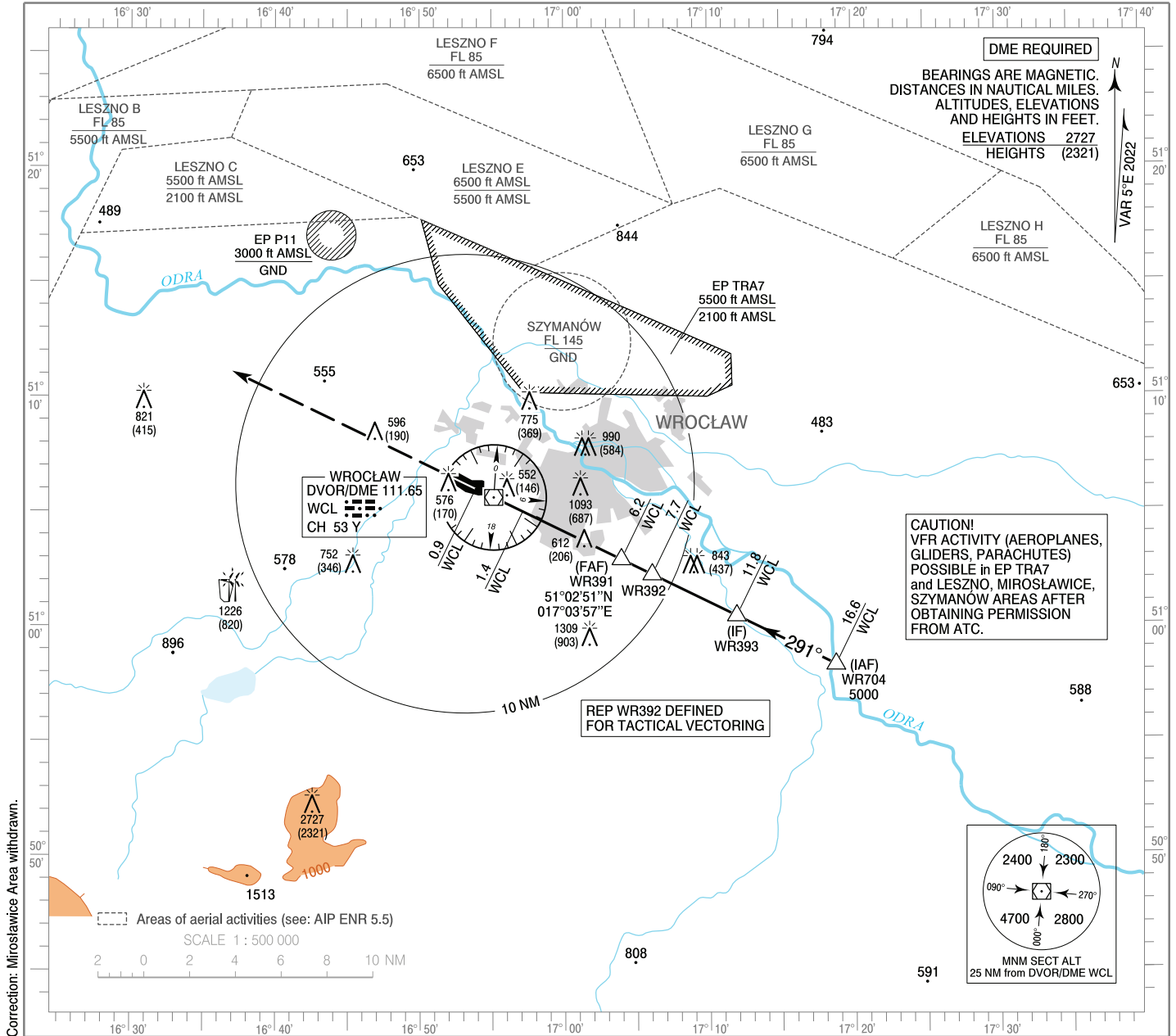


**INSTRUMENT  
APPROACH  
CHART - ICAO**

AERODROME ELEV 406 ft  
THR RWY 29 ELEV 401 ft  
HEIGHTS RELATED TO AD ELEV

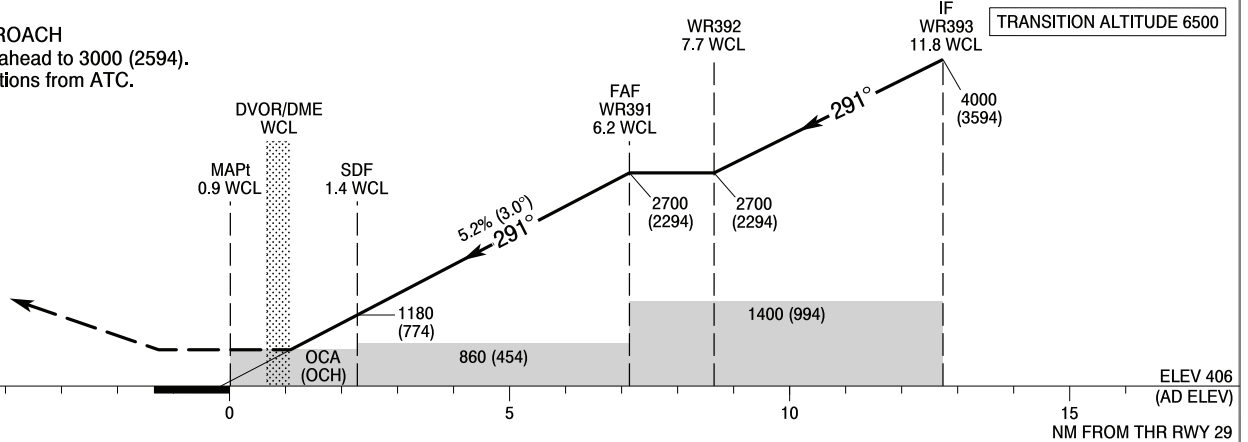
Poznań APPROACH 123.040, 128.925  
Wrocław TOWER 120.255  
ATIS 124.330

**Wrocław - Strachowice  
VOR z  
RWY 29 (CAT A/B/C/D)**



Correction: Mirosławice Area withdrawn.

**MISSED APPROACH**  
Climb straight ahead to 3000 (2594).  
Further instructions from ATC.



ELEV 406 (AD ELEV)

SCALE 1 : 250 000

Cat. of ACFT	OCA (OCH)				Distance FAF - MAPt 7.1 NM							
	A	B	C	D	Speed	kt	80	100	120	140	160	180
Straight - in	770 (364)	770 (364)	770 (364)	770 (364)	Time	min : s	5 : 18	4 : 15	3 : 32	3 : 02	2 : 39	2 : 22
	When stepdown fix not received				Rate of descent	ft / min	420	530	630	740	840	950
Circling*	880 (474)	900 (494)	1100 (694)	1500 (1094)	Final approach distance / altitude (height)							
	Distance	6	5	4	3	Altitude (height)	2650 (2244)	2330 (1924)	2010 (1604)	1690 (1284)		

INSTRUMENT  
APPROACH  
CHART - ICAOWROCLAW / Strachowice  
VOR z  
RWY 29 (CAT A/B/C/D)

FIX / POINT	LATITUDE	LONGITUDE	FIX FORMATION	
IAF WR704	50°58'15.0"N	017°18'44.8"E	116.00° GEO (111° MAG) DVOR WCL	16.61 NM DME WCL
IF WR393	51°00'22.8"N	017°11'54.5"E	116.00° GEO (111° MAG) DVOR WCL	11.79 NM DME WCL
WR392	51°02'11.2"N	017°06'04.8"E	116.00° GEO (111° MAG) DVOR WCL	7.69 NM DME WCL
FAF WR391	51°02'50.8"N	017°03'56.8"E	116.00° GEO (111° MAG) DVOR WCL	6.19 NM DME WCL
SDF	51°04'56.8"N	016°57'07.9"E	116.00° GEO (111° MAG) DVOR WCL	1.40 NM DME WCL
MAPt	51°05'56.7"N	016°53'53.0"E	296.00° GEO (291° MAG) DVOR WCL	0.88 NM DME WCL
Final approach descent angle: 3.00°				