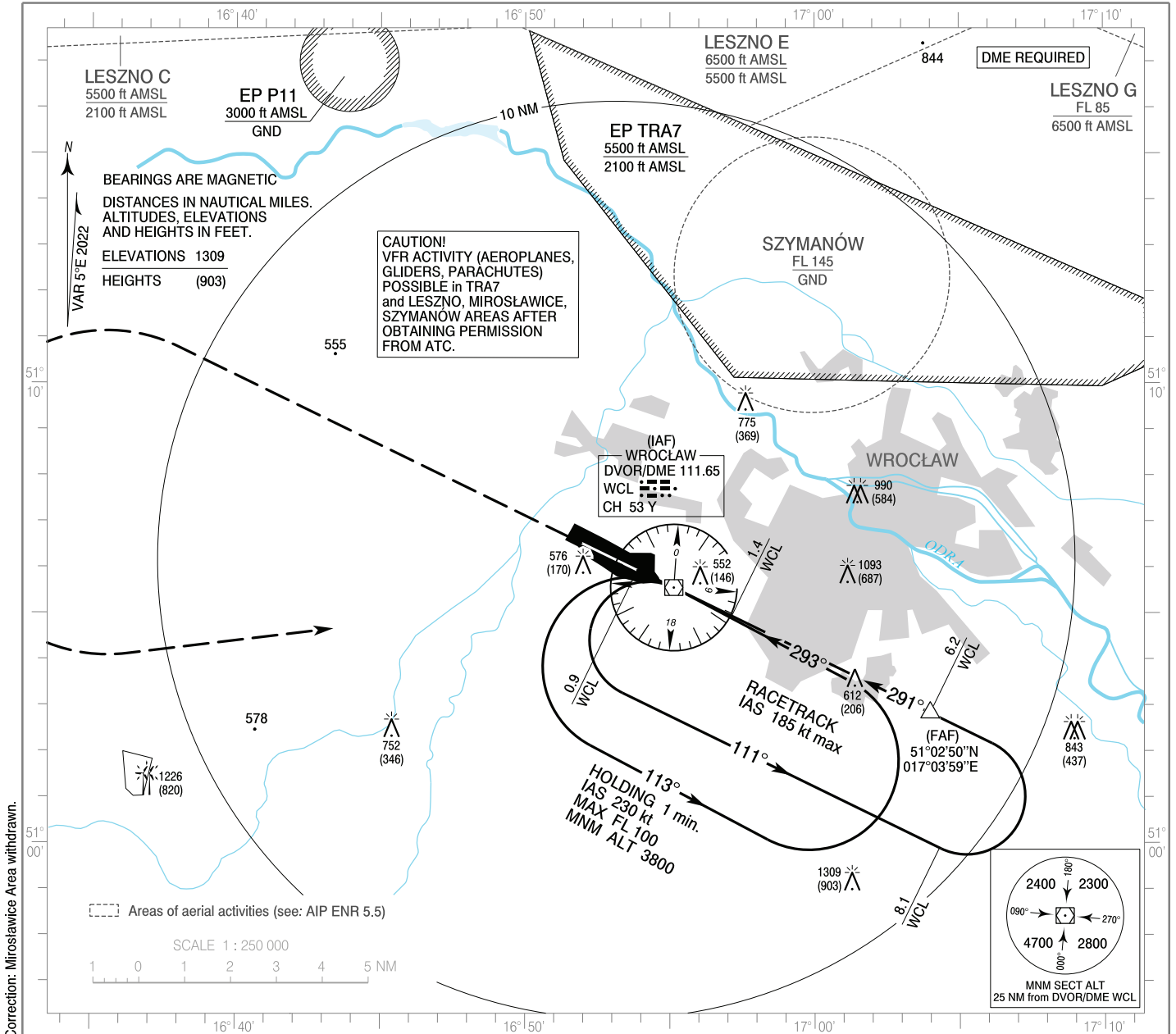


**INSTRUMENT
APPROACH
CHART - ICAO**

AERODROME ELEV 406 ft
THR RWY 29 ELEV 401 ft
HEIGHTS RELATED TO AD ELEV

Poznań APPROACH 123.040, 128.925
Wrocław TOWER 120.255
ATIS 124.330

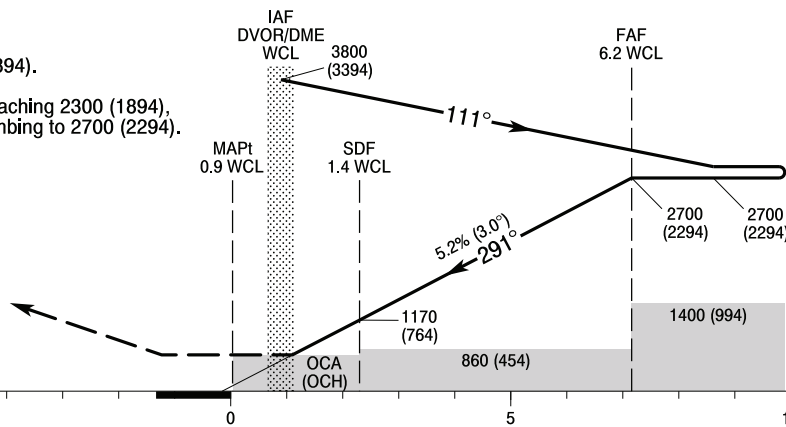
**Wrocław - Strachowice
VOR y
RWY 29 (CAT A/B/C/D)**



MISSED APPROACH

Climb straight ahead to 2300 (1894).
Further instructions from ATC.
If no instructions issued, after reaching 2300 (1894),
turn left to DVOR/DME WCL climbing to 2700 (2294).
Turn limited to 240 kt IAS max.

TRANSITION ALTITUDE 6500



SCALE 1 : 250 000

NM FROM THR RWY 29

Cat. of ACFT	OCA (OCH)				Distance FAF - MAPt 7.1 NM							
	A	B	C	D	Speed	kt	80	100	120	140	160	180
Straight - in	770 (364)	770 (364)	770 (364)	770 (364)	Time	min : s	5 : 18	4 : 15	3 : 32	3 : 02	2 : 39	2 : 22
	When stepdown fix not received				Rate of descent	ft / min	420	530	630	740	840	950
Circling*	880 (474)	900 (494)	1100 (694)	1500 (1094)	Final approach distance / altitude (height)							
	Distance	6	5	4	3	Altitude (height)	2650 (2244)	2330 (1924)	2010 (1604)	1690 (1284)		

**INSTRUMENT
APPROACH
CHART - ICAO**

Wrocław - Strachowice
VOR y
RWY 29 (CAT A/B/C/D)

FIX / POINT	LATITUDE	LONGITUDE	FIX FORMATION	
IAF DVOR/DME WCL	51°05'33.6"N	016°55'08.2"E		
FAF	51°02'50.3"N	017°03'59.0"E	115.97° GEO (111° MAG) DVOR WCL	6.21 NM DME WCL
SDF	51°04'57.8"N	016°57'05.1"E	115.97° GEO (111° MAG) DVOR WCL	1.37 NM DME WCL
MAPt	51°05'56.7"N	016°53'53.0"E	295.97° GEO (291° MAG) DVOR WCL	0.88 NM DME WCL
Final approach descent angle: 3.00°				