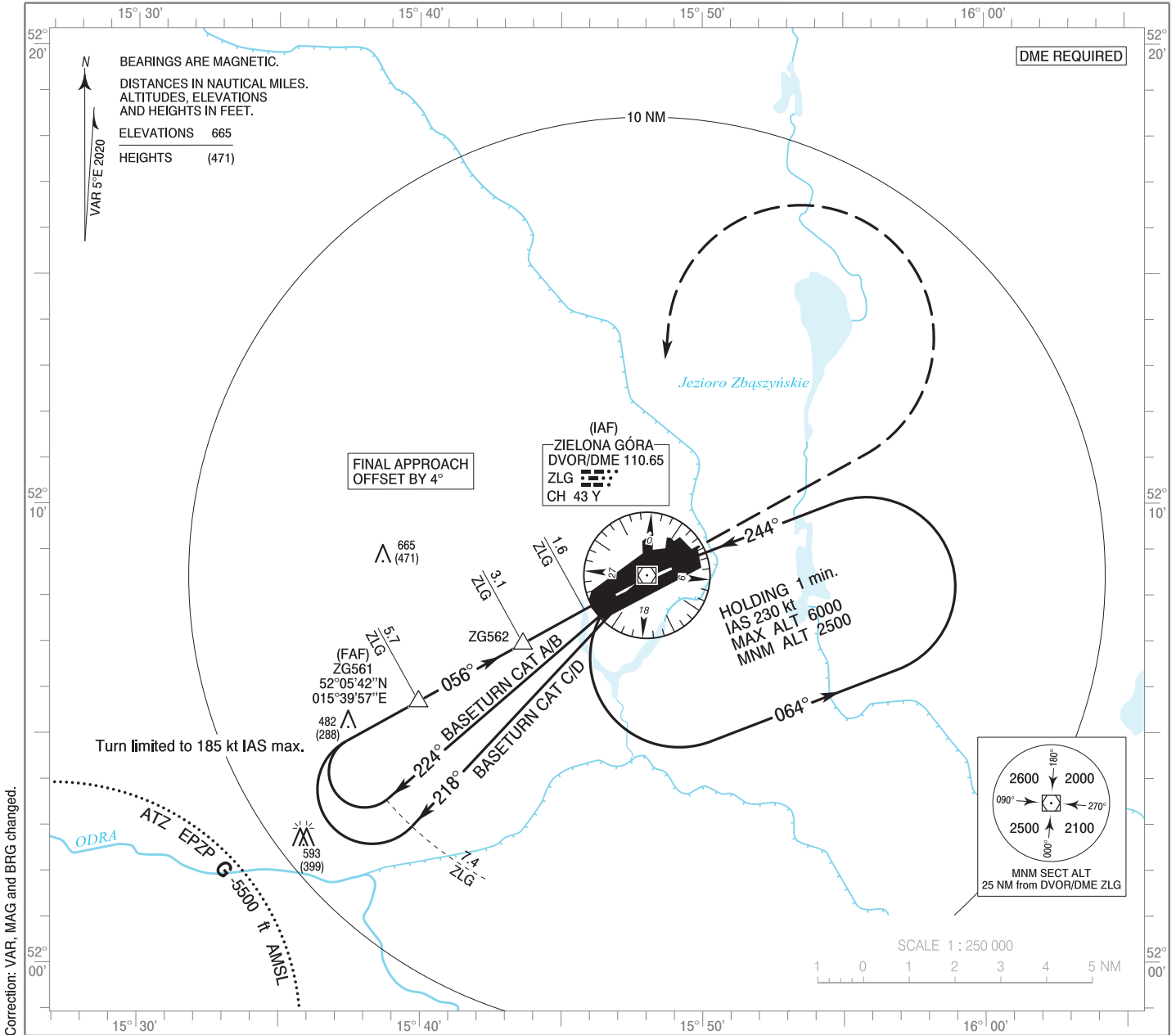


**INSTRUMENT  
APPROACH  
CHART - ICAO**

AERODROME ELEV 194 ft  
THR RWY 06 ELEV 194 ft  
HEIGHTS RELATED TO AD ELEV

Poznań APPROACH 128.925  
Zielona Góra TOWER 118.755  
FIS Poznań 126.300

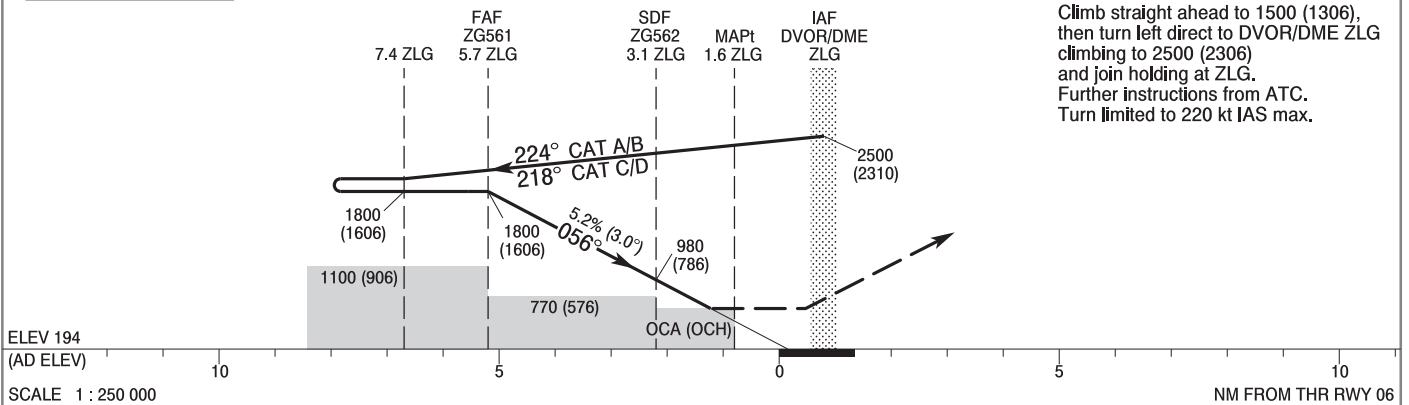
**Zielona Góra - Babimost  
VOR  
RWY 06 (CAT A/B/C/D)**



Correction: VAR, MAG and BRG changed.

TRANSITION ALTITUDE 6500

**MISSED APPROACH**  
Climb straight ahead to 1500 (1306), then turn left direct to DVOR/DME ZLG climbing to 2500 (2306) and join holding at ZLG. Further instructions from ATC. Turn limited to 220 kt IAS max.



ELEV 194  
(AD ELEV)

SCALE 1 : 250 000

NM FROM THR RWY 06

Cat. of ACFT	OCA (OCH)				Distance FAF - MAPt 4.1 NM							
	A	B	C	D	Speed	kt	80	100	120	140	160	180
Straight - in	640 (446)	640 (446)	640 (446)	640 (446)	Time	min : s	3 : 06	2 : 29	2 : 04	1 : 46	1 : 33	1 : 23
	When stepdown fix not received				Rate of descent	ft / min	430	540	640	750	850	960
Circling	680 (486)	750 (556)	960 (766)	1060 (866)	Final approach distance/altitude (height)							
	Distance	5	4	3	2	Altitude (height)	1580 (1386)	1260 (1066)	940 (746)	630 (436)		

**INSTRUMENT  
APPROACH  
CHART - ICAO**

**Zielona Góra - Babimost  
VOR  
RWY 06 (CAT A/B/C/D)**

FIX / POINT	LATITUDE	LONGITUDE	FIX FORMATION	
IAF DVOR/DME ZLG	52°08'27.3"N	015°48'02.5"E		
FAF ZG561	52°05'42.1"N	015°39'57.1"E	241.11° GEO (236° MAG) DVOR ZLG	5.70 NM DME ZLG
SDF ZG562	52°06'57.5"N	015°43'38.3"E	241.11° GEO (236° MAG) DVOR ZLG	3.10 NM DME ZLG
MAPt	52°07'41.9"N	015°45'48.8"E	241.11° GEO (236° MAG) DVOR ZLG	1.57 NM DME ZLG
Final approach descent angle: 3.00°				