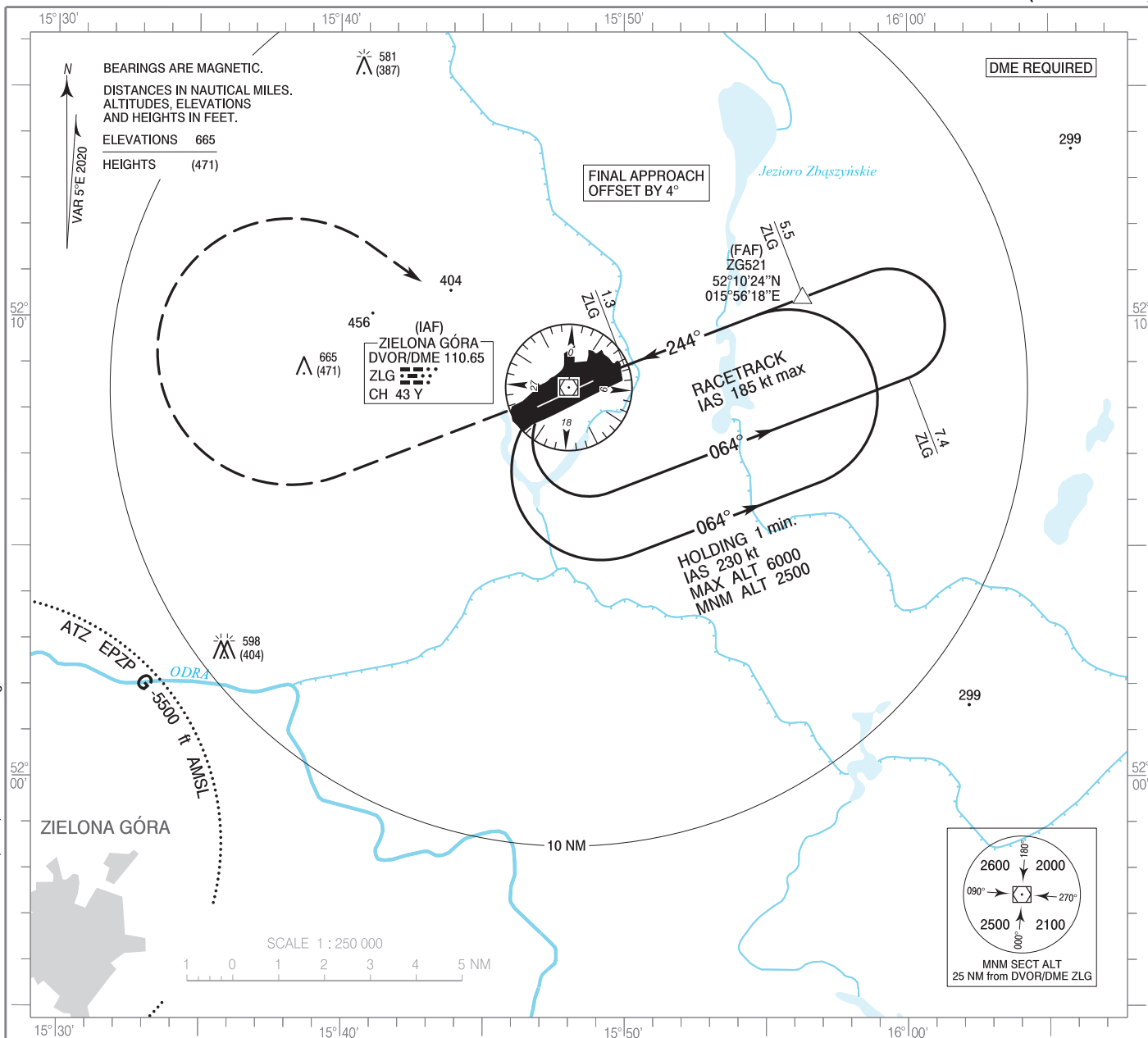


**INSTRUMENT
APPROACH
CHART - ICAO**

AERODROME ELEV 194 ft
THR RWY 24 ELEV 187 ft
HEIGHTS RELATED TO AD ELEV

Poznań APPROACH 128.925
Zielona Góra TOWER 118.755
FIS Poznań 126.300

**Zielona Góra - Babimost
VOR
RWY 24 (CAT A/B/C/D)**

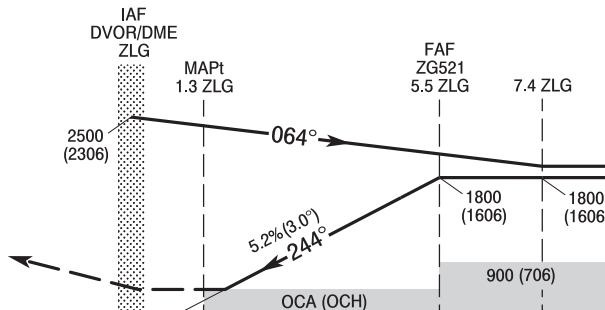


Correction: THR RWY 24 ELEV, VAR, MAG and BRG changed.

MISSED APPROACH

Climb straight ahead to 1500 (1306)
then turn right to DVOR/DME ZLG
climbing to 2500 (2306)
and join holding at ZLG.
Further instructions from ATC.
Turn limited to 220 kt IAS max.

TRANSITION ALTITUDE 6500



SCALE 1 : 250 000
10 5 0 5 10 NM FROM THR RWY 24
ELEV 194 (AD ELEV)

| OCA (OCH) | | | | | Distance FAF - MAPt 4.1 NM | | | | | | | |
|---|---------------|-----------|-----------|------------|----------------------------|-------------------|-------------|-------------|------------|-----------|--------|--------|
| Cat. of ACFT | A | B | C | D | Speed | kt | 80 | 100 | 120 | 140 | 160 | 180 |
| | Straight - in | 600 (406) | 600 (406) | 600 (406) | 600 (406) | Time | min : s | 3 : 07 | 2 : 29 | 2 : 04 | 1 : 47 | 1 : 33 |
| | | | | | Rate of descent | ft / min | 430 | 540 | 640 | 750 | 850 | 960 |
| Final approach distance / altitude (height) | | | | | | | | | | | | |
| Circling | 680 (486) | 750 (556) | 960 (766) | 1060 (866) | Distance | 5 | 4 | 3 | 2 | | | |
| | | | | | | Altitude (height) | 1660 (1466) | 1340 (1146) | 1020 (826) | 701 (507) | | |

**INSTRUMENT
APPROACH
CHART - ICAO**

**Zielona Góra - Babimost
VOR
RWY 24 (CAT A/B/C/D)**

| FIX / POINT | LATITUDE | LONGITUDE | FIX FORMATION | |
|-------------------------------------|--------------|---------------|---------------------------------------|--------------------|
| IAF DVOR/DME ZLG | 52°08'27.3"N | 015°48'02.5"E | | |
| FAF ZG521 | 52°10'24.4"N | 015°56'18.2"E | 068.94° GEO (064° MAG) DVOR ZLG | 5.45 NM DME ZLG |
| MAPt | 52°08'55.4"N | 015°50'00.8"E | 068.93° GEO (064° MAG) DVOR ZLG | 1.30 NM DME ZLG |
| Final approach descent angle: 3.00° | | | | |