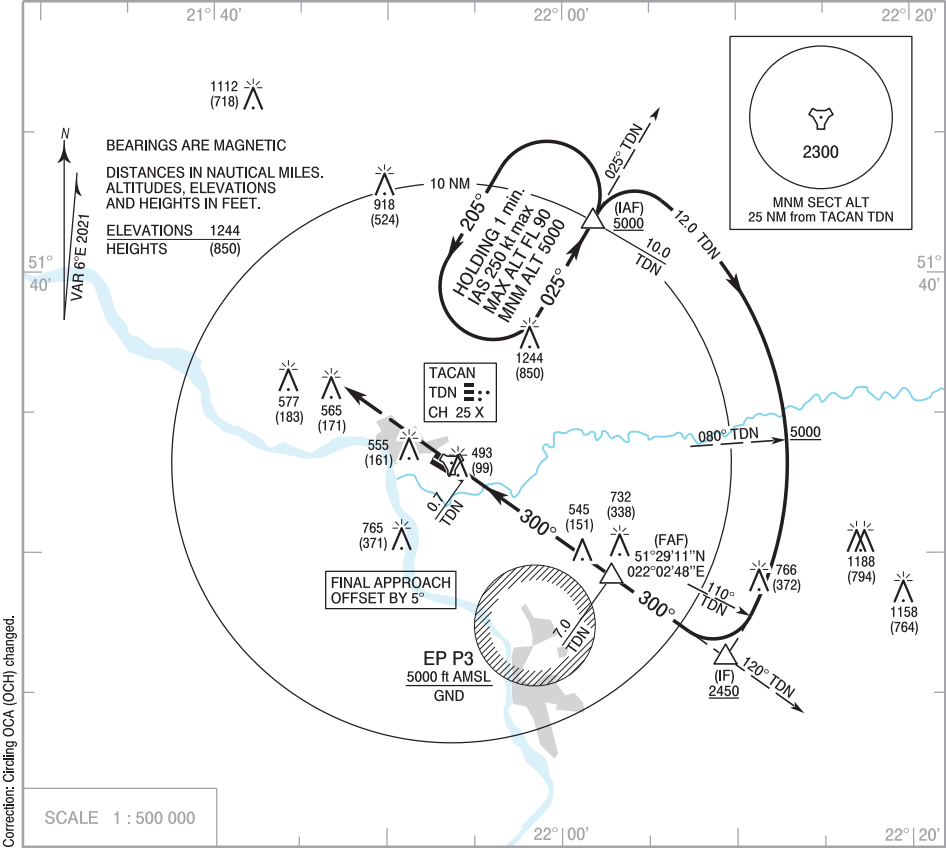


**INSTRUMENT
APPROACH
CHART - ICAO**

AERODROME ELEV 394 ft
THR RWY 30 ELEV 391 ft
HEIGHTS RELATED TO AD ELEV

Deblin APPROACH	128.250
Deblin GROUND	121.750
Deblin TOWER	122.750
ATIS	140.350

**DEBLIN
TACAN y
RWY 30 (CAT A/B/C/D/E)**

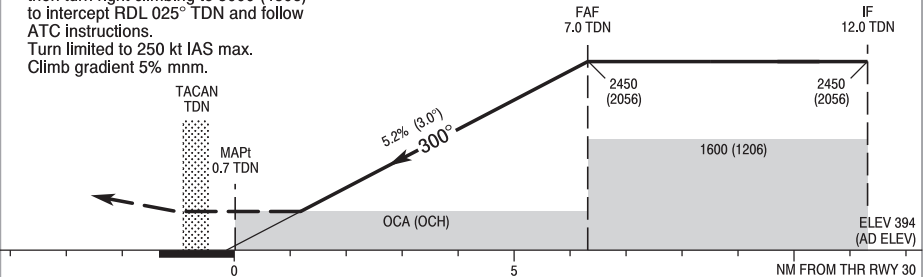


Correction: Circling OCA (OCH) changed.

MISSED APPROACH

Climb straight ahead to 3000 (2606)
then turn right climbing to 5000 (4606)
to intercept RDL 025° TDN and follow
ATC instructions.
Turn limited to 250 kt IAS max.
Climb gradient 5% mnm.

TRANSITION ALTITUDE 6500



OCA (OCH)						Distance FAF - MAPt 6.3 NM								
Cat. of ACFT	A	B	C	D	E	Speed	kt	70	100	135	170	200	230	
	814 (420)	814 (420)	814 (420)	814 (420)	814 (420)	Time	min : s	5 : 25	3 : 50	2 : 50	2 : 15	1 : 55	1 : 40	
Straight-in						Rate of descent	ft / min	370	530	710	890	1050	1210	
Circling	844 (450)	894 (500)	1184 (790)	1644 (1250)	1744 (1350)	Dist. to TDN		7.0	6.0	5.0	4.0	3.0	2.0	1.8
						Altitude		2450	2130	1810	1495	1180	865	814

INSTRUMENT
APPROACH
CHART - ICAO

RWY 30 (CAT A/B/C/D/E)

DEBLIN
TACAN y

FIX / POINT	LATITUDE	LONGITUDE	FIX FORMATION	
IAF	51°41'51.0"N	022°01'45.7"E	031.00° GEO (025° MAG) TACAN TDN	10.00 NM TACAN TDN
IF	51°26'16.5"N	022°09'18.5"E	126.00° GEO (120° MAG) TACAN TDN	12.00 NM TACAN TDN
FAF	51°29'11.0"N	022°02'48.0"E	126.00° GEO (120° MAG) TACAN TDN	7.00 NM TACAN TDN
MAPt	51°32'50.1"N	021°54'33.2"E	126.00° GEO (120° MAG) TACAN TDN	0.68 NM TACAN TDN
Final approach descent angle: 3.00°				