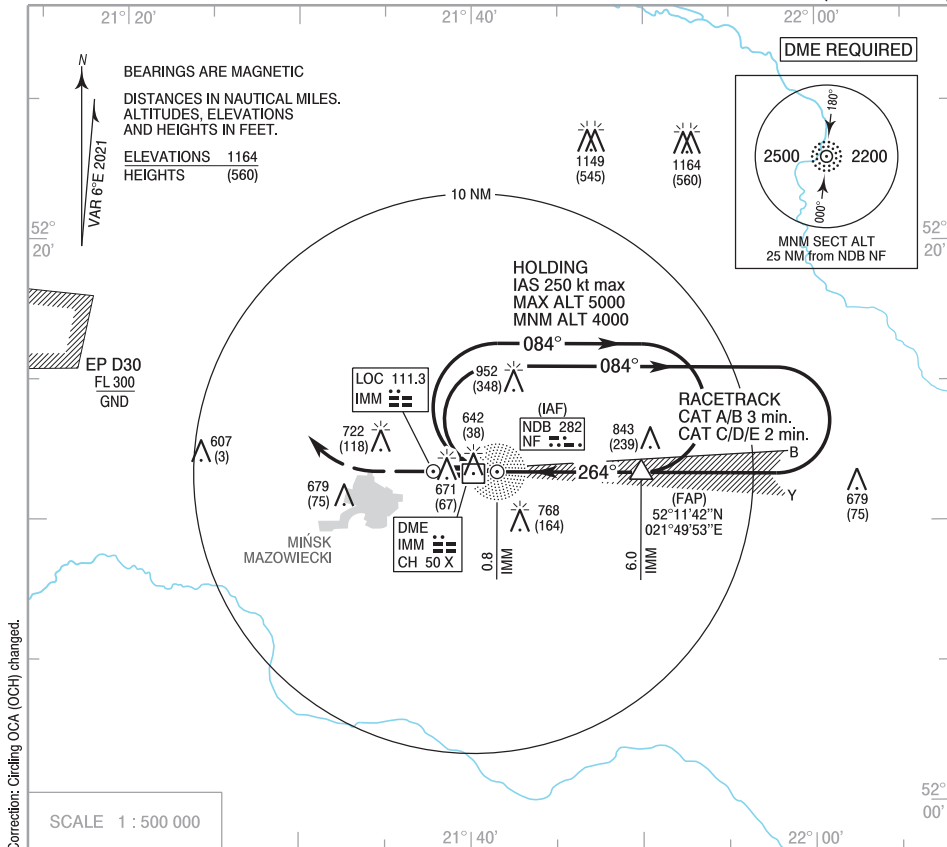


AERODROME ELEV 604 ft
THR RWY 26 ELEV 604 ft
HEIGHTS RELATED TO THR RWY 26

Minsk APPROACH	120.775,	278.575
Minsk TOWER	135.425,	279.075
ATIS	138.250	

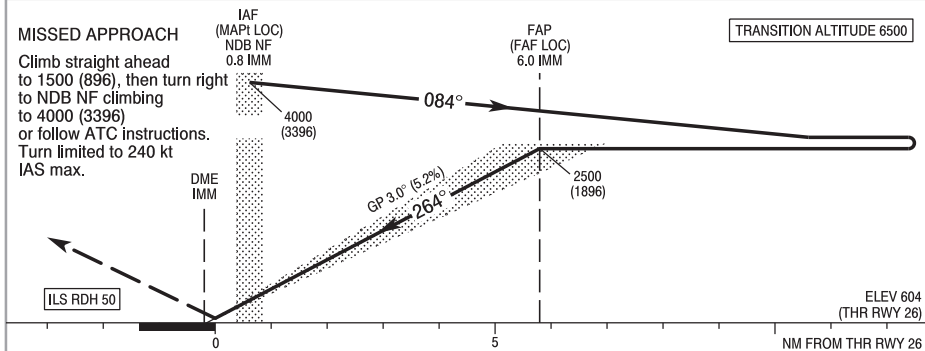
MIŃSK MAZOWIECKI
ILS z or LOC z
RWY 26 (CAT A/B/C/D/E)



Correction: Circling OCA (OCH) changed.

Climb straight ahead
to 1500 (896), then turn right
to NDB NF climbing
to 4000 (3396)
or follow ATC instructions.
Turn limited to 240 kt
IAS max.

TRANSITION ALTITUDE 6500



OCA (OCH)							Distance FAF - MAPT 5.2 NM							
Cat. of ACFT		A	B	C	D	E	Speed	kt	70	100	135	170	200	230
	Cat. I	854 (250)	854 (250)	854 (250)	854 (250)	854 (250)	Time	min : s	4 : 30	3 : 10	2 : 20	1 : 50	1 : 35	1 : 20
Straight-in	LOC	1114 (510)	1114 (510)	1114 (510)	1114 (510)	1114 (510)	Rate of descent	ft / min	370	530	710	890	1050	1210
Circling (OCH AAL)		1114 (510)	1114 (510)	1354 (750)	1354 (750)	1454 (850)	Dist. to IMM		6.0	5.0	4.0	3.0	2.0	1.8
							Altitude		2500	2180	1865	1550	1235	1114

**INSTRUMENT
APPROACH
CHART - ICAO**

MIŃSK MAZOWIECKI
ILS z or LOC z
RWY 26 (CAT A/B/C/D/E)

FIX / POINT	LATITUDE	LONGITUDE	FIX FORMATION	
IAF NDB NF	52°11'43.5"N	021°41'30.6"E		
FAP (FAF LOC)	52°11'41.6"N	021°49'53.0"E	270.42° GEO (264° MAG) LOC IMM	6.00 NM DME IMM
MAPt (LOC)	52°11'43.5"N	021°41'30.6"E	270.31° GEO (264° MAG) LOC IMM	0.84 NM DME IMM
Final approach descent angle: 3.00°				