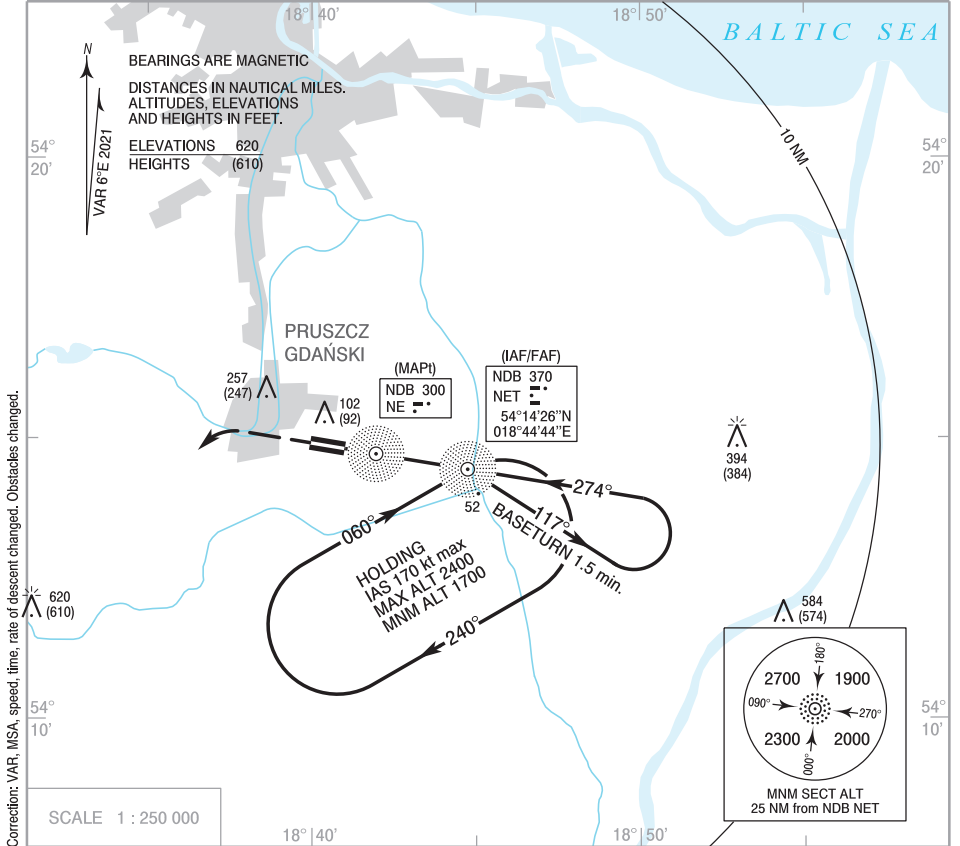


**INSTRUMENT
APPROACH
CHART - ICAO**

AERODROME ELEV 17 ft
THR RWY 27 ELEV 10 ft
HEIGHTS RELATED TO THR RWY 27

**PRUSZCZ GDAŃSKI
NDB z
RWY 27 (CAT A)**

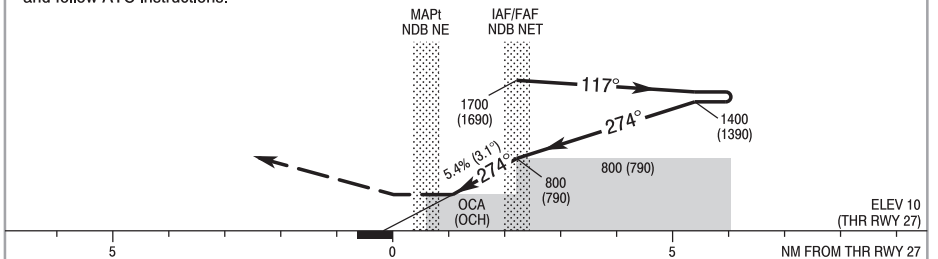
Pruszcz TOWER 126.500



MISSED APPROACH

Climb straight ahead to 1000 (990) then
turn left to NDB NET climbing to 1700 (1690)
and follow ATC instructions.

TRANSITION ALTITUDE 6500



		OCA (OCH)		Distance FAF - MAPt 1.7 NM				
Cat. of ACFT	A			60	70	80	90	100
	400 (390)			1:40	1:30	1:15	1:10	1:00
Straight-in				330	380	440	490	550
Circling (OCH AAL)*	597 (580)							

*Circling south of the aerodrome only

**INSTRUMENT
APPROACH
CHART - ICAO**

**PRUSZCZ GDAŃSKI
NDB z
RWY 27 (CAT A)**

FIX / POINT	LATITUDE	LONGITUDE	FIX FORMATION	
IAF NDB NET	54°14'26.3"N	018°44'44.4"E		
FAF NDB NET	54°14'26.3"N	018°44'44.4"E		
MAPt NDB NE	54°14'42.5"N	018°42'00.8"E		
Final approach descent angle: 3.10°				