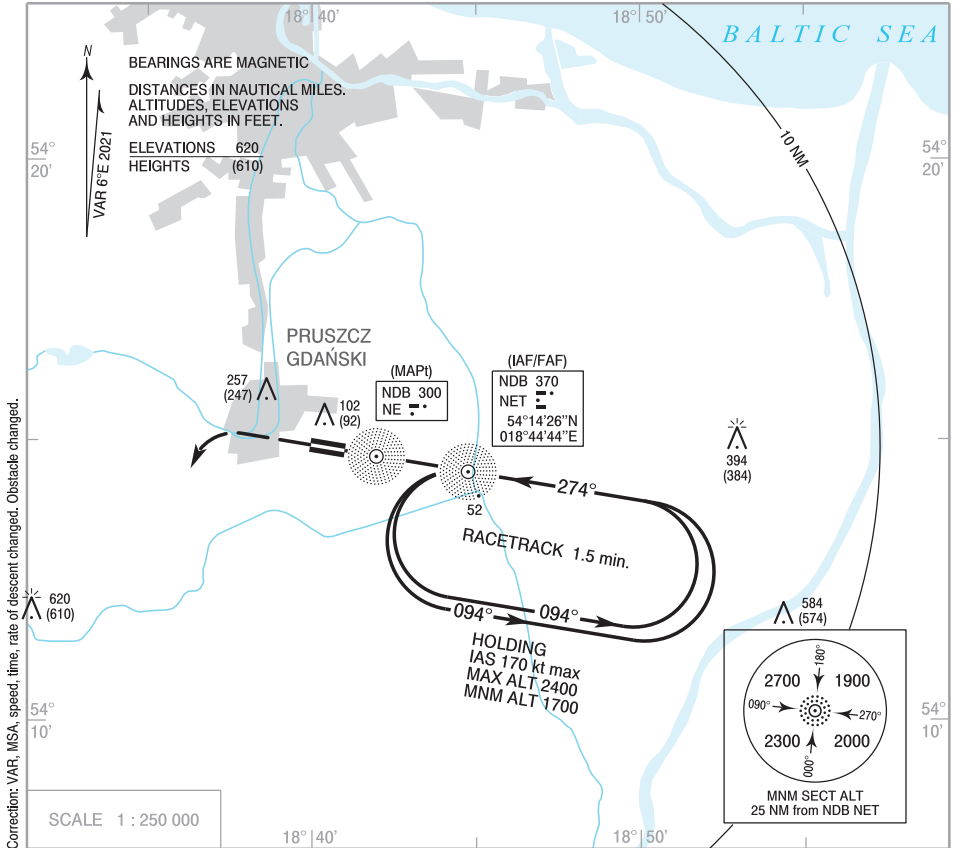


**INSTRUMENT
APPROACH
CHART - ICAO**

AERODROME ELEV 17 ft
THR RWY 27 ELEV 10 ft
HEIGHTS RELATED TO THR RWY 27

**PRUSZCZ GDAŃSKI
NDB y
RWY 27 (CAT A)**

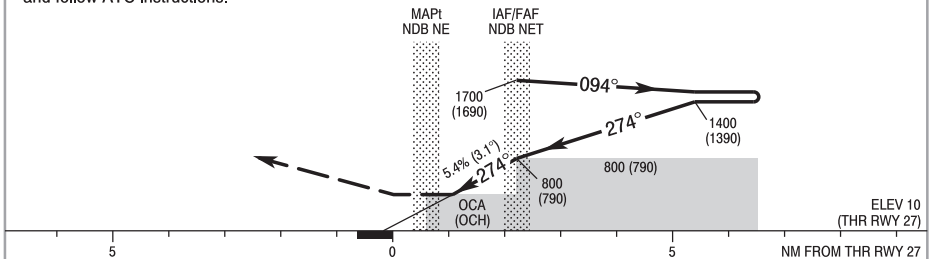
Pruszcz TOWER 126.500



MISSED APPROACH

Climb straight ahead to 1000 (990) then
turn left to NDB NET climbing to 1700 (1690)
and follow ATC instructions.

TRANSITION ALTITUDE 6500



| | | OCA (OCH) | | | | Distance FAF - MAPt 1.7 NM | | | | | | |
|---------------------|---|-----------|--|--|--|----------------------------|----------|--------|--------|--------|--------|--------|
| Cat. of ACFT | A | | | | | Speed | kt | 60 | 70 | 80 | 90 | 100 |
| | | | | | | Time | min : s | 1 : 40 | 1 : 30 | 1 : 15 | 1 : 10 | 1 : 00 |
| Straight-in | | | | | | Rate of descent | ft / min | 330 | 380 | 440 | 490 | 550 |
| | | | | | | | | | | | | |
| Circling (OCH AAL)* | | 597 (580) | | | | | | | | | | |

*Circling south of the aerodrome only

**INSTRUMENT
APPROACH
CHART - ICAO**

**PRUSZCZ GDAŃSKI
NDB y
RWY 27 (CAT A)**

| FIX / POINT | LATITUDE | LONGITUDE | FIX FORMATION | |
|-------------------------------------|--------------|---------------|---------------|--|
| IAF NDB NET | 54°14'26.3"N | 018°44'44.4"E | | |
| FAF NDB NET | 54°14'26.3"N | 018°44'44.4"E | | |
| MAPt NDB NE | 54°14'42.5"N | 018°42'00.8"E | | |
| Final approach descent angle: 3.10° | | | | |